

PUBLIC HEARING FOR INITIAL STUDY/MITIGATED NEGATIVE DECLARATION



PROJECT APPROVAL & ENVIRONMENTAL DOCUMENT (PA&ED) PHASE

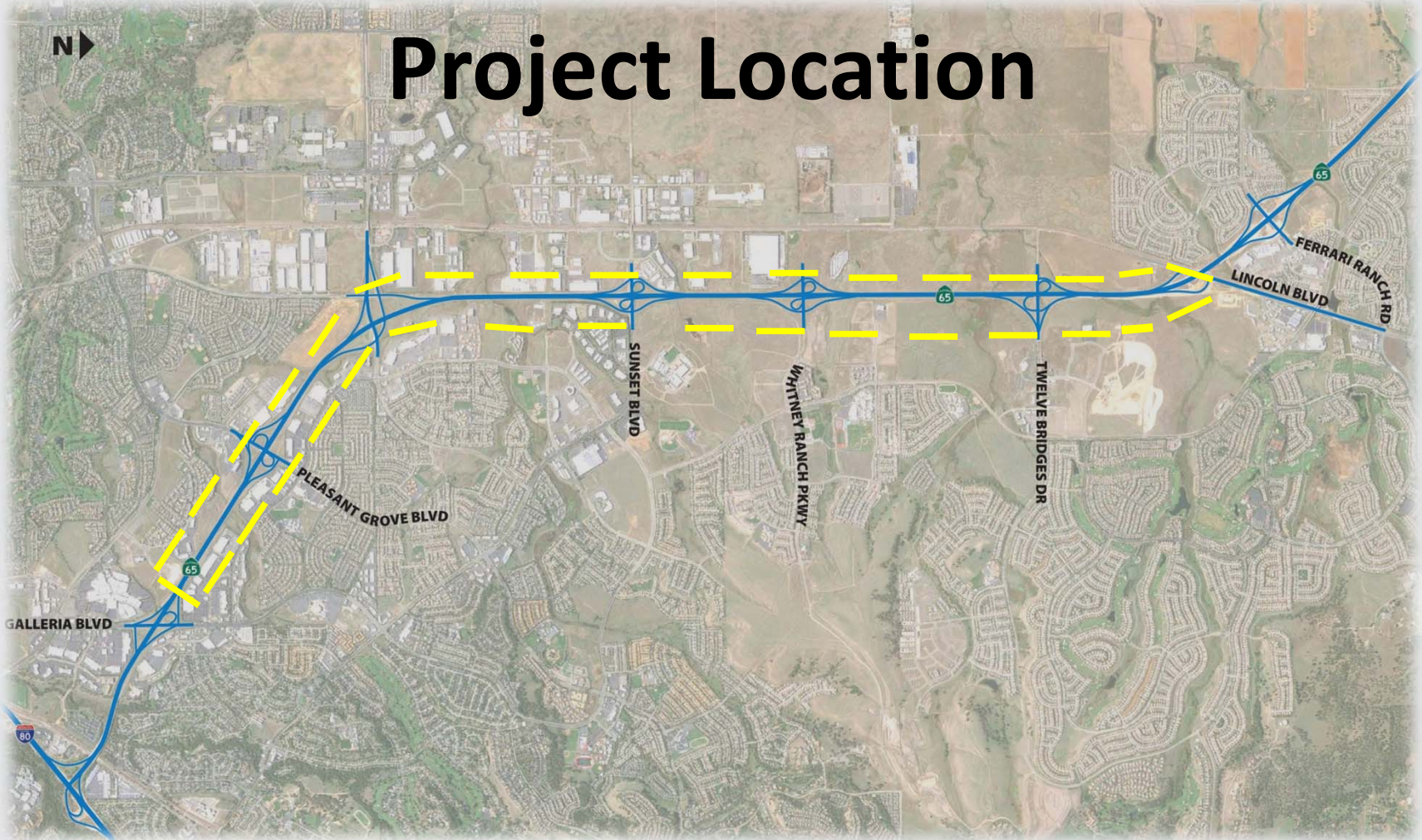


PLACER COUNTY
TRANSPORTATION
PLANNING AGENCY

May 24, 2017



Project Location



Goals and Objectives

- Increase Mobility
- Alleviate Congestion
- Improve Safety
- Economic Development



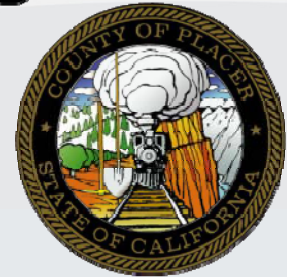
PLACER COUNTY
TRANSPORTATION
PLANNING AGENCY



ROCKLIN
CALIFORNIA



Caltrans®



65

Widening

Existing (2014) Morning Traffic Congestion

Looking North from Pleasant Grove Boulevard Overcrossing



Existing (2017) Morning Traffic Congestion

Looking South from Sunset Boulevard Overcrossing





Existing Evening Traffic Congestion

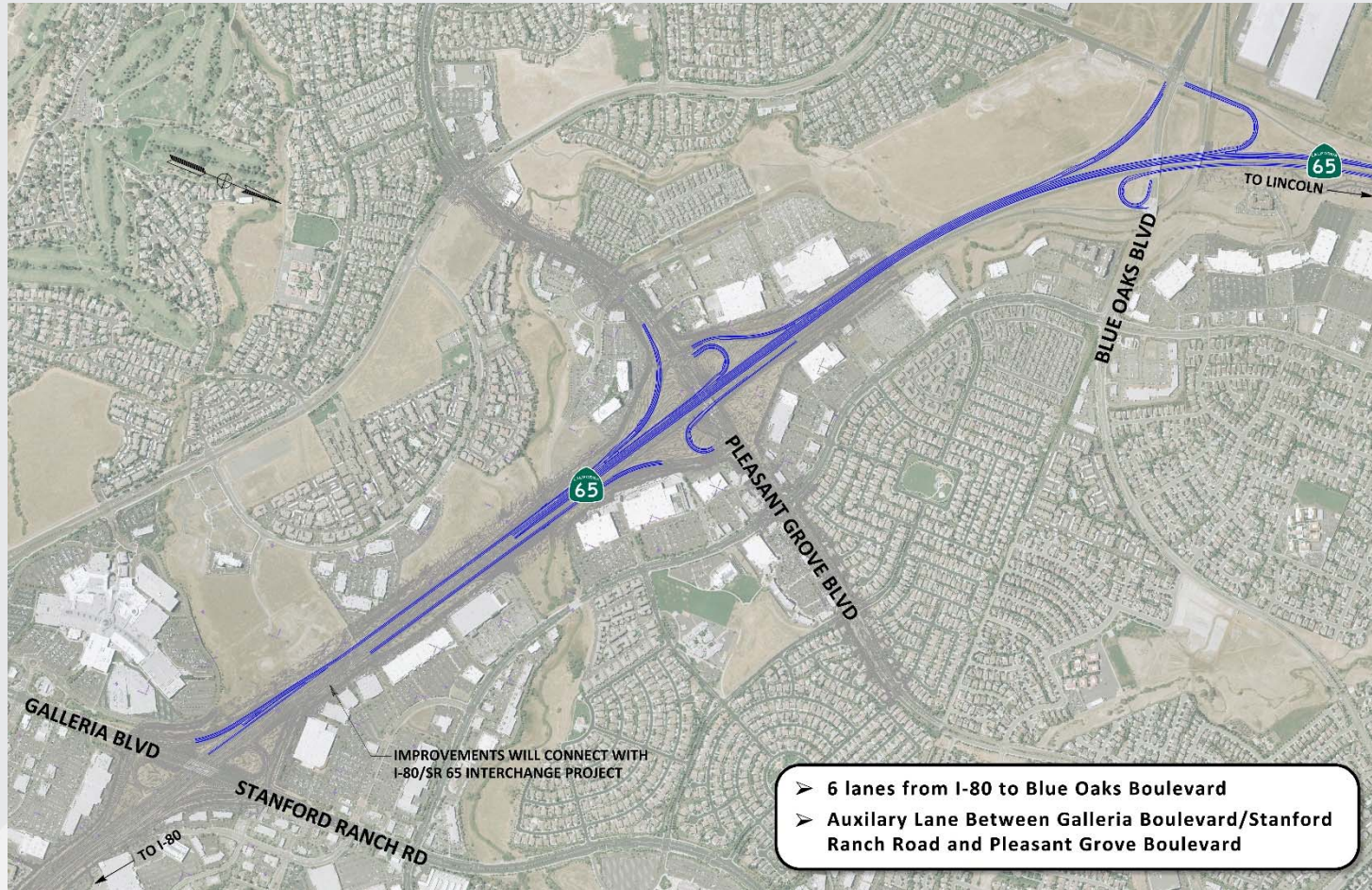
Looking South from Galleria Boulevard/Stanford Ranch Road Overcrossing

Public Outreach

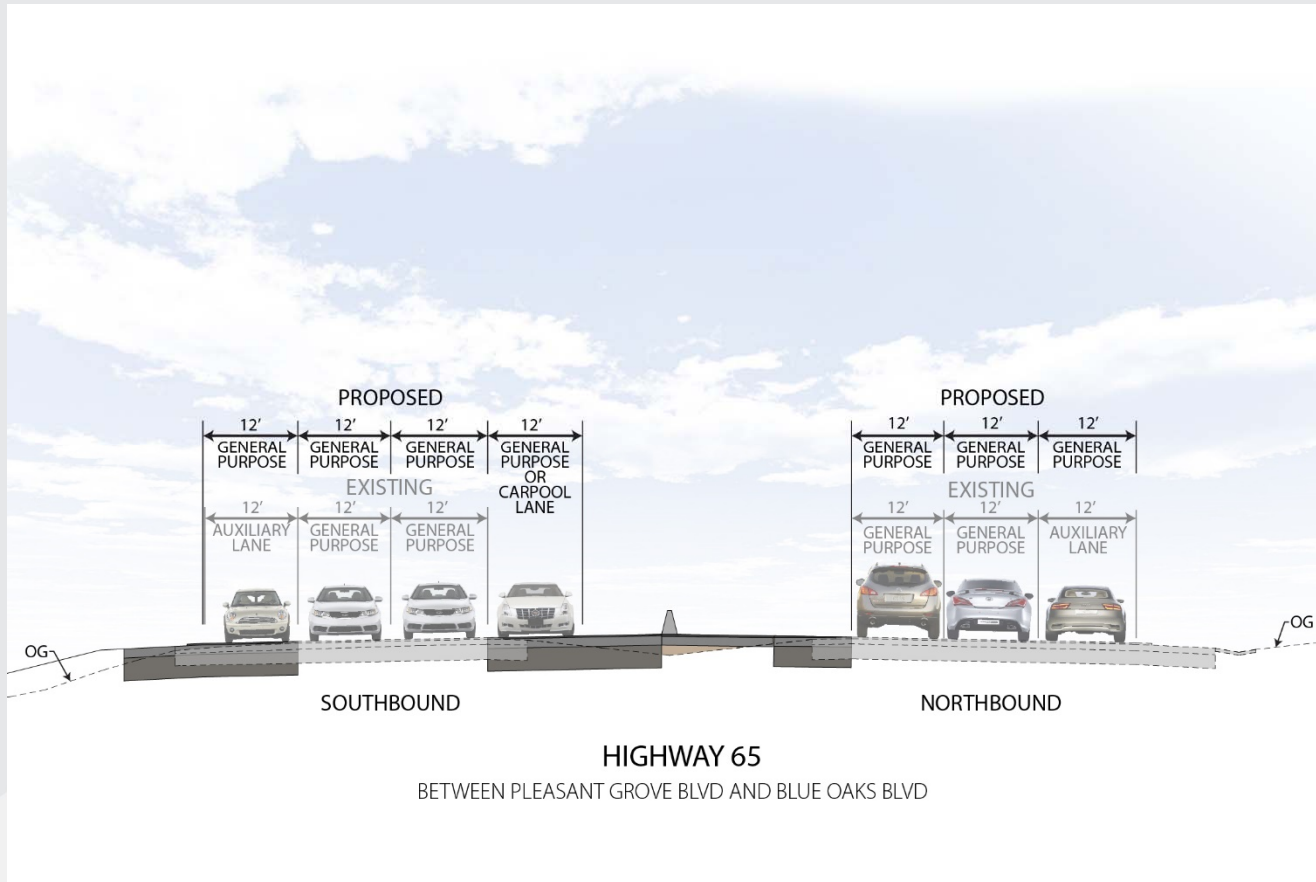
- ✓ Community Meeting in City of Lincoln – July 2014
- ✓ Six Town Hall Meetings – November 2015
- ✓ Project Update in City of Roseville – November 2016
- ✓ Project Website
- ✓ Newsletters and Social Media



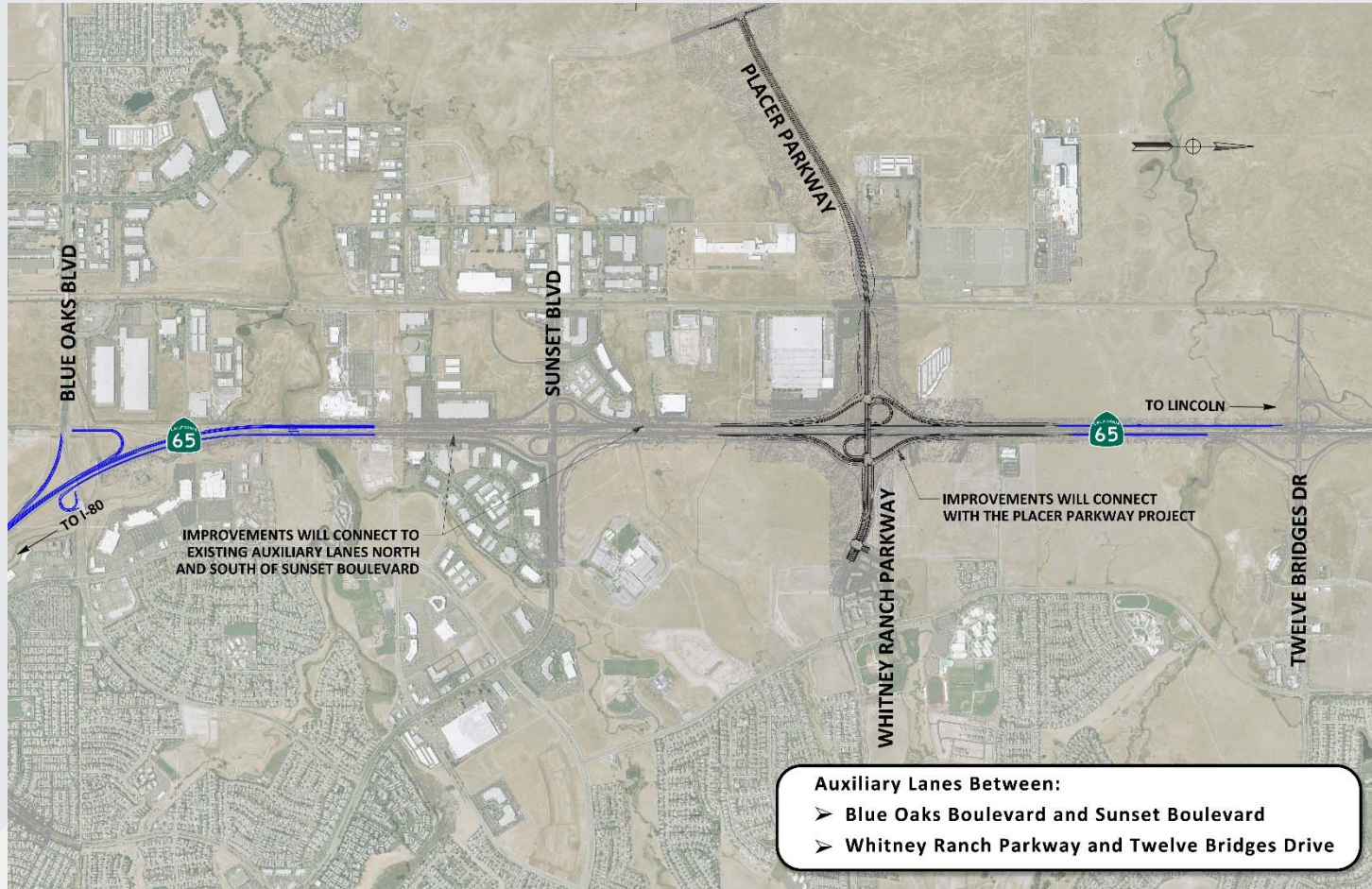
Proposed Improvements



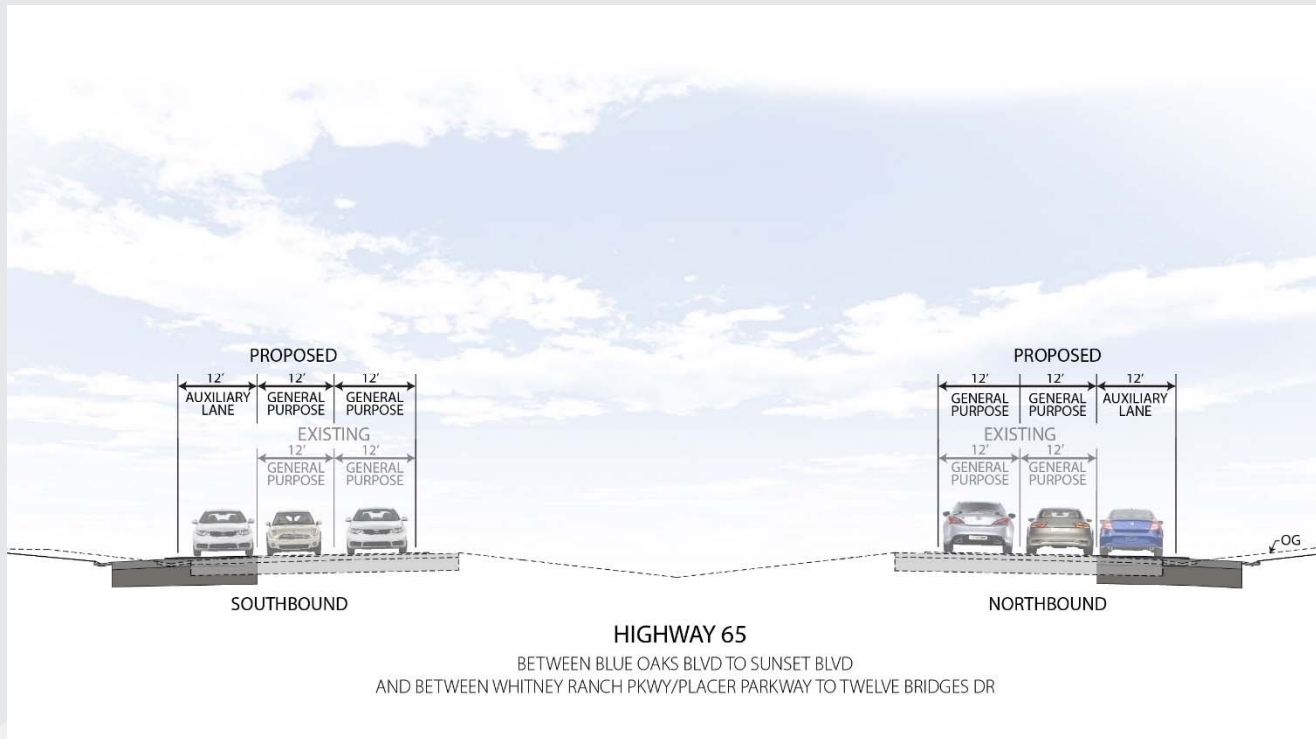
Proposed Improvements



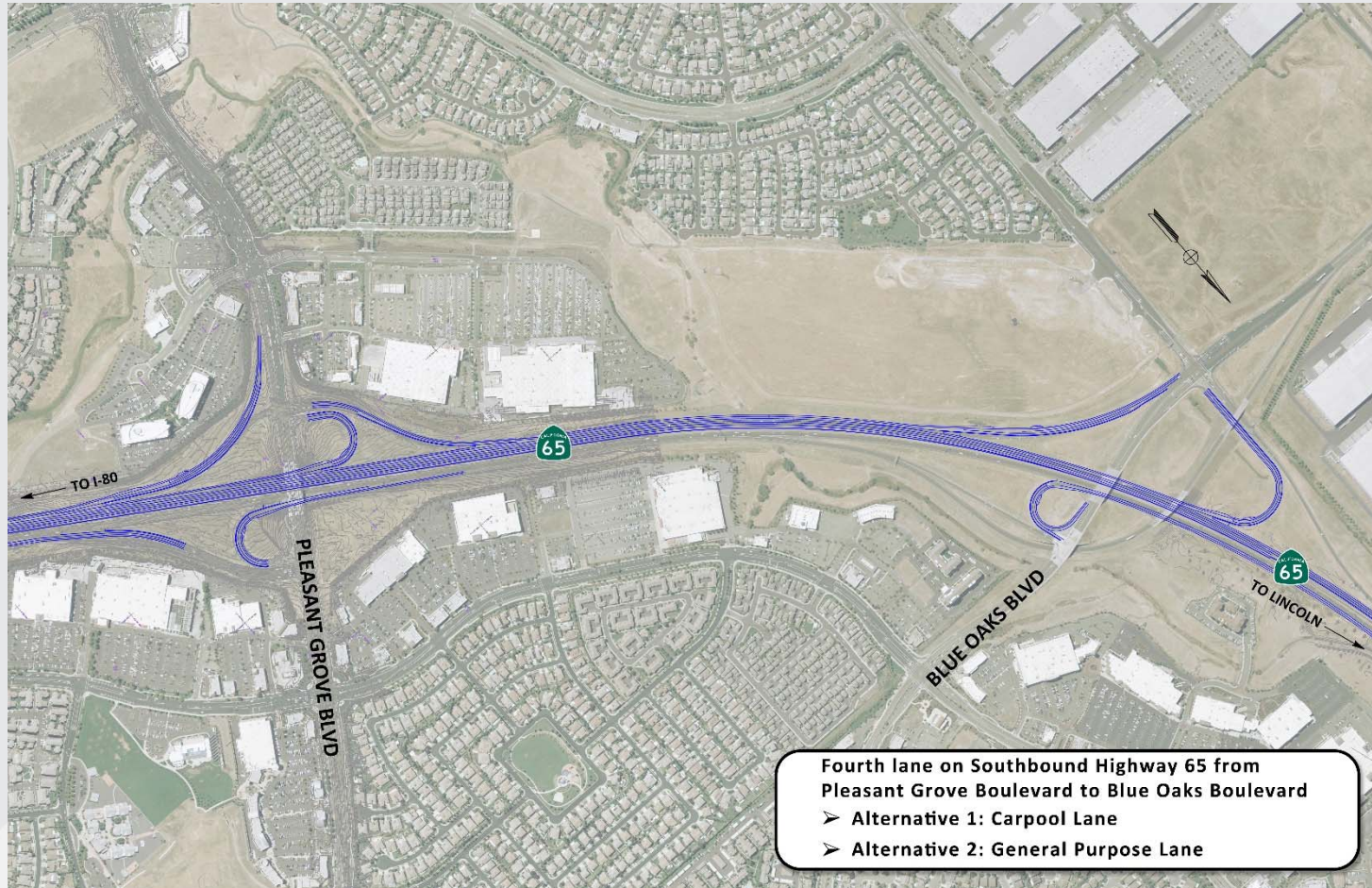
Proposed Improvements



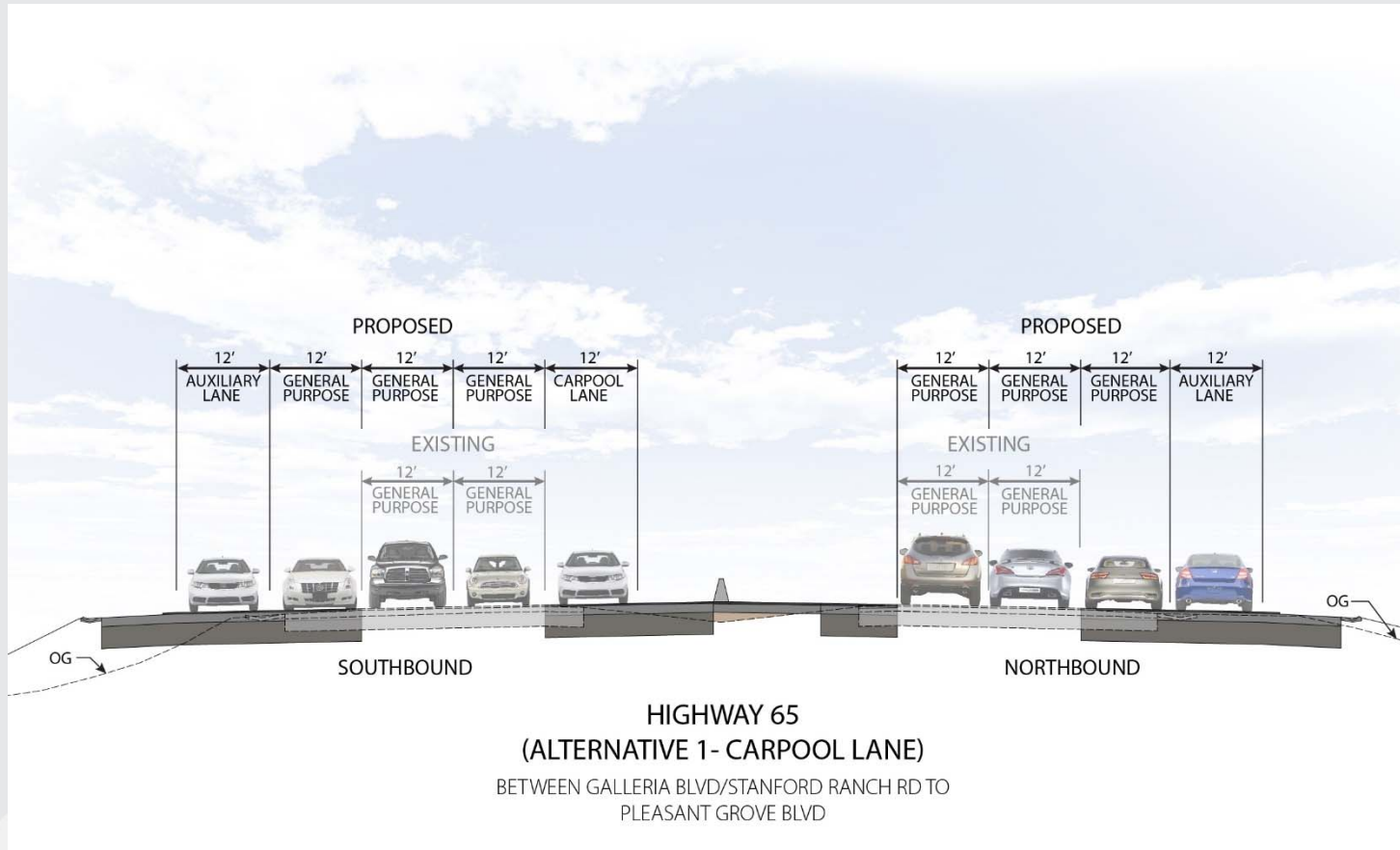
Proposed Improvements



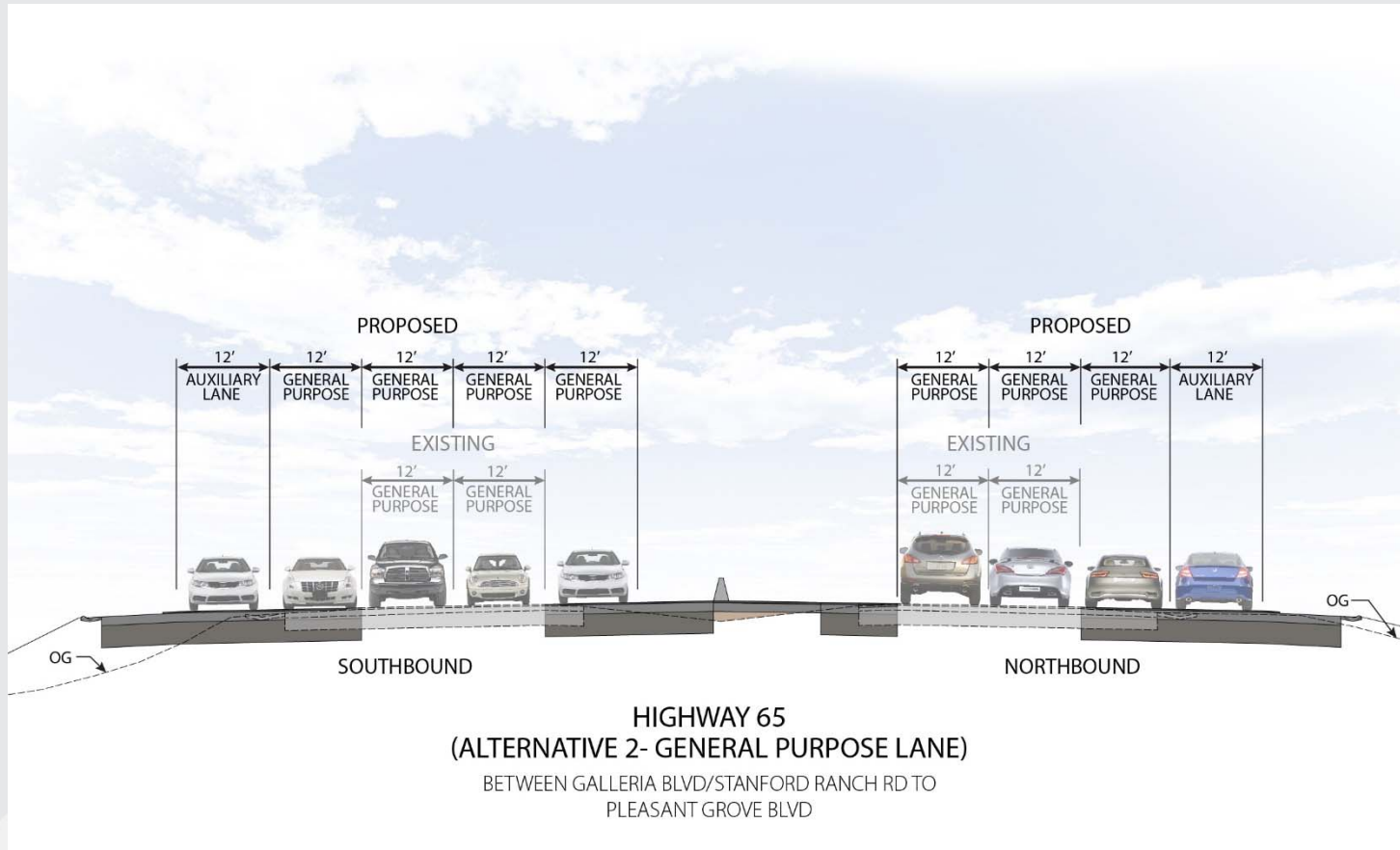
Project Alternatives



Project Alternatives



Project Alternatives





65

Widening

Phase 1

Draft Environmental Document

- Released on May 12, 2017
- 30-day review period
- Comments due by Wednesday, June 14, 2017 at 5 pm



Draft Environmental Document

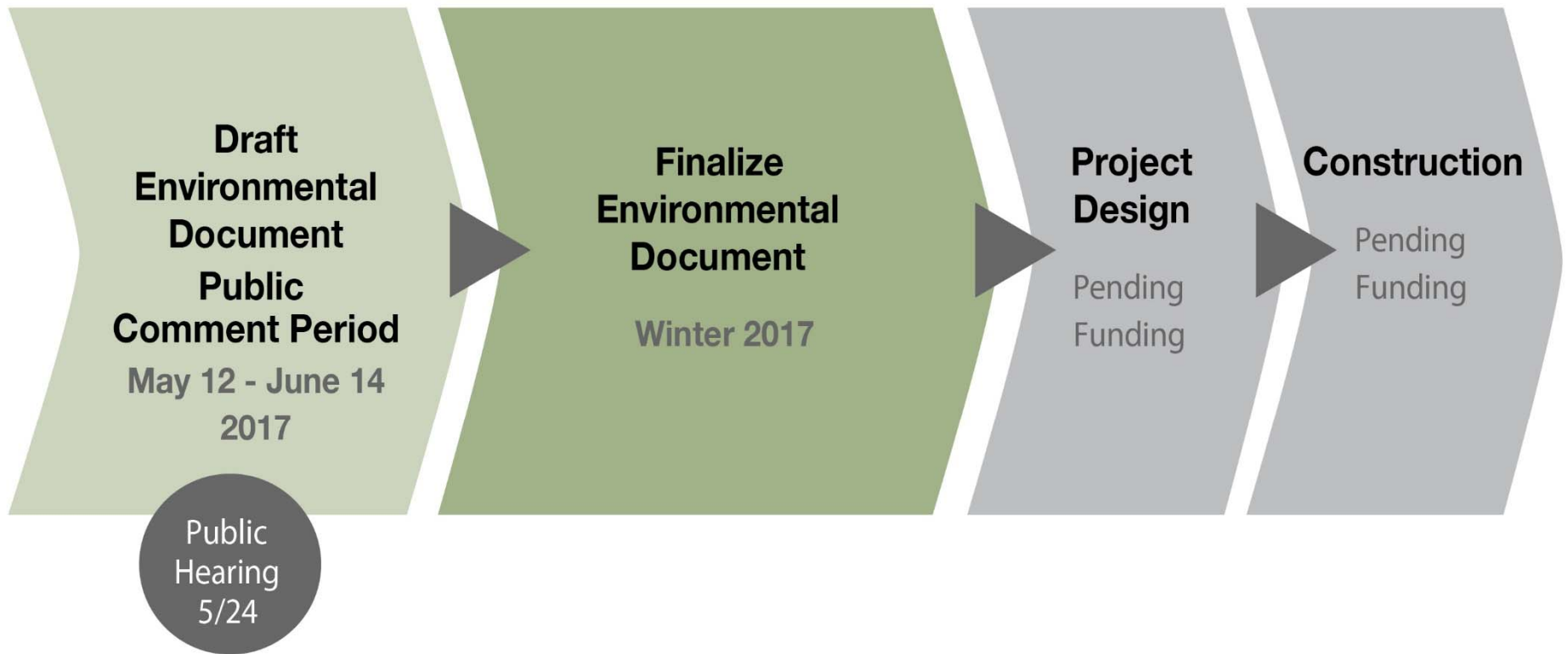
- Initial Study/Mitigated Negative Declaration
 - Aesthetics
 - Air Quality
 - Biological Resources
 - Cultural Resources
 - Climate Change
 - Hazardous Materials
 - Water Quality
 - Noise
 - Traffic





Project Schedule

■ Current ■ Upcoming ■ On-hold until funded



Draft Environmental Document

- Submitting Comments
 - Mail
 - Thaleena Bhattal, Caltrans District 3
 - 703 B Street
 - Marysville, CA 95901
 - Email
 - Thaleena.Bhattal@dot.ca.gov
 - Public Hearing
- Submit Comments by Wednesday, June 14, 2017 at 5 pm
- Project Website:
 - www.pctpa.net/projects/sr65widening

