



PLACER-SACRAMENTO MOBILITY ACTION PLAN

Item H – May 26, 2021

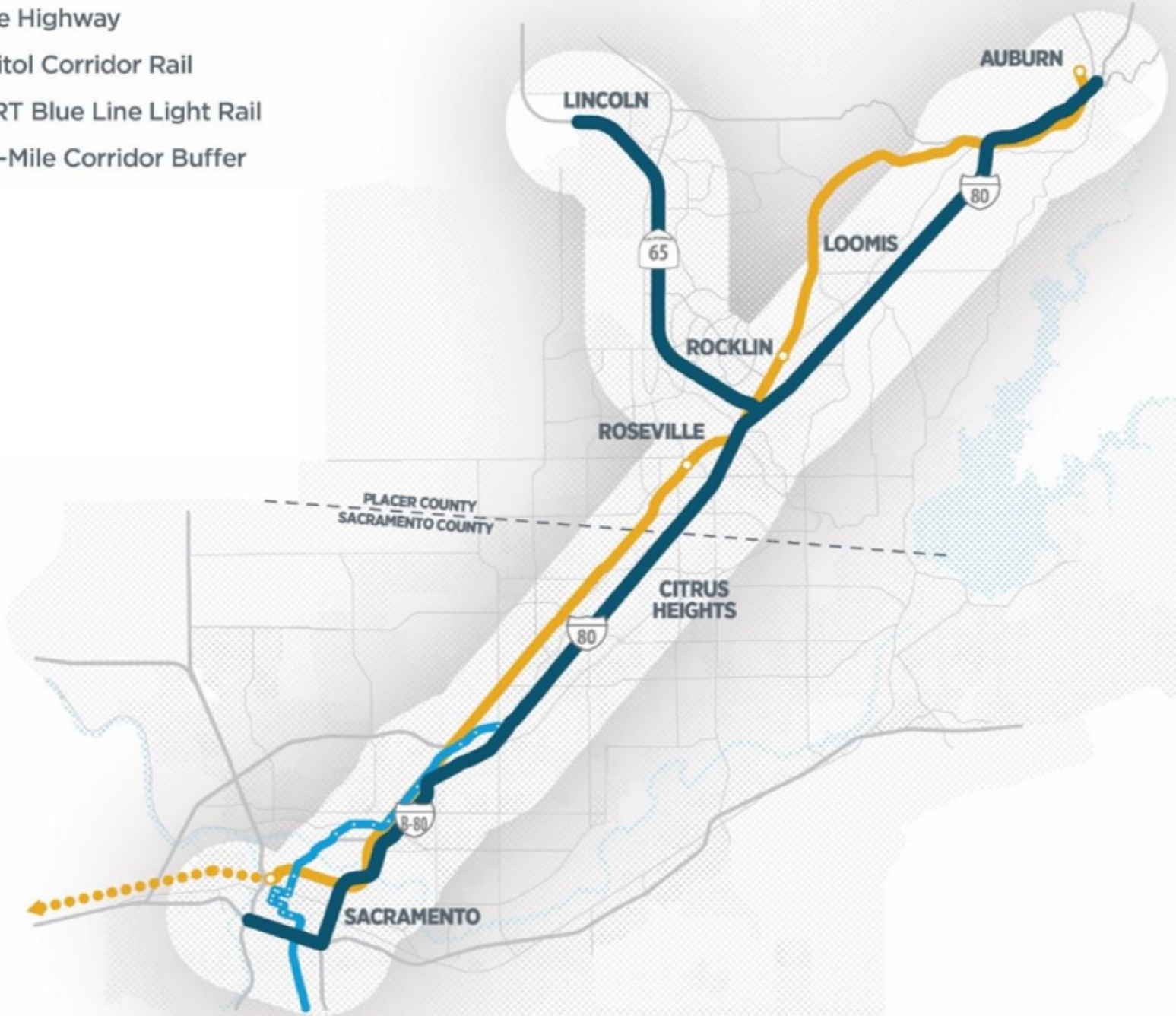
Gateway Study

Project Screening

Tier 1 Projects

Next Steps

- State Highway
- Capitol Corridor Rail
- SacRT Blue Line Light Rail
- Two-Mile Corridor Buffer



Gateway Study

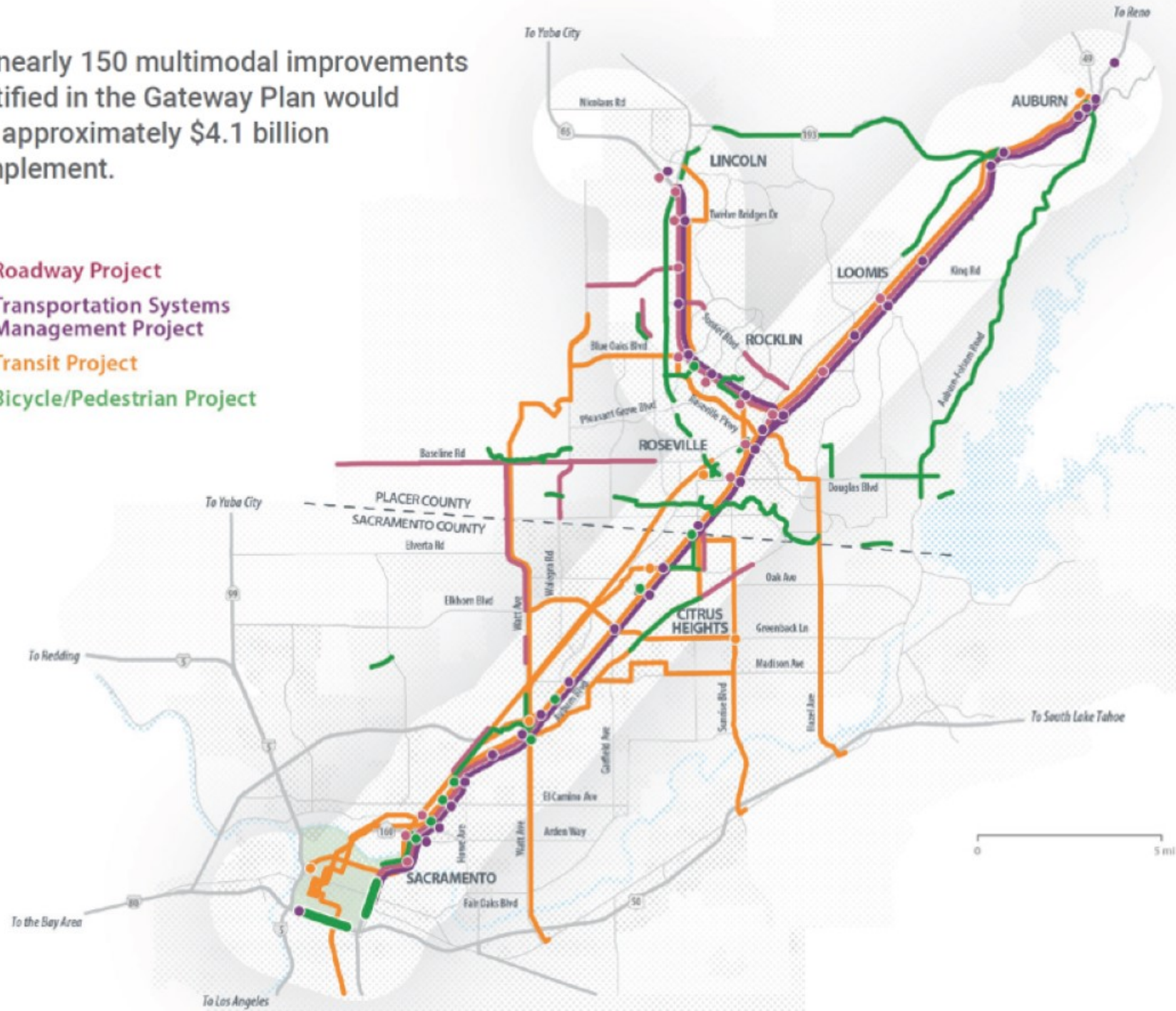
Project Screening

Tier 1 Projects

Next Steps

▶ The nearly 150 multimodal improvements identified in the Gateway Plan would cost approximately \$4.1 billion to implement.

- Roadway Project
- Transportation Systems Management Project
- Transit Project
- Bicycle/Pedestrian Project

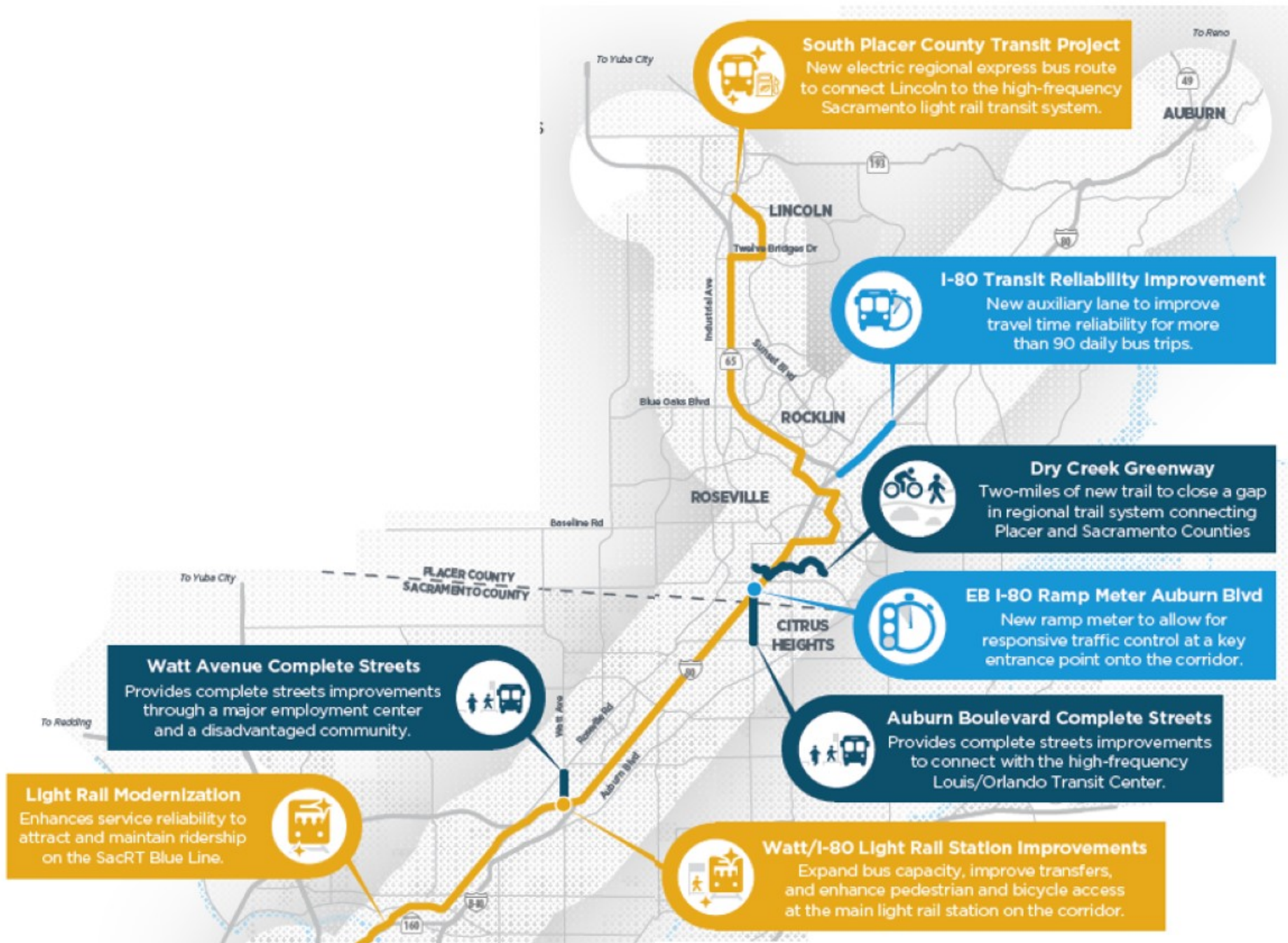


Gateway Study

Project Screening

Tier 1 Projects

Next Steps



Gateway Study

Project Screening

Tier 1 Projects

Next Steps

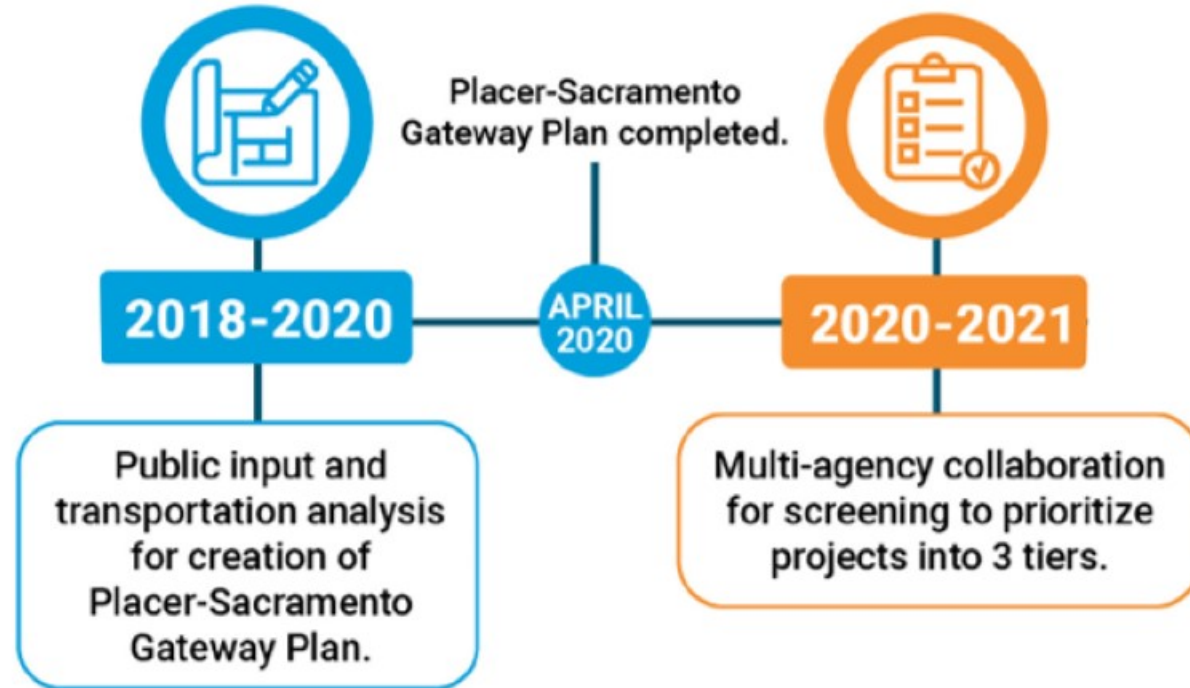


Gateway
Study

Project
Screening

Tier 1
Projects

Next
Steps



Gateway
Study

Project
Screening

Tier 1
Projects

Next
Steps

PROJECT DEVELOPMENT TEAM

STRATEGY TEAM



Placer County
Transportation
Planning Agency



Gateway
Study

**Project
Screening**

Tier 1
Projects

Next
Steps

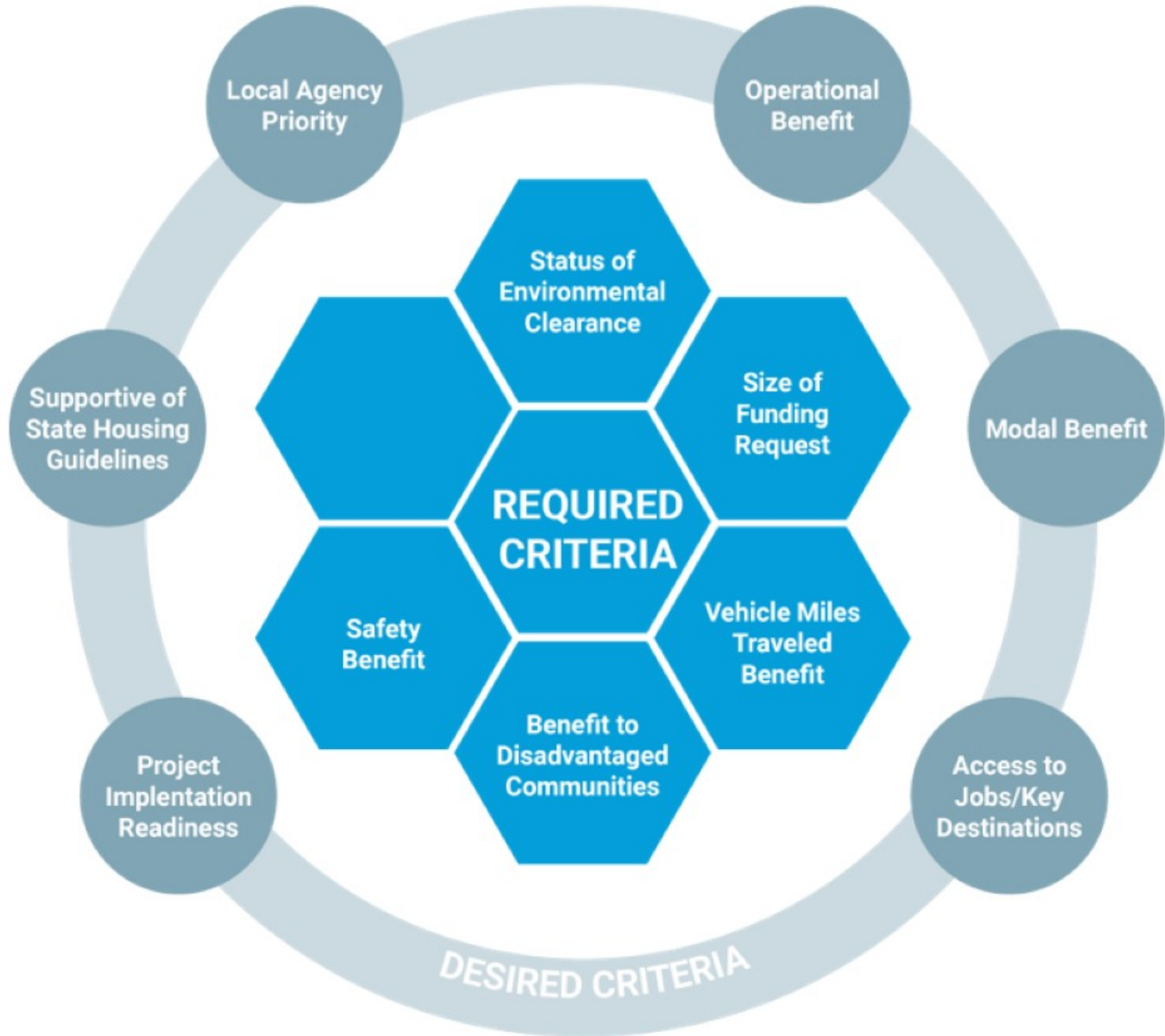


Gateway
Study

Project
Screening

Tier 1
Projects

Next
Steps



Gateway
Study

Project
Screening

Tier 1
Projects

Next
Steps

TIER 3

More advancement
needed to align with
the criteria

TIER 2

Align with most of the
required & desired
criteria

TIER 1

Significantly align
with the required
& desired criteria
shown

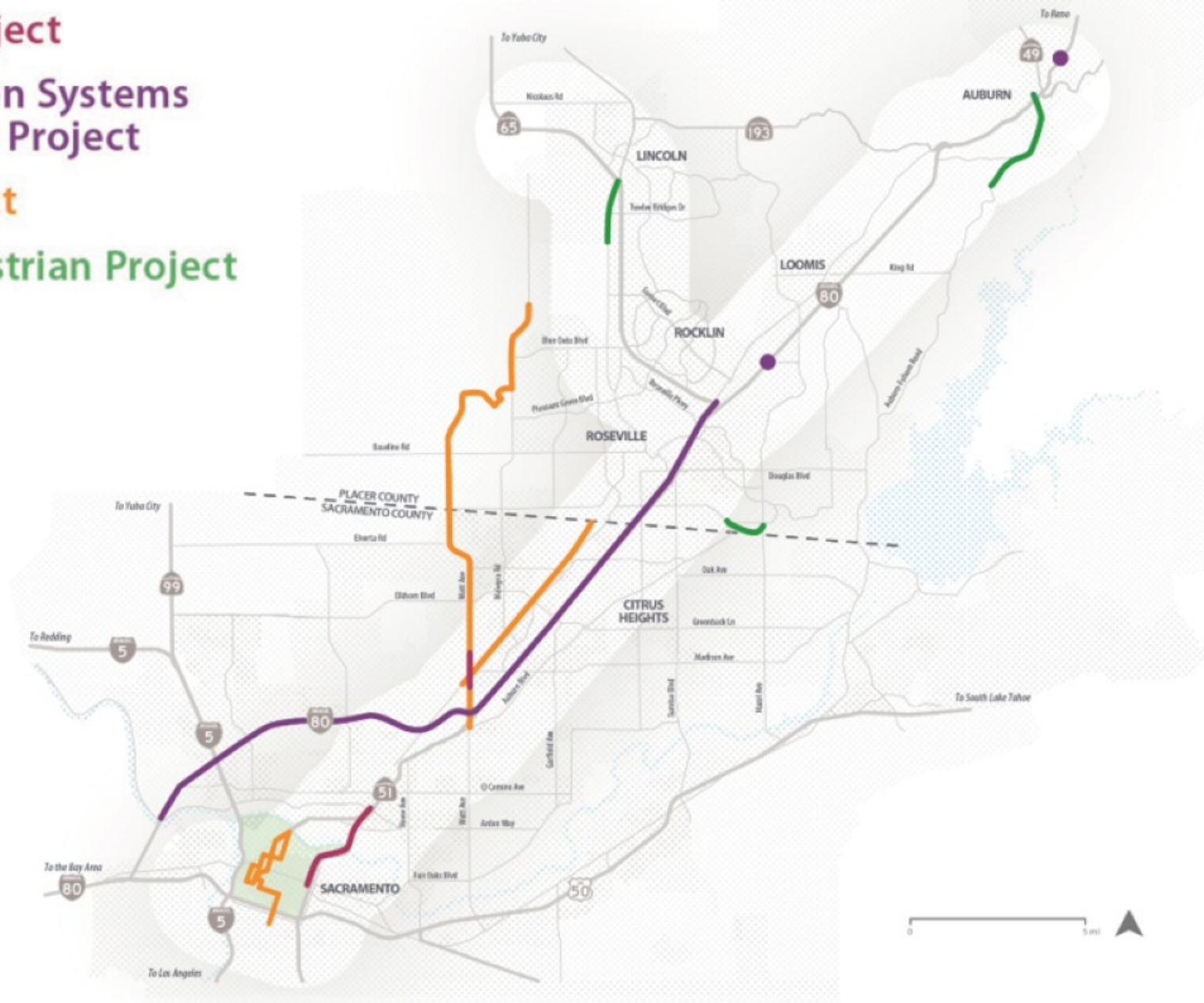
Gateway Study

Project Screening

Tier 1 Projects

Next Steps

-  Roadway Project
-  Transportation Systems Management Project
-  Transit Project
-  Bicycle/Pedestrian Project



Gateway
Study

Project
Screening

**Tier 1
Projects**

Next
Steps

- Roadway Project
- Transportation Systems Management Project
- Transit Project
- Bicycle/Pedestrian Project

PROJECT TITLE	PROJECT COST
State Route 51 (Capital City) Corridor: J St to Arden Way (Northbound Only)	\$439,700,000
Watt Avenue Corridor Improvements	\$30,000,000
Auburn Folsom Road Improvements	\$3,650,000
Dry Creek Greenway Trail - Phase 2	\$5,000,000
Lincoln Boulevard Improvements	\$11,000,000
Interstate 80 Express Lanes Phase 1: Sacramento River to SR-65	\$150,000,000
Bell Road/I-80 Roundabouts Project	\$7,424,000
Rocklin Road/I-80 Interchange	\$26,150,000
Sacramento to Roseville Third Track - Phase 1	\$143,000,000
Sacramento Valley Station (SVS) Improvements	\$83,774,000
North Watt Avenue BRT	\$31,020,000
TOTAL	\$930,718,000

Gateway
Study

Project
Screening

Tier 1
Projects

Next
Steps

REGIONAL PROJECTS	PROJECT COST
State Route 51 (Capital City) Corridor: J St to Arden Way (Northbound Only)	\$439,700,000
Interstate 80 Express Lanes Phase 1	\$150,000,000
Sacramento to Roseville Third Track	\$143,000,000
North Watt Avenue BRT	\$31,020,000

LOCAL PROJECT (PLACER COUNTY)	PROJECT COST
Auburn Folsom Road Improvements	\$3,650,000
Dry Creek Greenway Trail - Phase 2	\$5,000,000
Lincoln Boulevard Improvements	\$11,000,000
Bell Road/I-80 Roundabouts Project	\$7,424,000
Rocklin Road/I-80 Interchange	\$26,150,000

LOCAL PROJECT (SAC COUNTY)	PROJECT COST
Watt Avenue Corridor Improvements	\$30,000,000
Sacramento Valley Station (SVS)	\$83,774,000

State Route 51 (Capital City) J Street to Arden Way (Northbound)

Total Cost: \$439.7 million

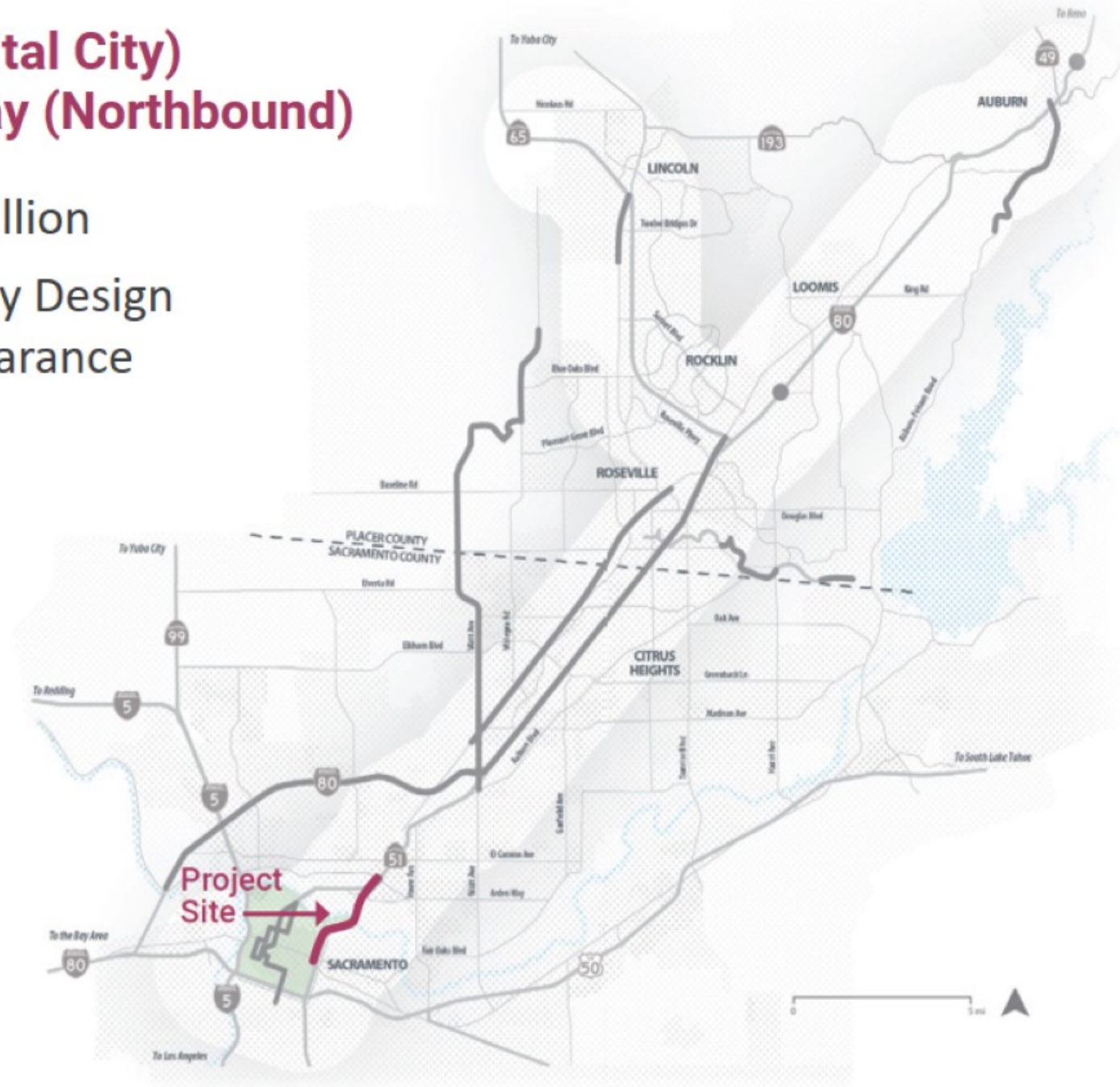
Status: In Preliminary Design
& Environmental Clearance

Gateway
Study

Project
Screening

Tier 1
Projects

Next
Steps



Watt Avenue Improvements

Total Cost: \$30 million

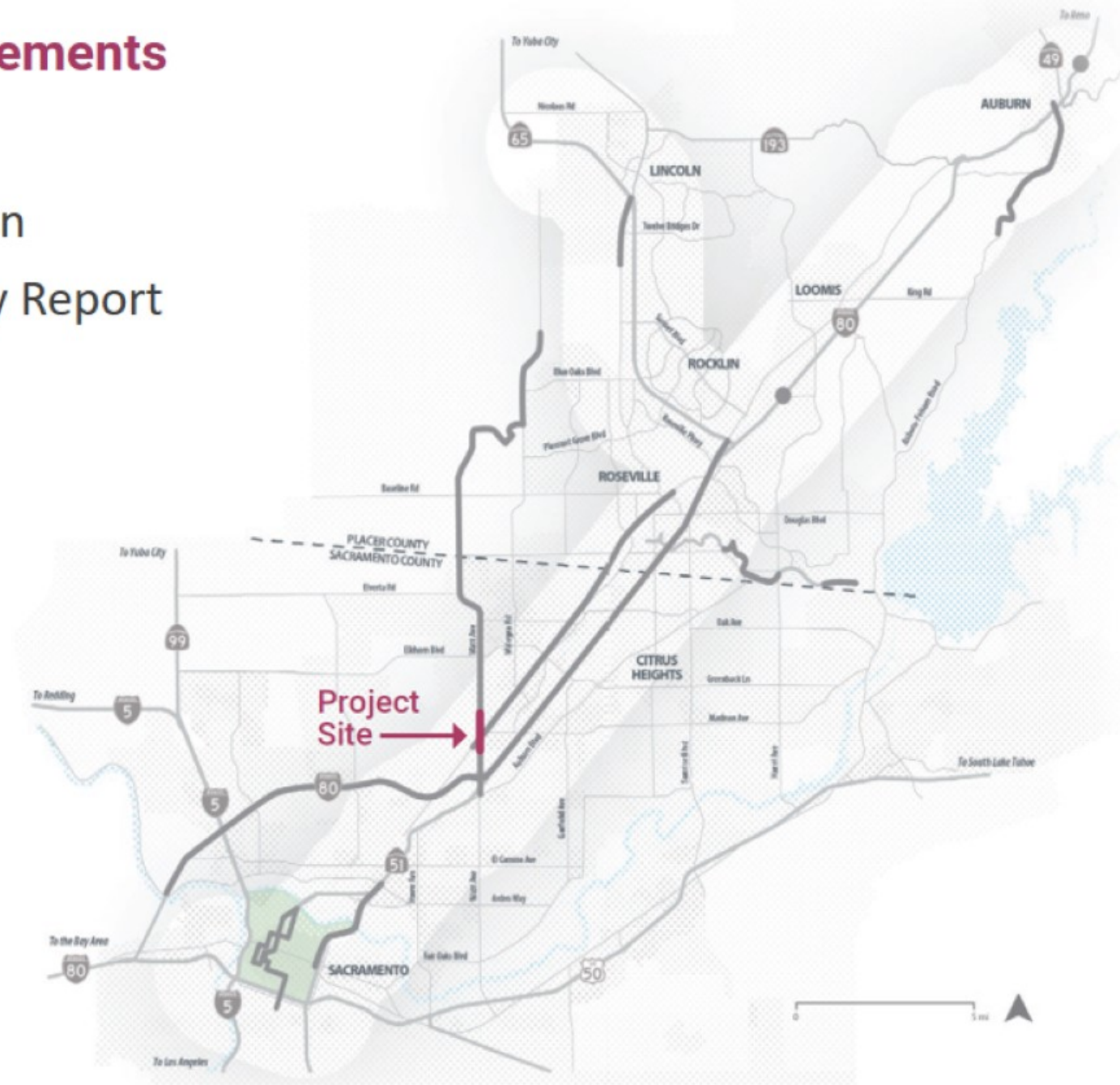
Status: Project Study Report Complete

Gateway Study

Project Screening

Tier 1 Projects

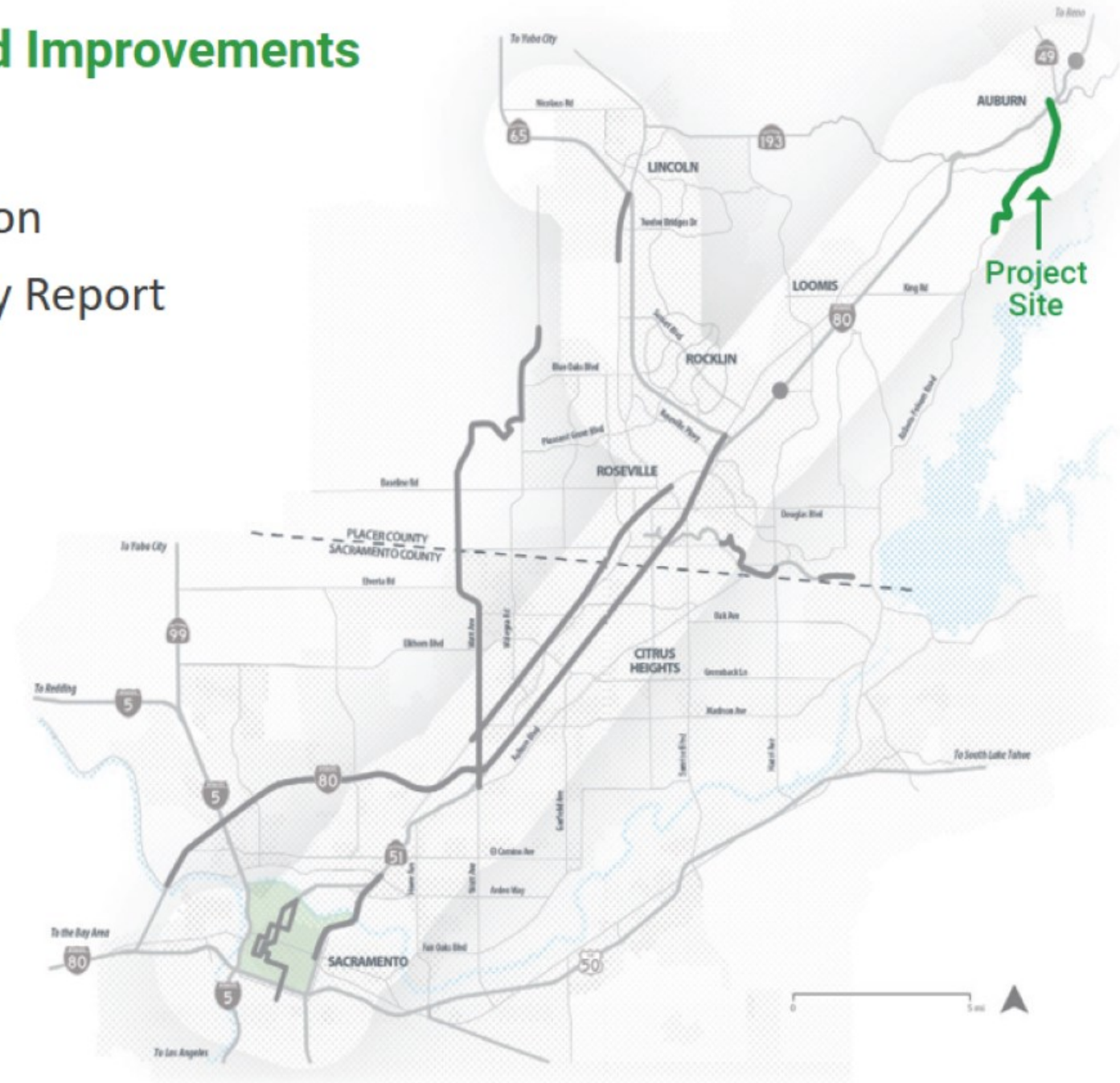
Next Steps



Auburn Folsom Road Improvements

Total Cost: \$3.7 million

Status: Project Study Report
Initiated



Gateway
Study

Project
Screening

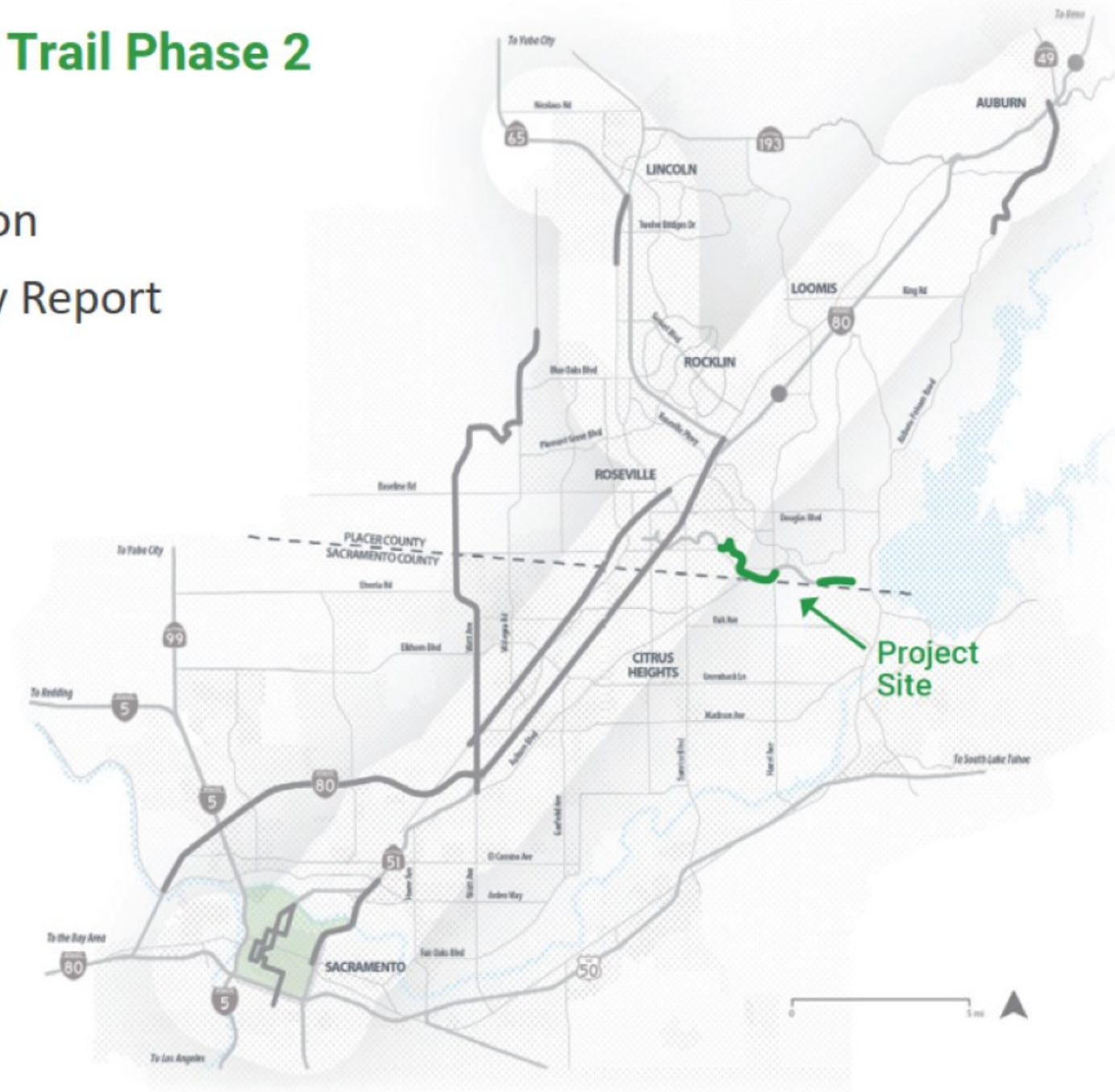
Tier 1
Projects

Next
Steps

Dry Creek Greenway Trail Phase 2

Total Cost: \$5.0 million

Status: Project Study Report Complete



Gateway Study

Project Screening

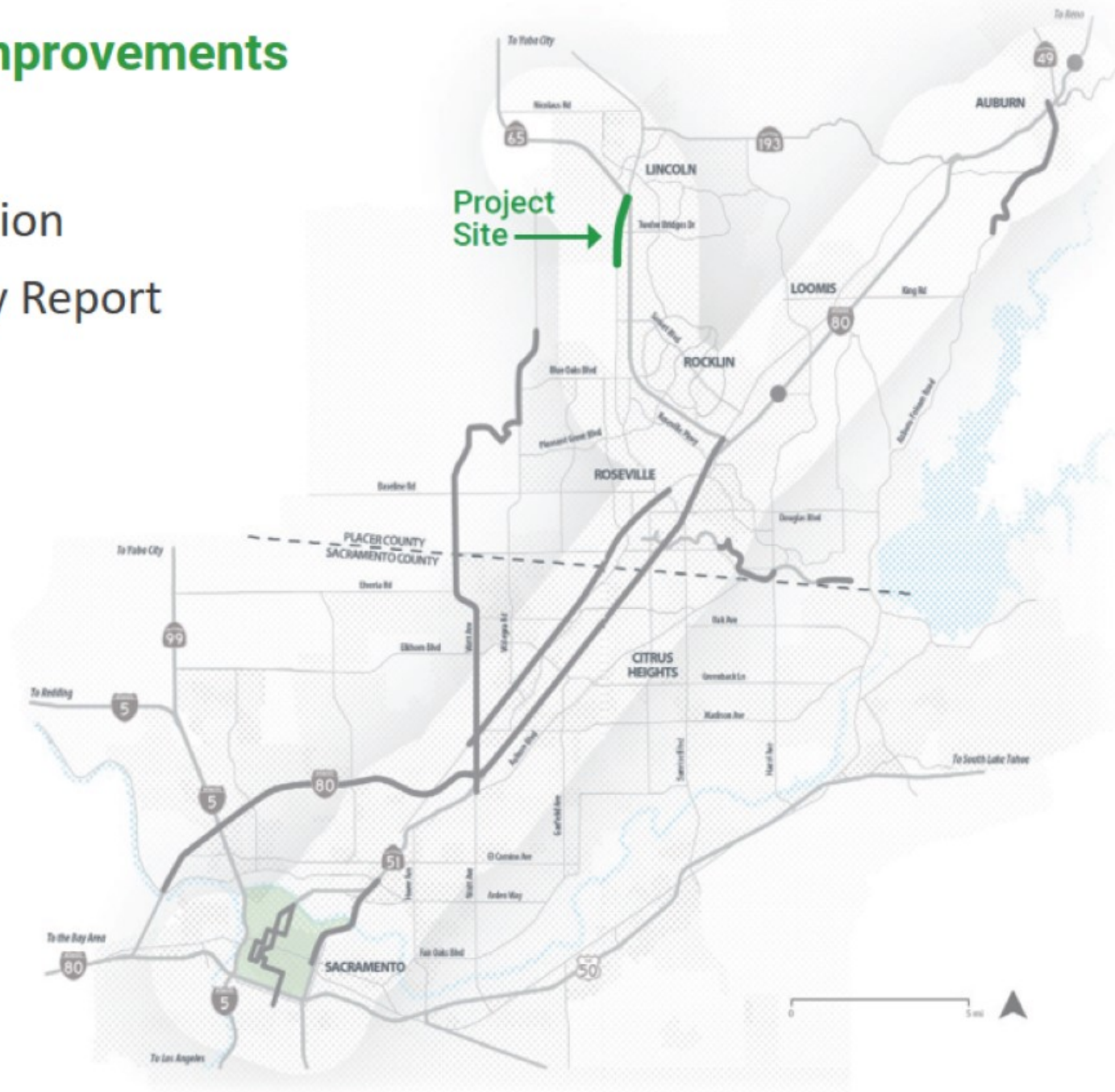
Tier 1 Projects

Next Steps

Lincoln Boulevard Improvements

Total Cost: \$11.0 million

Status: Project Study Report
Initiated



Gateway
Study

Project
Screening

Tier 1
Projects

Next
Steps

Gateway
Study

Project
Screening

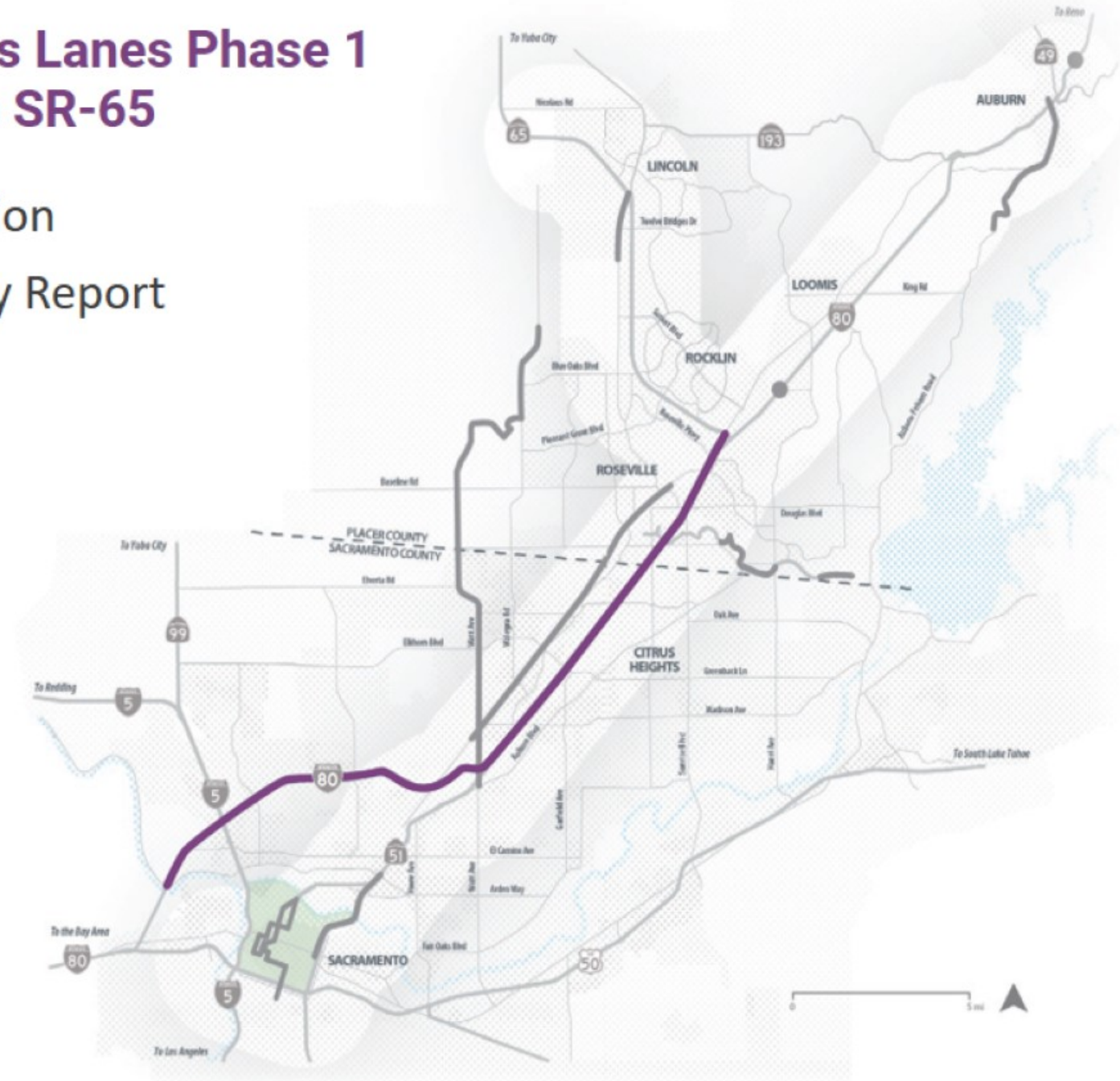
Tier 1
Projects

Next
Steps

Interstate 80 Express Lanes Phase 1 Sacramento River to SR-65

Total Cost: \$150 million

Status: Project Study Report
Initiated



Bell Road/I-80 Roundabouts Project

Gateway
Study

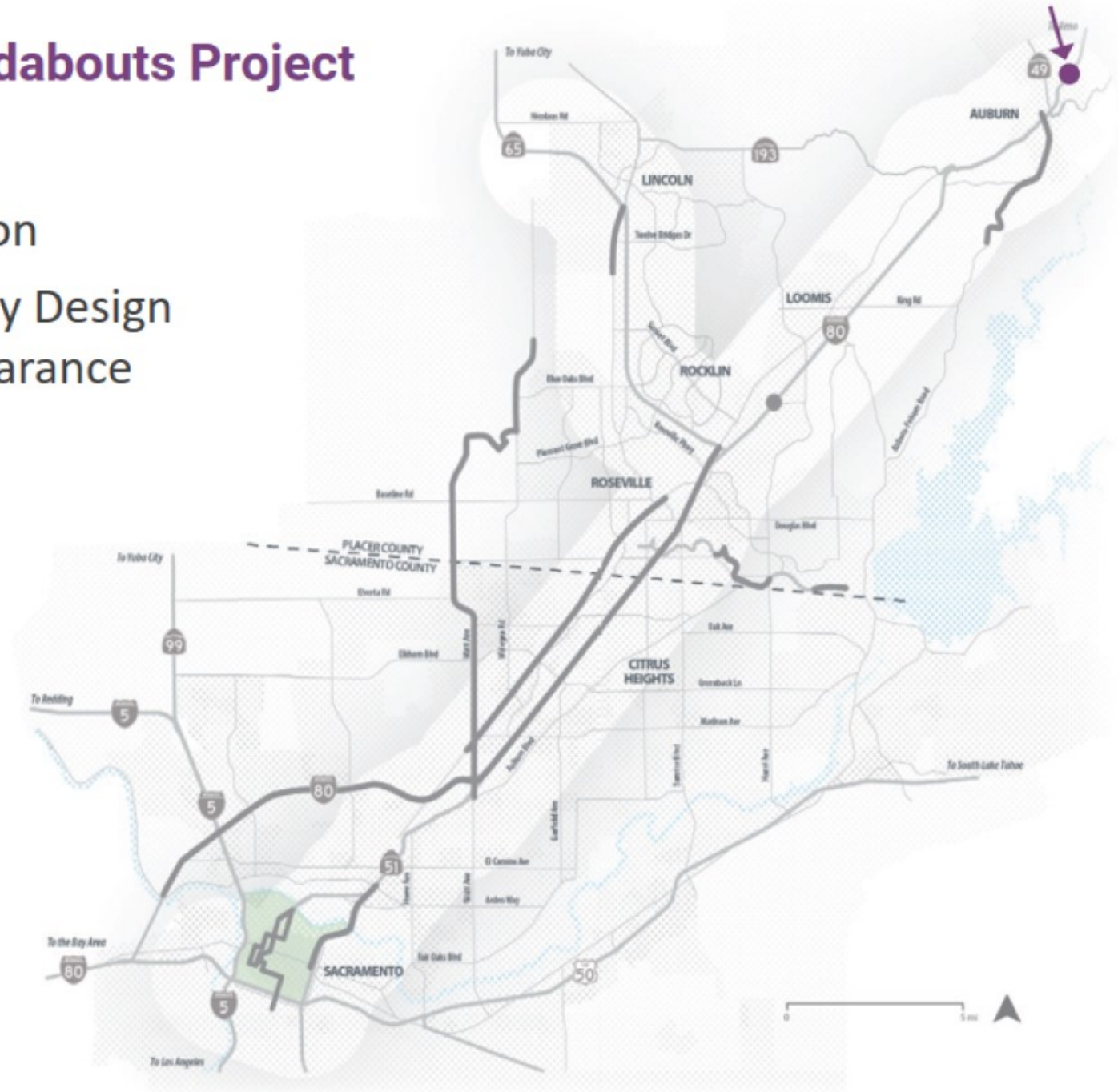
Project
Screening

Tier 1
Projects

Next
Steps

Total Cost: \$7.5 million

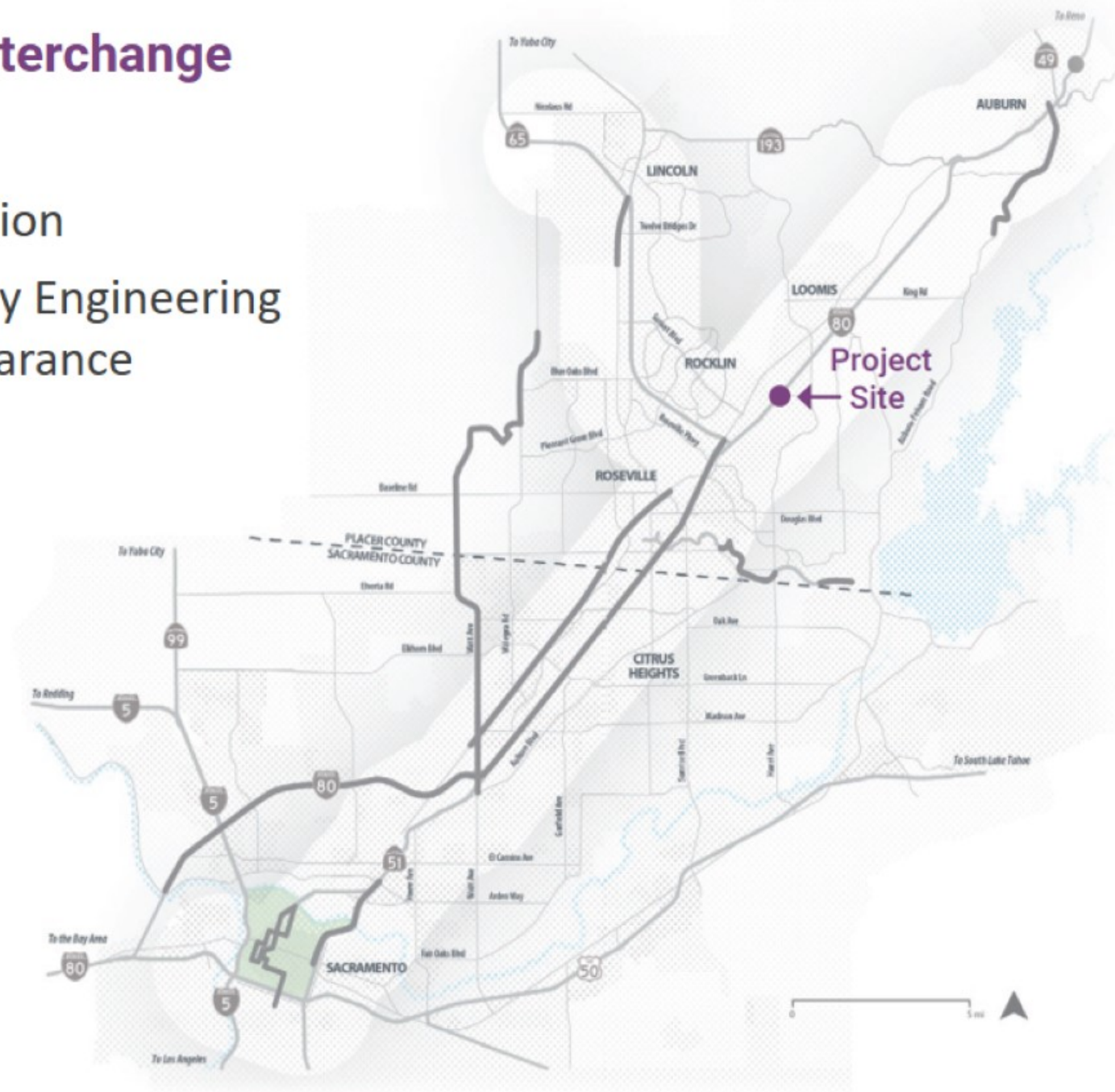
Status: In Preliminary Design
& Environmental Clearance



Rocklin Road/I-80 Interchange Reconfiguration

Total Cost: \$26.2 million

Status: In Preliminary Engineering & Environmental Clearance



Gateway
Study

Project
Screening

Tier 1
Projects

Next
Steps

Gateway
Study

Project
Screening

Tier 1
Projects

Next
Steps

Sacramento to Roseville Third Track – Phase 1

Total Cost: \$143 million

Status: In Final Design



Gateway
Study

Project
Screening

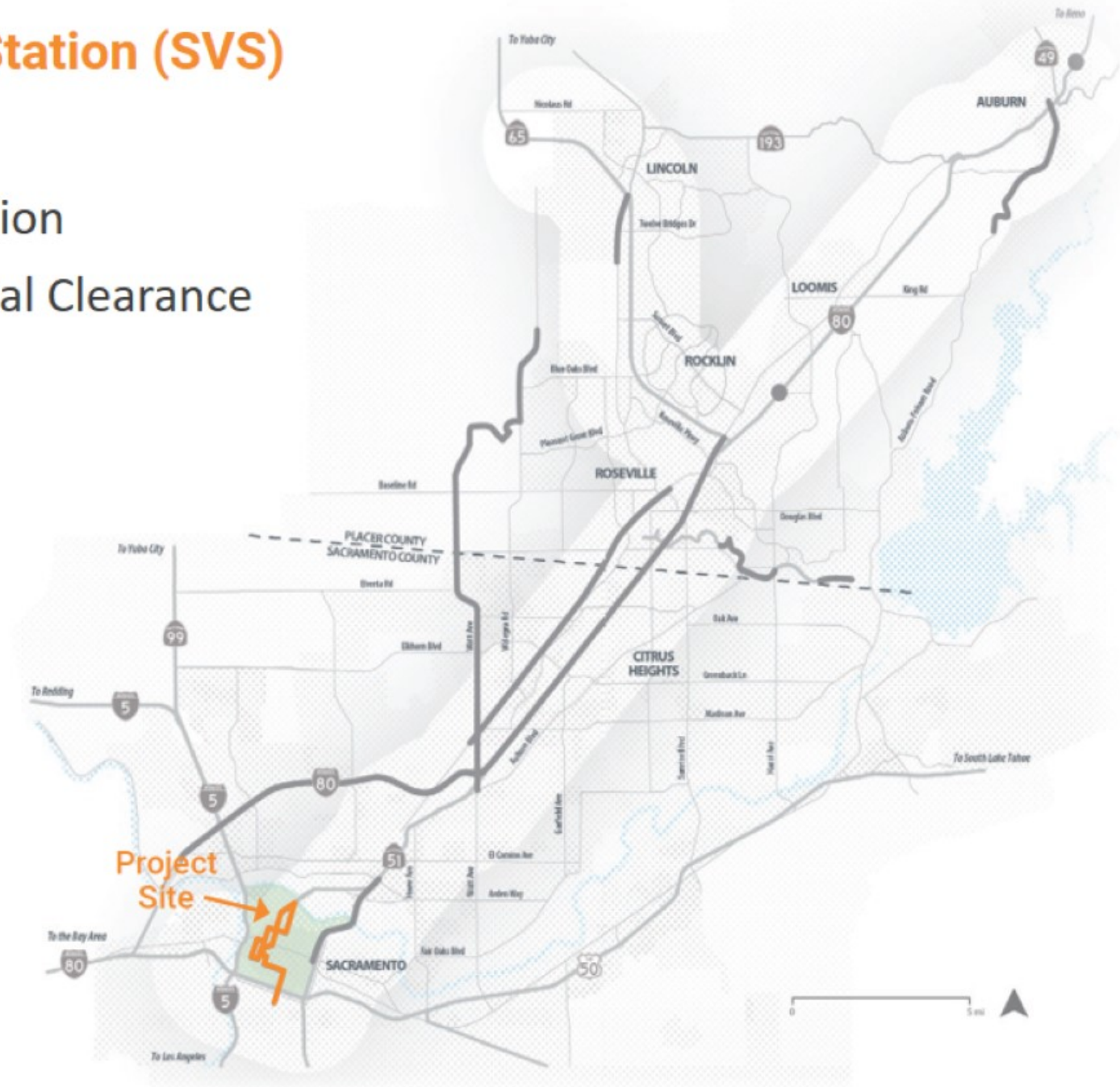
Tier 1
Projects

Next
Steps

Sacramento Valley Station (SVS) Improvements

Total Cost: \$83.8 million

Status: Environmental Clearance
Complete



Gateway
Study

Project
Screening

Tier 1
Projects

Next
Steps

North Watt Avenue Bus Rapid Transit (BRT)

Total Cost: \$31.0 million

Status: Project Study Report
Initiated



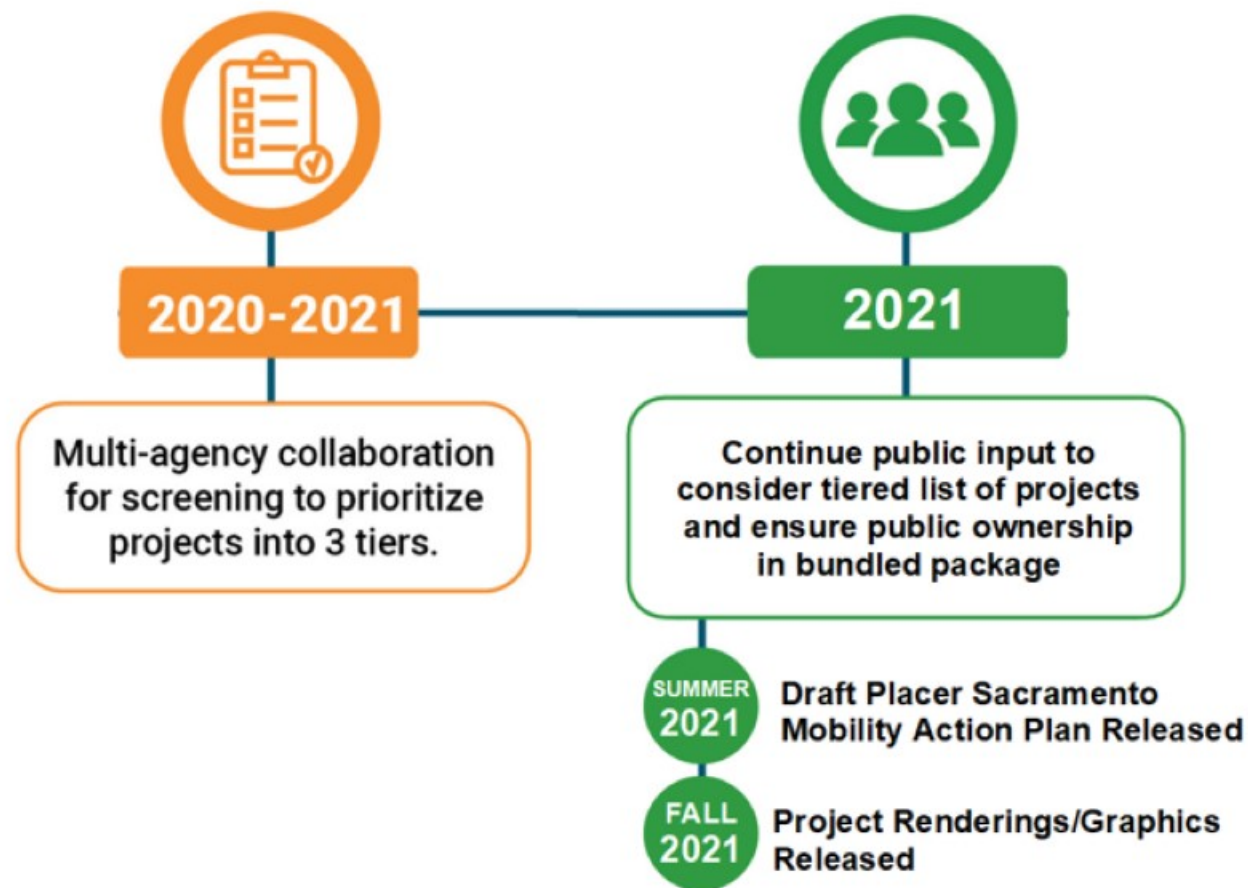
Gateway Study

Action Plan

Project Screening

Tier 1 Projects

Next Steps



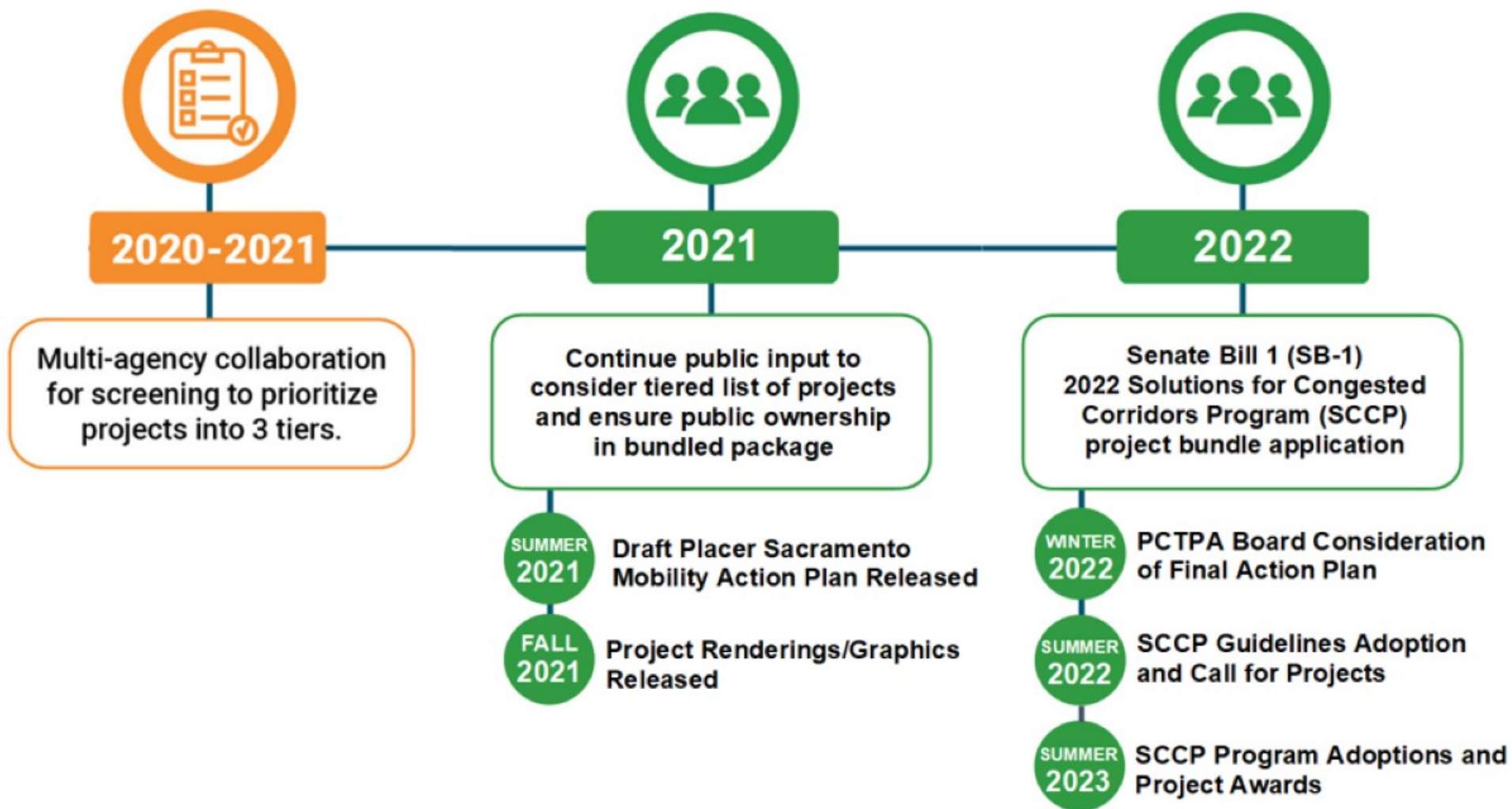
Gateway Study

Action Plan

Project Screening

Tier 1 Projects

Next Steps





Questions?