

TRAVEL TRENDS DURING COVID Through February 2021



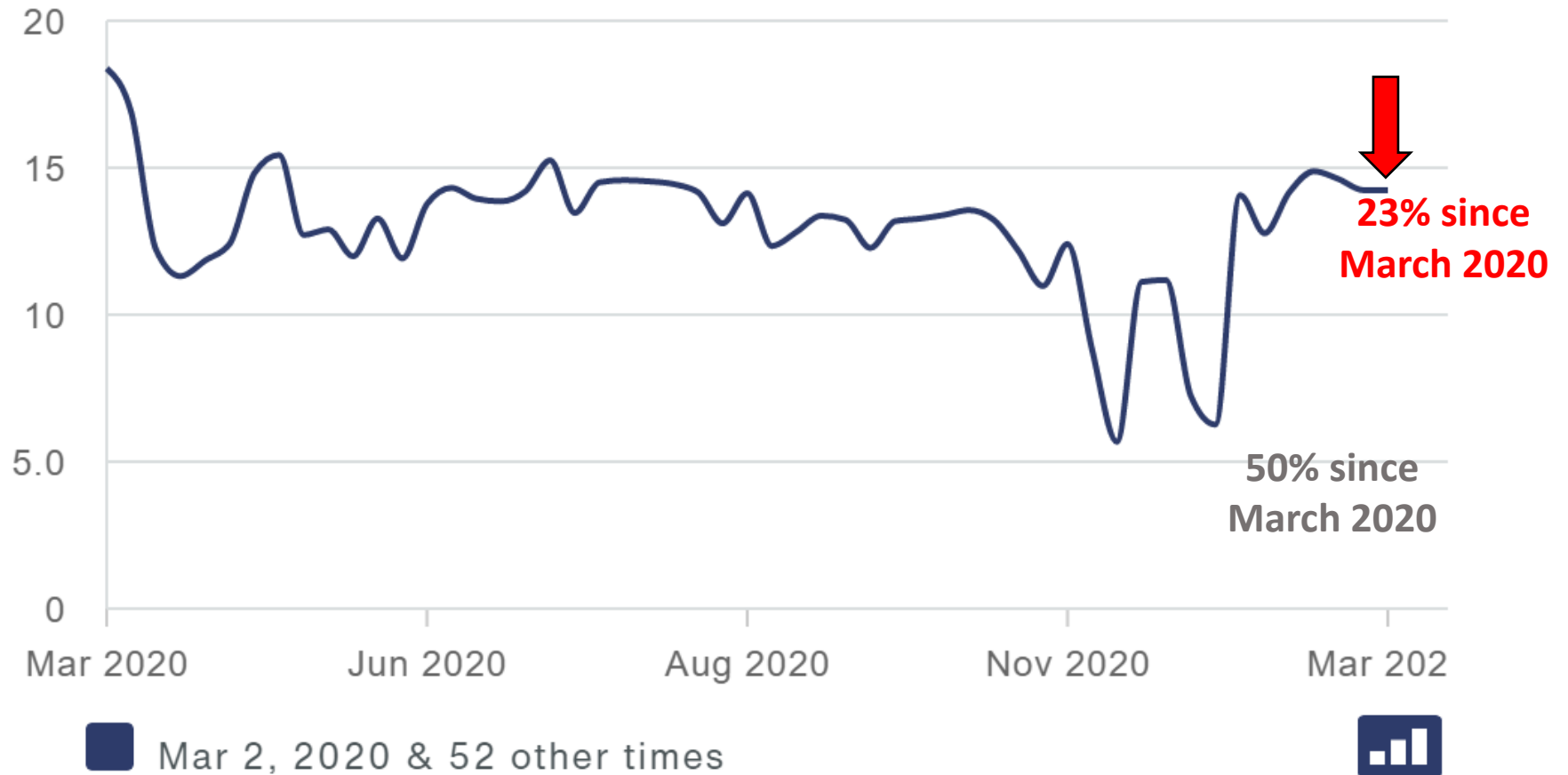
Placer County, CA

Residential Vehicle Miles Traveled (VMTs)

VMT per resident in this geography, average weekday

Week of **Mar 2, 2020** to the week of **Mar 1, 2021**

REPLICA



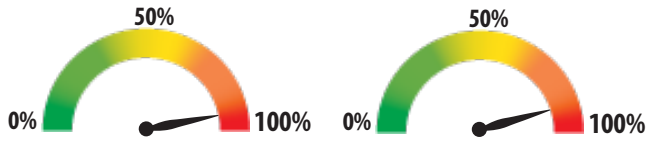
SR 65 Performance Metrics



SR 65 SB Return to Normal

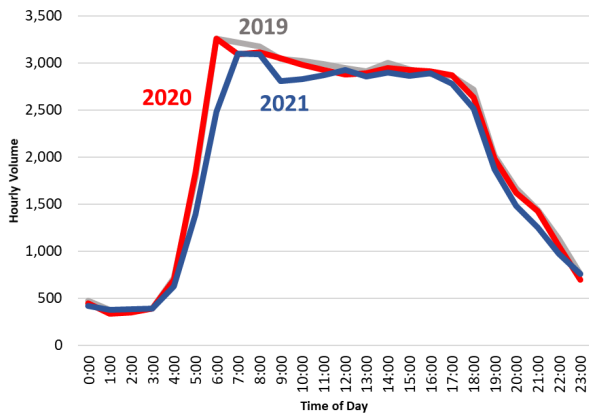
Volume

Speed

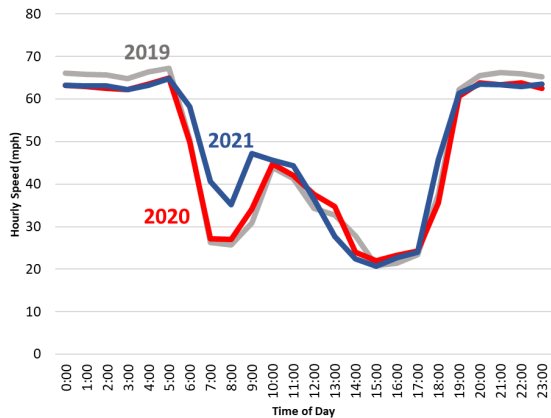


Source: Caltrans PEMS, VDS #314724

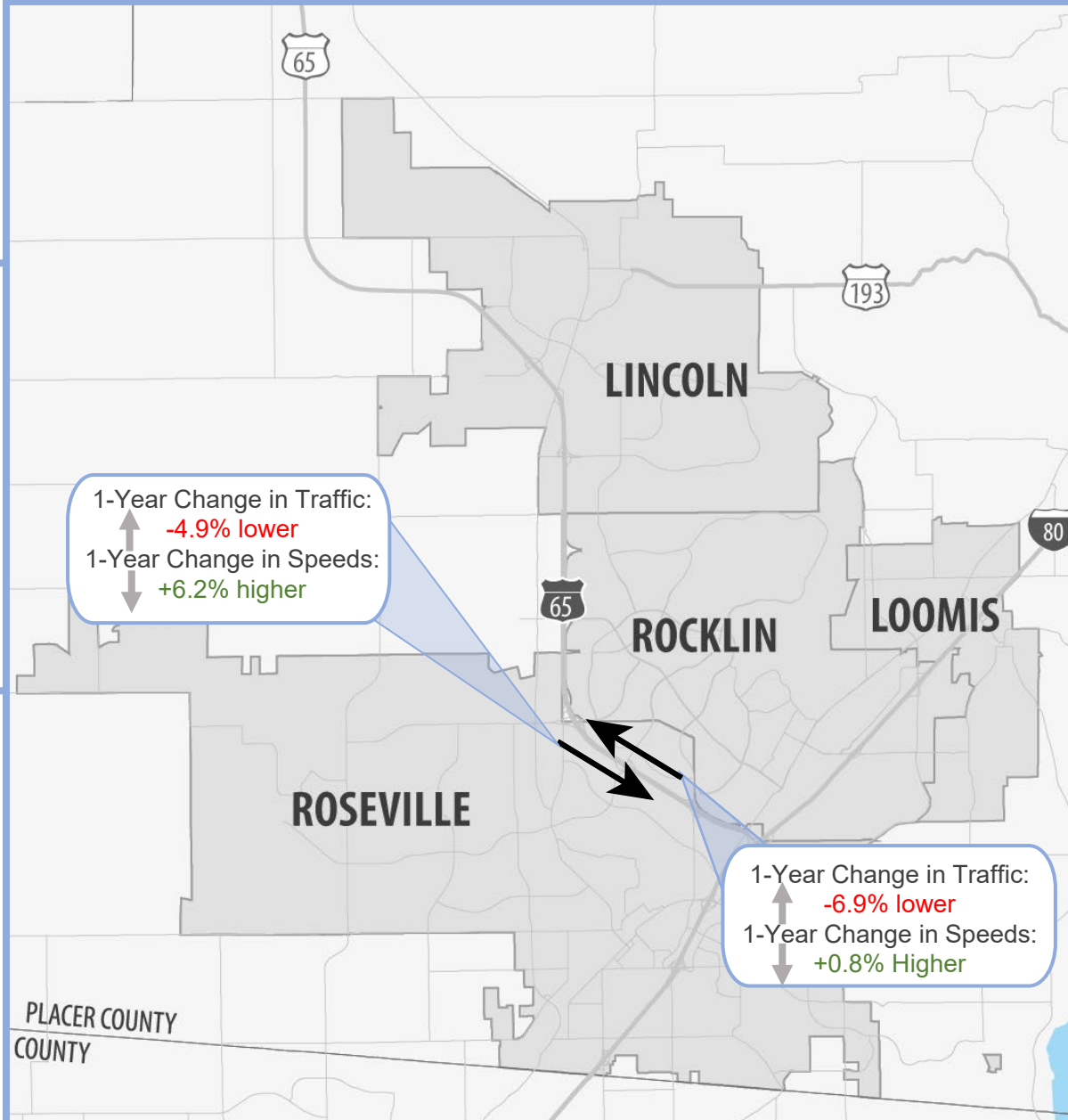
SR 65 SB Hourly Traffic Volumes - February



SR 65 SB Hourly Traffic Speeds - February



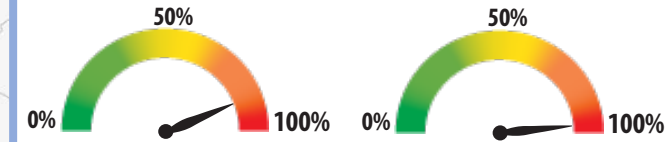
SR 65 Performance Metrics



SR 65 NB Return to Normal

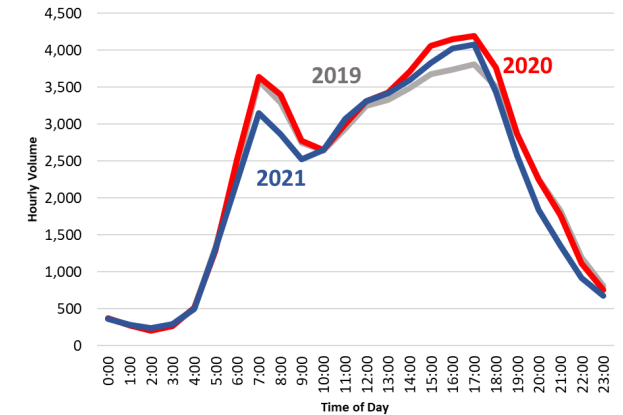
Volume

Speed

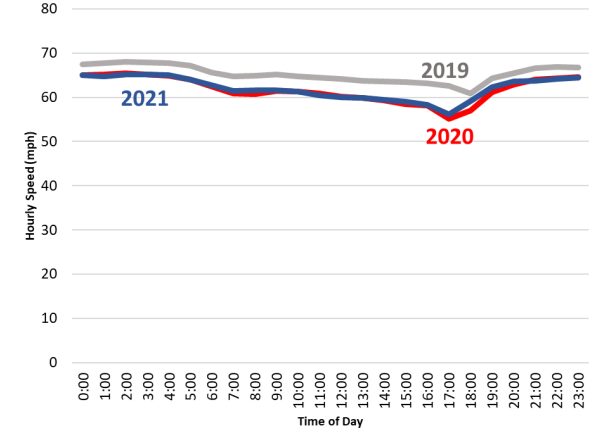


Source: Caltrans PEMS, VDS #316593

SR 65 NB Hourly Traffic Volumes - February



SR 65 NB Hourly Traffic Speeds - February

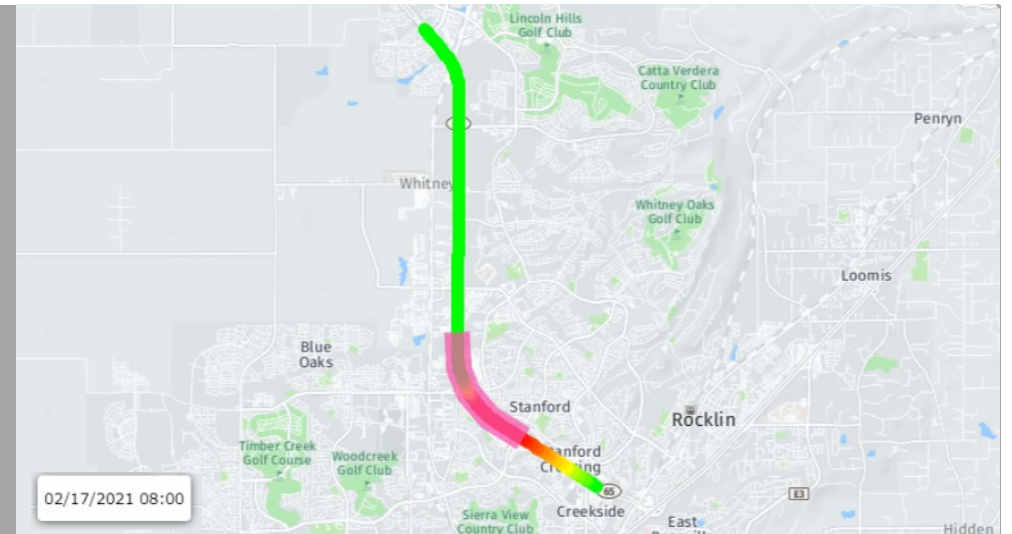
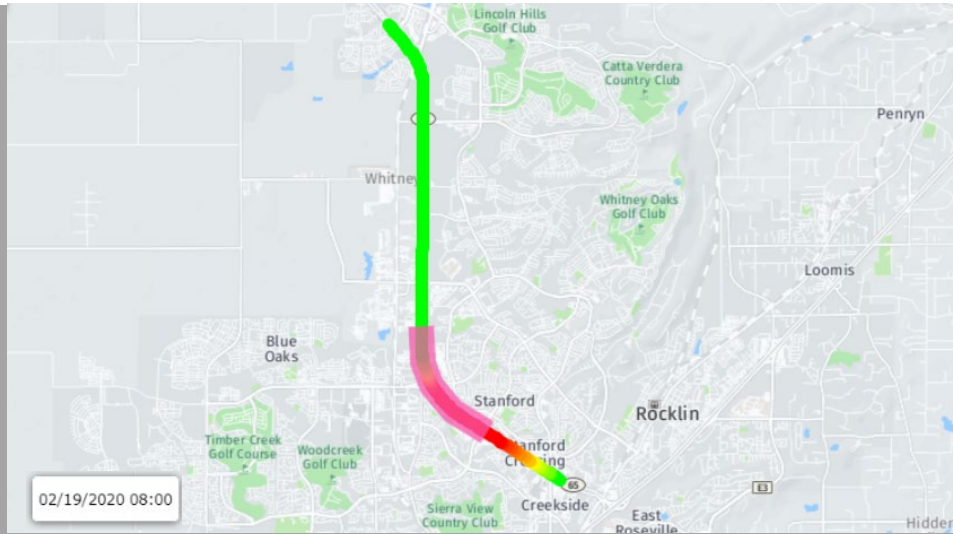


SR 65 SB Corridor Congestion Comparison

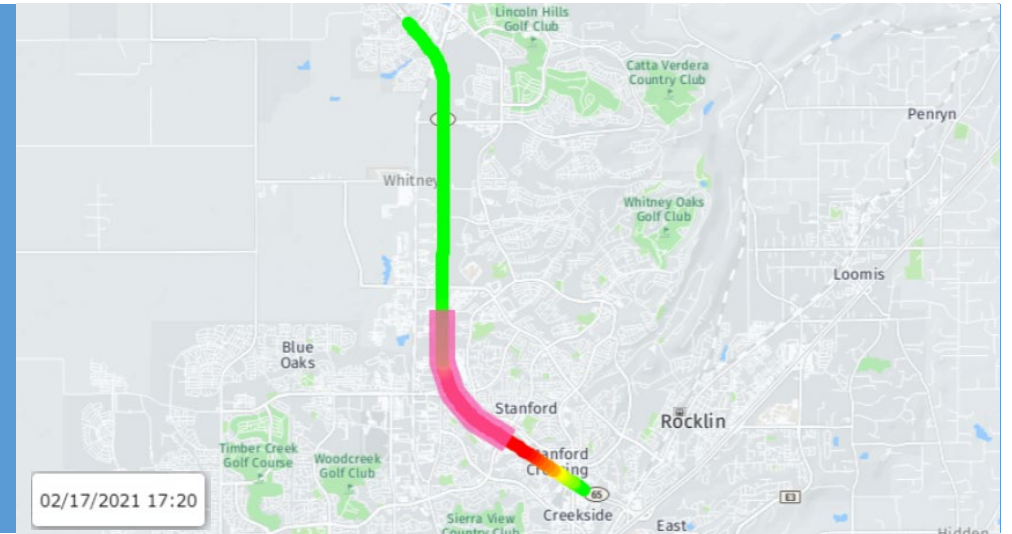
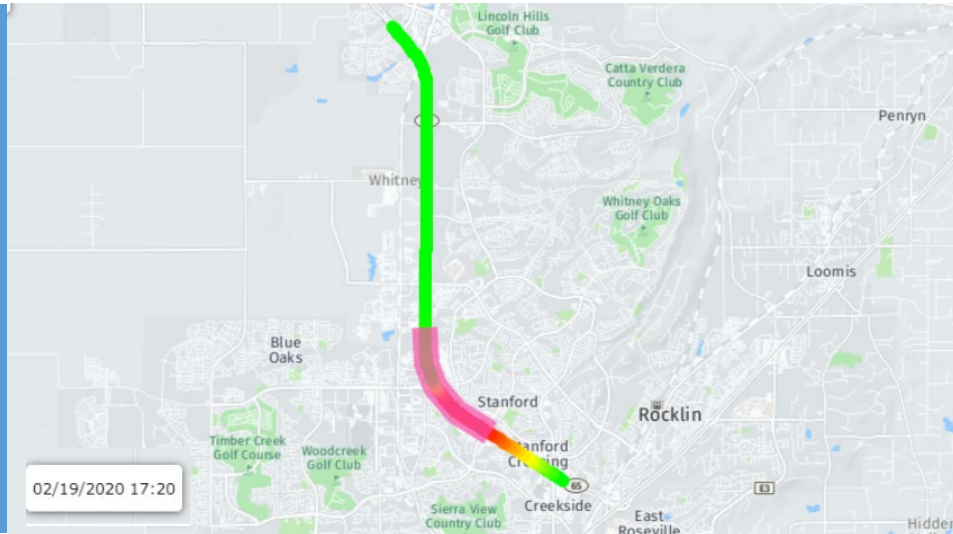
February 2020

February 2021

AM Commute



PM Commute



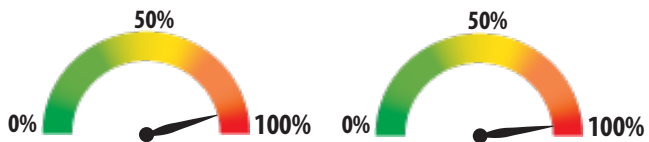
I-80 Performance Metrics



I-80 WB Return to Normal

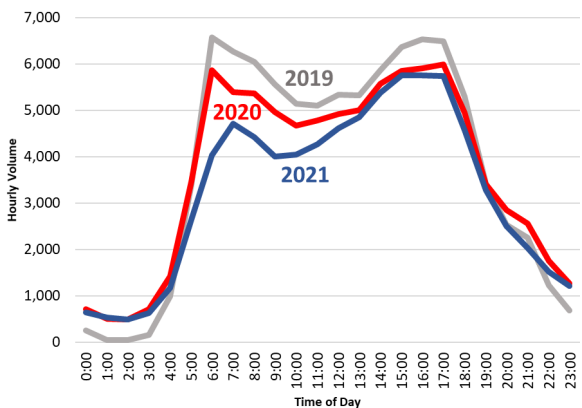
Volume

Speed

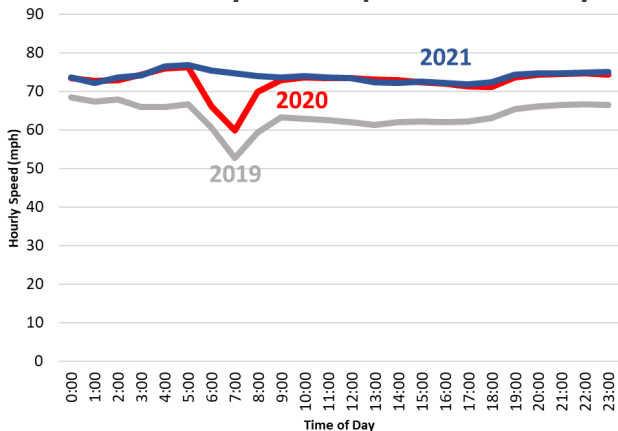


Source: Caltrans PEMS, VDS #318612

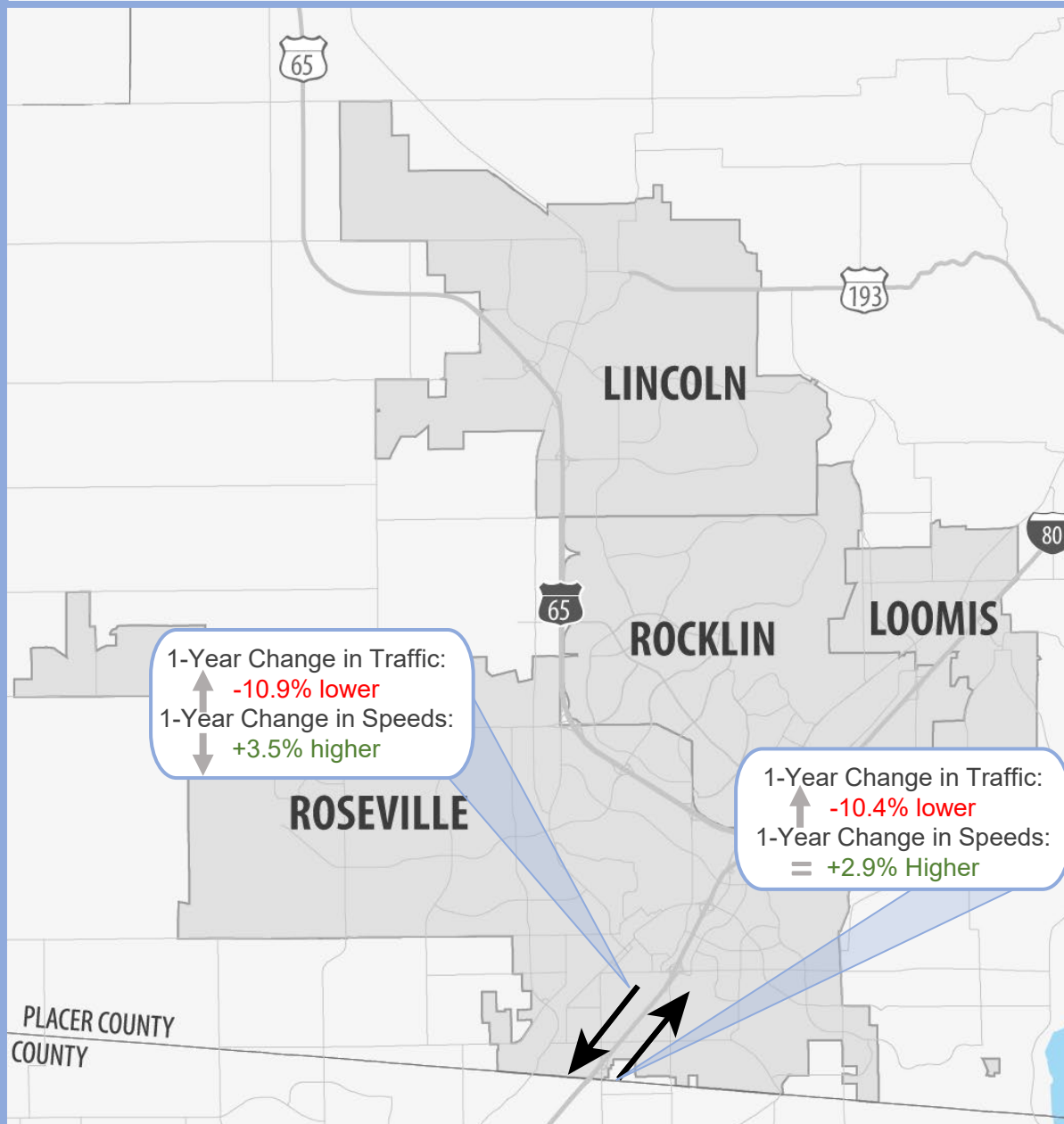
I-80 WB Hourly Traffic Volumes - February



I-80 WB Hourly Traffic Speeds - February



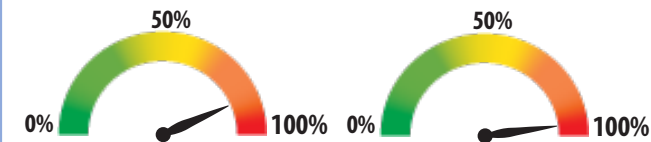
I-80 Performance Metrics



I-80 EB Return to Normal

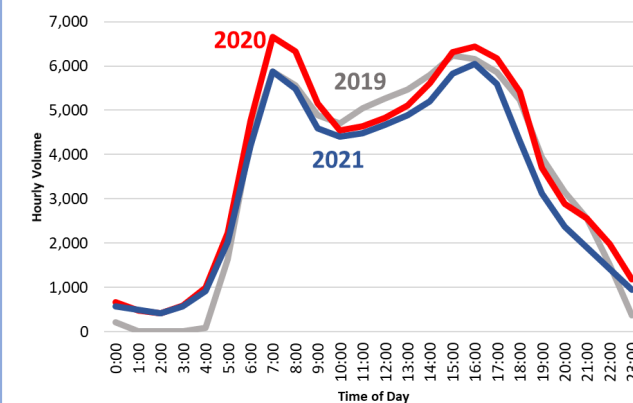
Volume

Speed

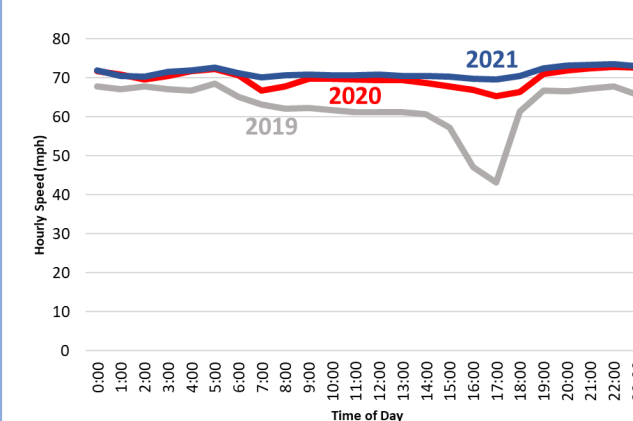


Source: Caltrans PEMS, VDS #318620

I-80 EB Hourly Traffic Volumes - February



I-80 EB Hourly Traffic Speeds - February

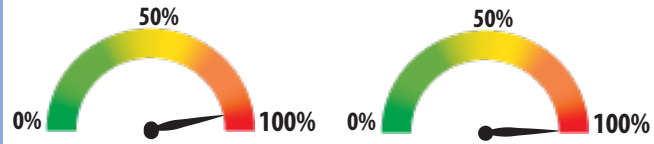


I-80 Performance Metrics

I-80 WB Return to Normal

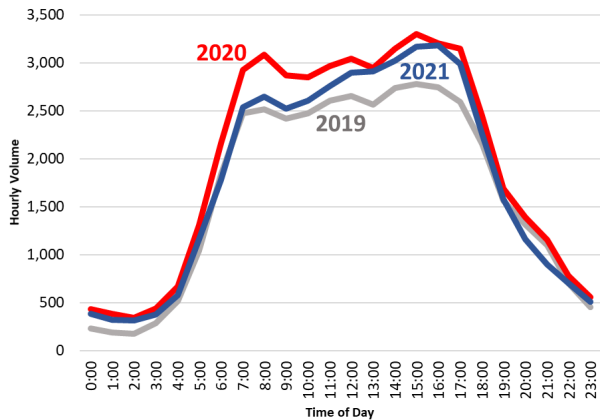
Volume

Speed

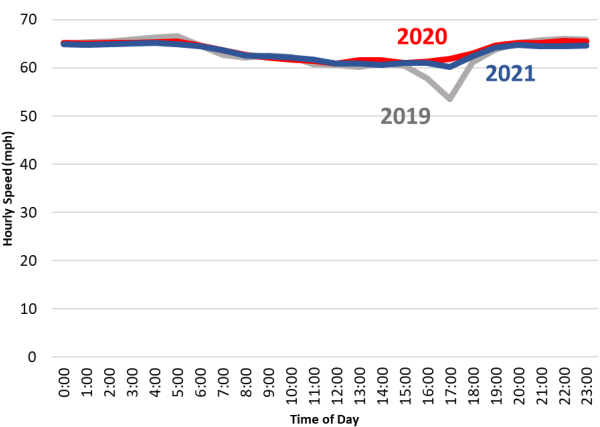


Source: Caltrans PEMS, VDS #317003

I-80 WB Hourly Traffic Volumes - February



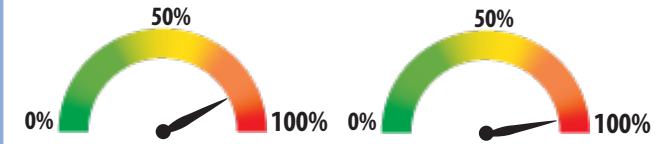
I-80 WB Hourly Traffic Speeds - February



I80 EB Return to Normal

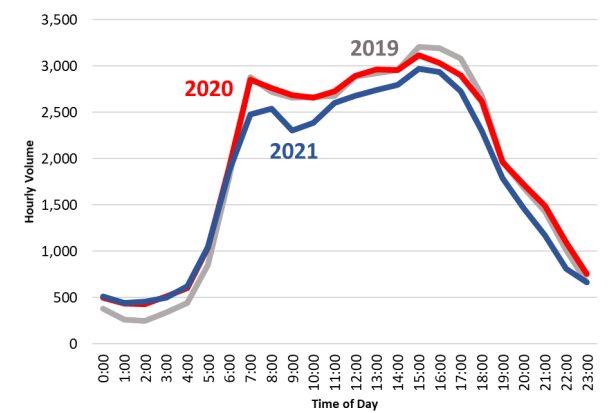
Volume

Speed

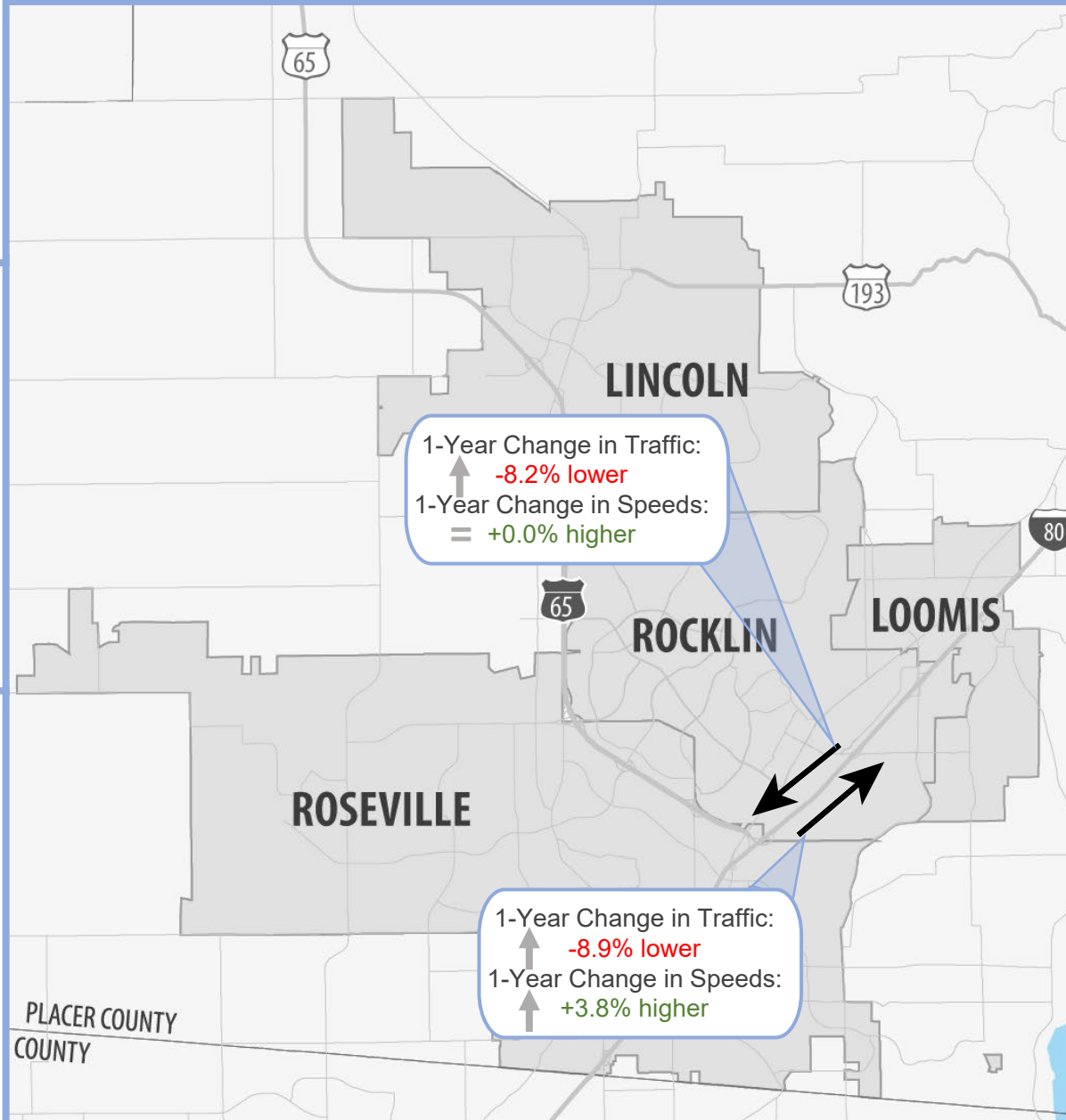
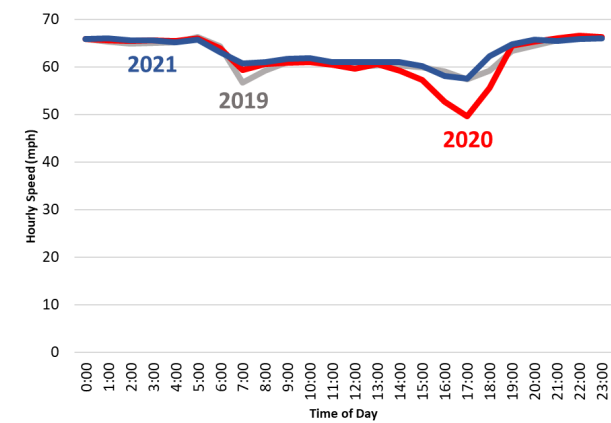


Source: Caltrans PEMS, VDS #317002

I-80 EB Hourly Traffic Volumes - February



I-80 EB Hourly Traffic Speeds - February

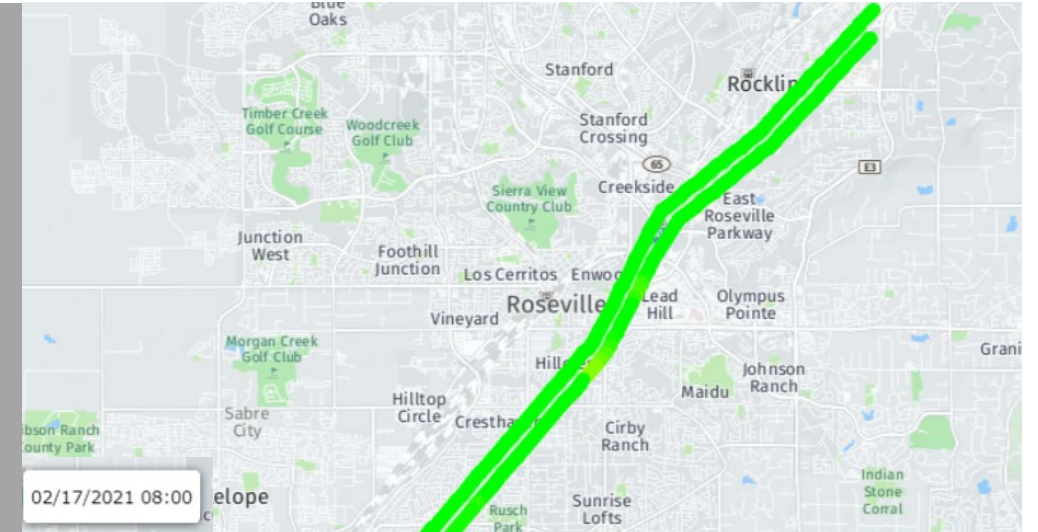
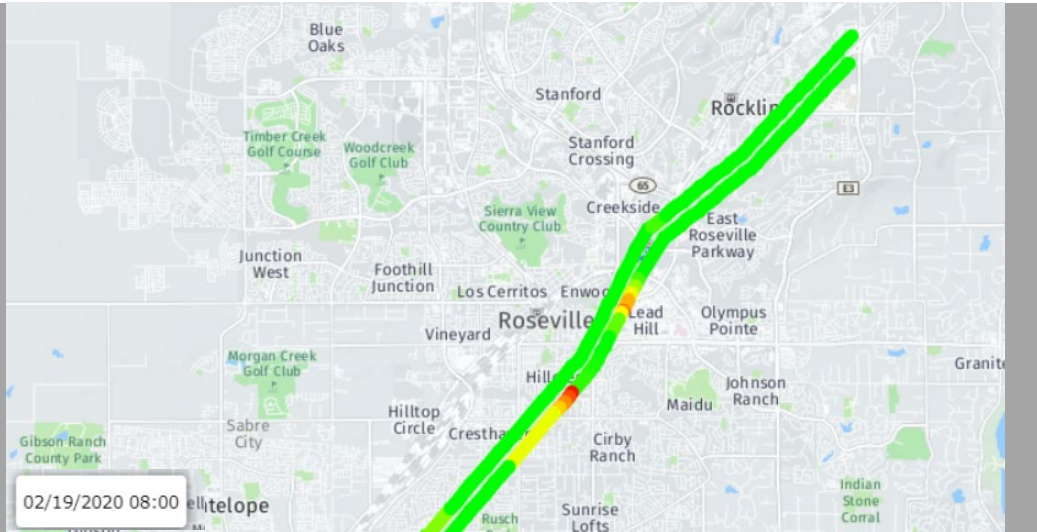


I-80 Corridor Congestion Comparison

February 2020

February 2021

AM Commute



PM Commute

