

**PREFERRED PROJECT ALTERNATIVE  
FOR THE  
HIGHWAY 65 WIDENING**



**PROJECT APPROVAL & ENVIRONMENTAL DOCUMENT  
(PA&ED) PHASE**

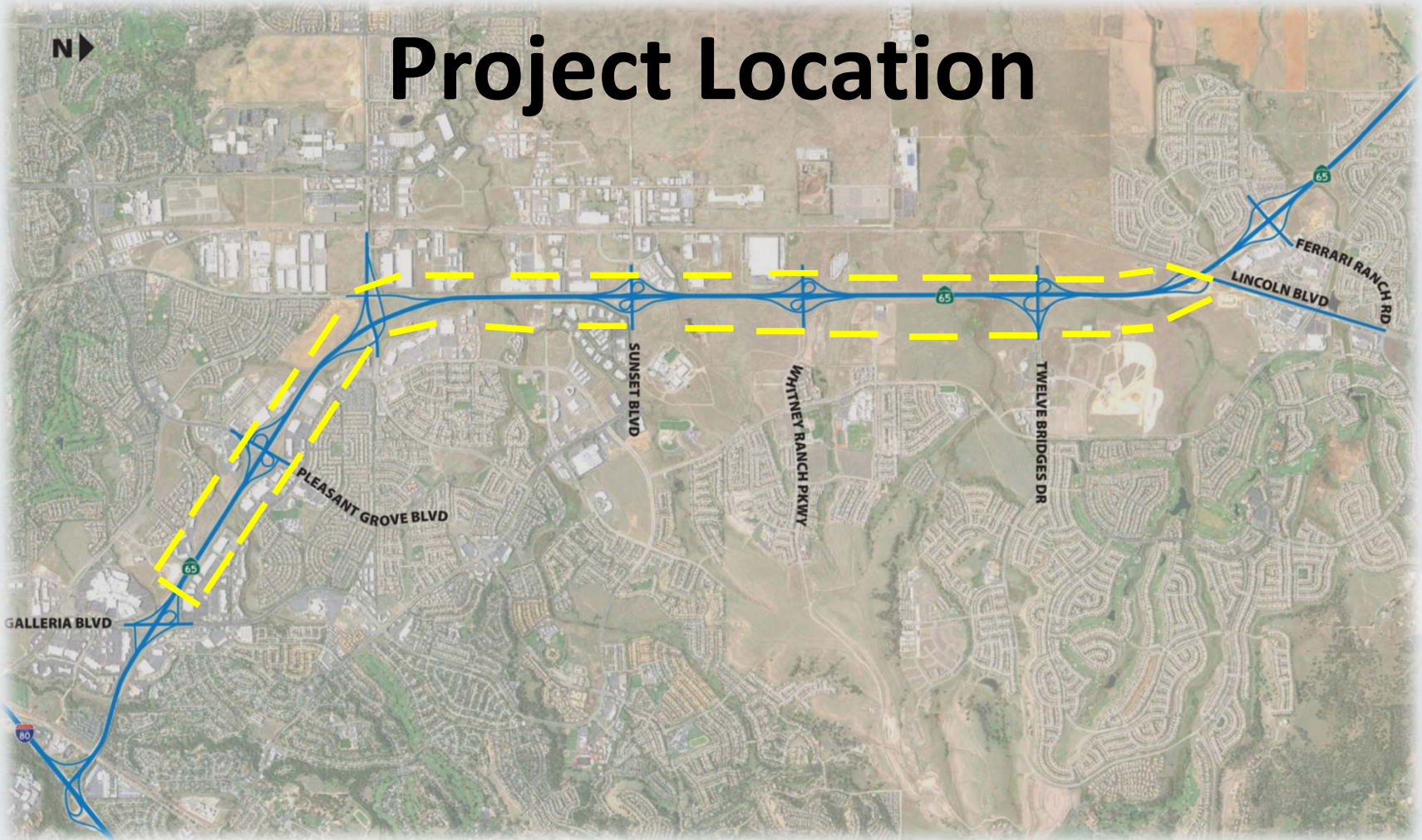


PLACER COUNTY  
TRANSPORTATION  
PLANNING AGENCY

December 6, 2017



# Project Location



# Goals and Objectives

- Increase Mobility
- Alleviate Congestion
- Improve Safety
- Economic Development



PLACER COUNTY  
TRANSPORTATION  
PLANNING AGENCY



ROCKLIN  
CALIFORNIA



Caltrans®



65

Widening

# Existing Morning Traffic Congestion

Looking *South* From Sunset Boulevard





Existing Evening Traffic Congestion  
Looking *South* From Galleria Boulevard

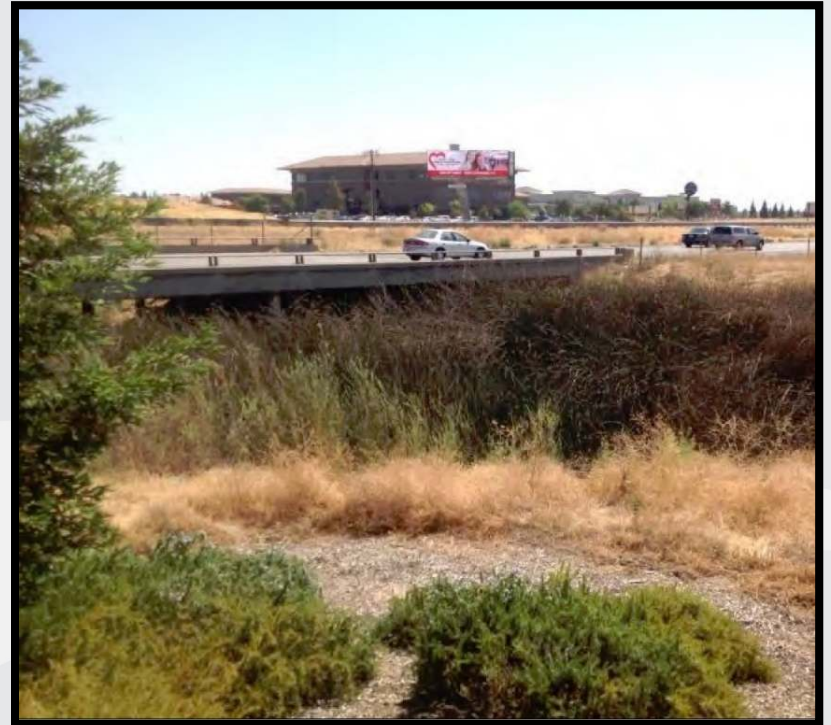
# Public Outreach

- ✓ Community Meeting in City of Lincoln – July 2014
- ✓ Six Town Hall Meetings – November 2015
- ✓ Project Update in City of Roseville – November 2016
- ✓ Sheridan and Rural Lincoln Municipal Advisory Councils – October 2017
- ✓ Project Website
- ✓ Newsletters and Social Media



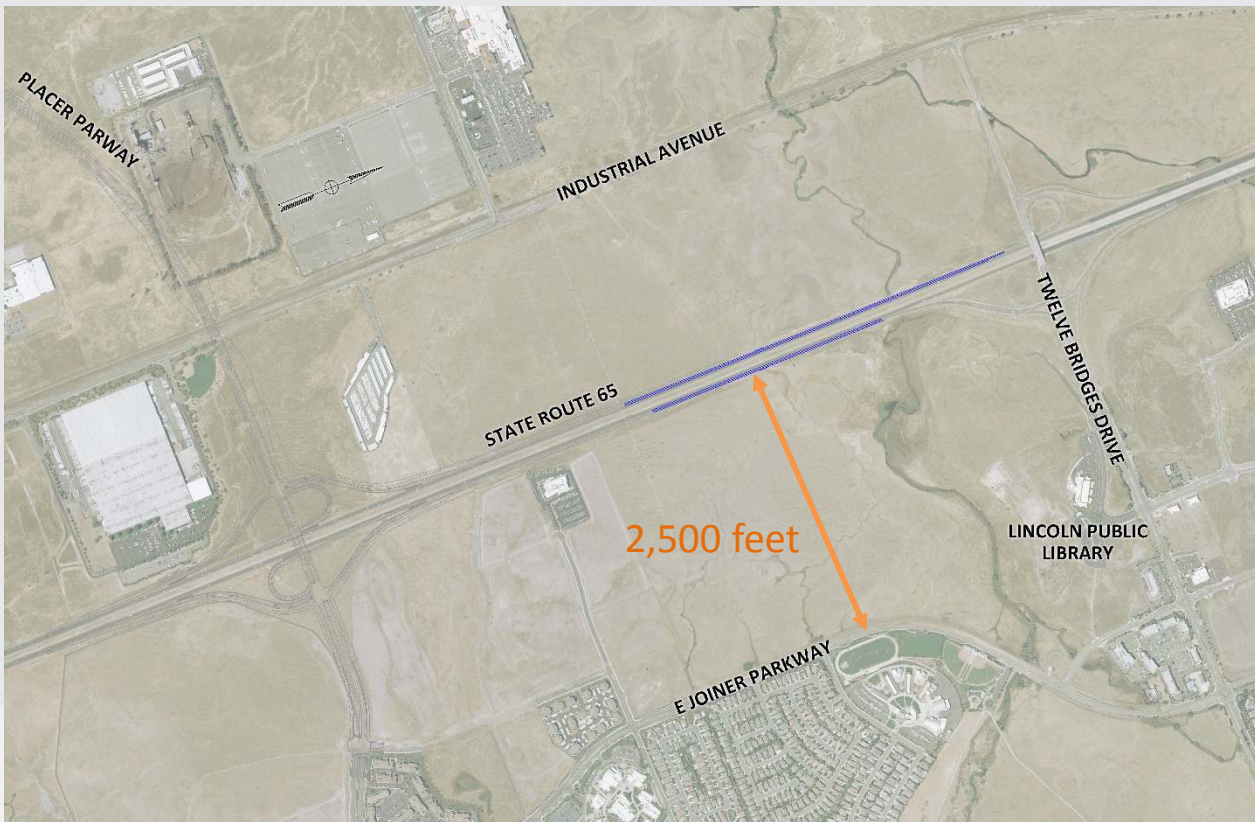
# Draft Environmental Document

- 30-Day Public Review  
(May 12 to June 14, 2017)
- 18 Comments Received
  - 5 Agencies
  - 1 Tribe
  - 10 Individuals
  - 1 Organization



# Draft Environmental Document Comments Received

- **Comment:** Request for sound walls near Twelve Bridges Drive
- **Response:** Noise analysis shows not required





# Draft Environmental Document Comments Received

- **Comment:** Evaluate non-roadway widening alternatives for accommodating future traffic
- **Response:** Alternative transportation options are being pursued through complementary efforts, this project is one component of the future transportation system

*Let's make bicycling better in Placer County!*



**Virtual Community Workshop**  
Thursday, June 8-22  
[www.pctpa.net/bikewayplan](http://www.pctpa.net/bikewayplan)

Invest a few minutes and share your thoughts on ways to improve the cycling experience for everyone. Placer County Transportation Planning Agency (PCTPA) and Placer County are hosting a "Virtual Community Workshop." You can join the discussion at [www.pctpa.net/bikewayplan](http://www.pctpa.net/bikewayplan) and answer 7 quick questions.

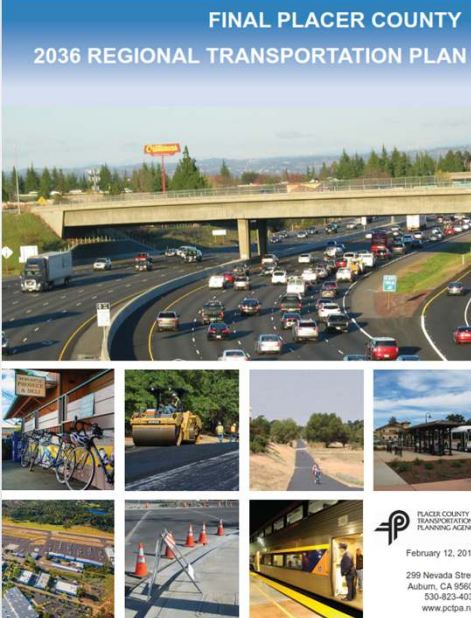
Your input will help PCTPA and Placer County update the Placer County Regional Bikeway Plan.


The Virtual Workshop will be available from Thursday, June 8 until Thursday, June 22. Be sure to share the link and encourage everyone to join the conversation.

916-442-1168 [www.pctpa.net](http://www.pctpa.net) [facebook.com/pctpa](https://facebook.com/pctpa) [twitter.com/pctpa](https://twitter.com/pctpa)

**FINAL PLACER COUNTY  
2036 REGIONAL TRANSPORTATION PLAN**



 PLACER COUNTY  
TRANSPORTATION  
PLANNING AGENCY

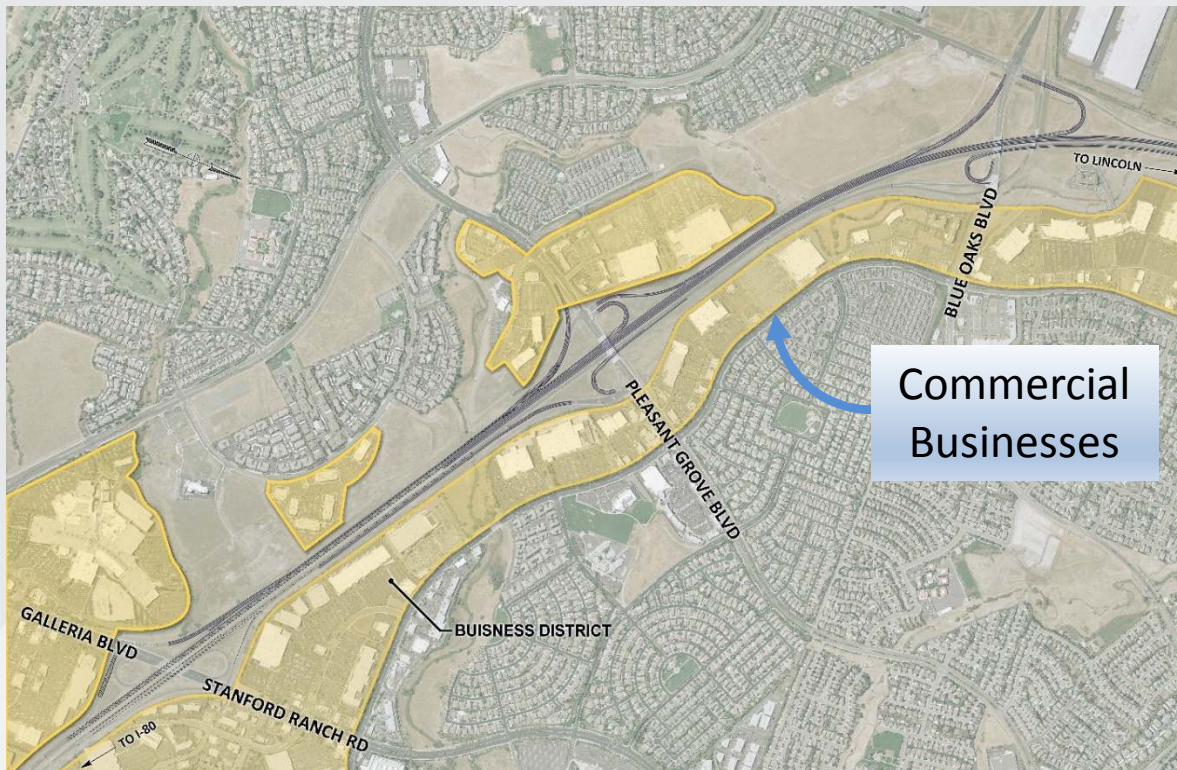
February 12, 2016

299 Nevada Street  
Auburn, CA 95603  
530-823-4030  
[www.pctpa.net](http://www.pctpa.net)

**65**  
**Widening**

# Draft Environmental Document Comments Received

- **Comment:** Freeway widening will support existing businesses
- **Response:** Economic development is a key part of the project purpose and need



Commercial  
Businesses



# Draft Environmental Document Comments Received

## Summary of Agency Comments:

- **City of Roseville** – Requested continued coordination for utilities
- **Placer County Flood Control and Water Conservation District** – Provided notification of current floodplain mapping
- **California Department of Fish and Wildlife** – Provided jurisdiction input, responsible agency role, and listed species within the project area
- **Central Valley Regional Water Quality Control Board** - Standard comments
- **State Clearinghouse** - Standard comments

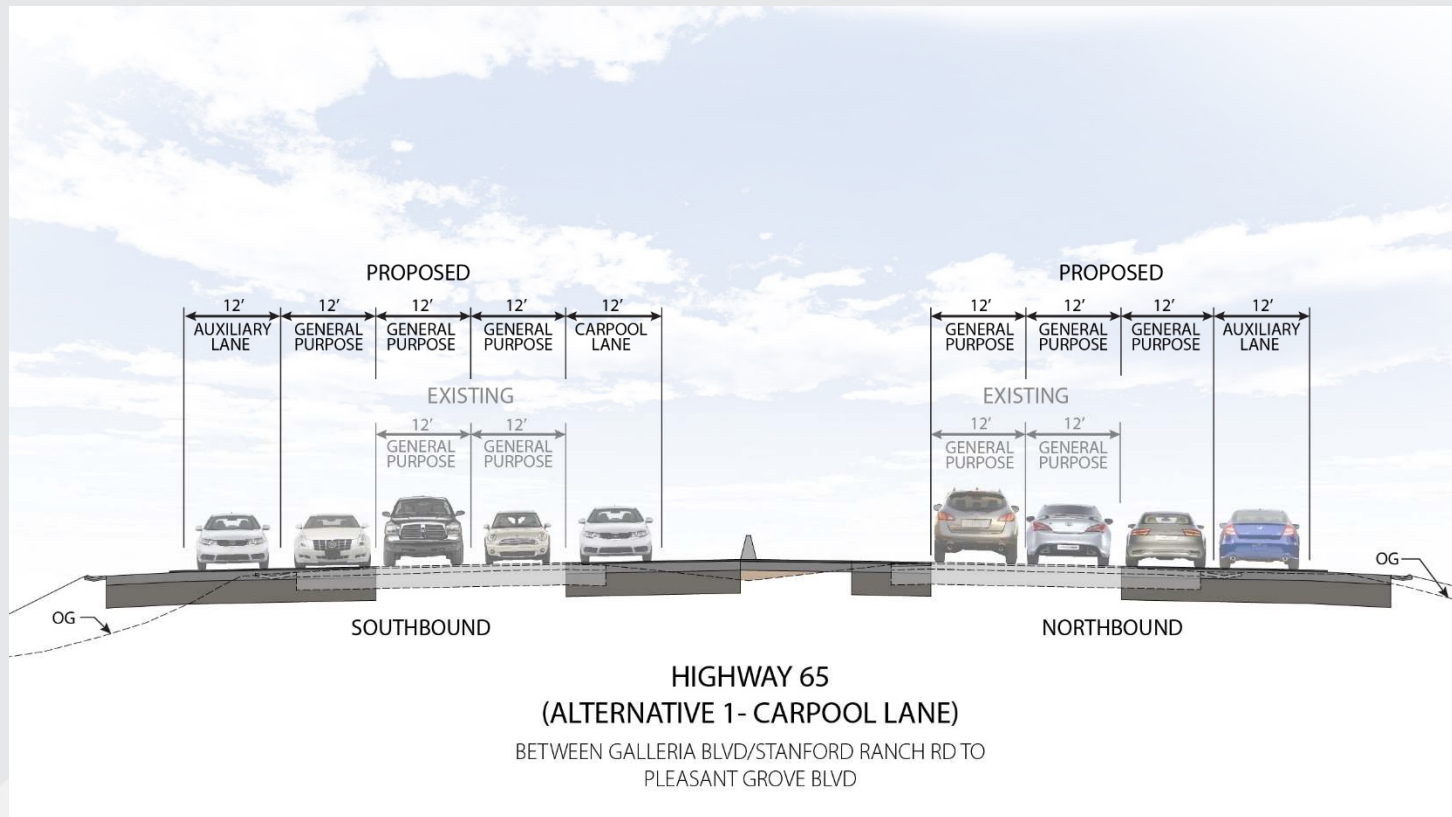
**Response:** Will comply with agency comments



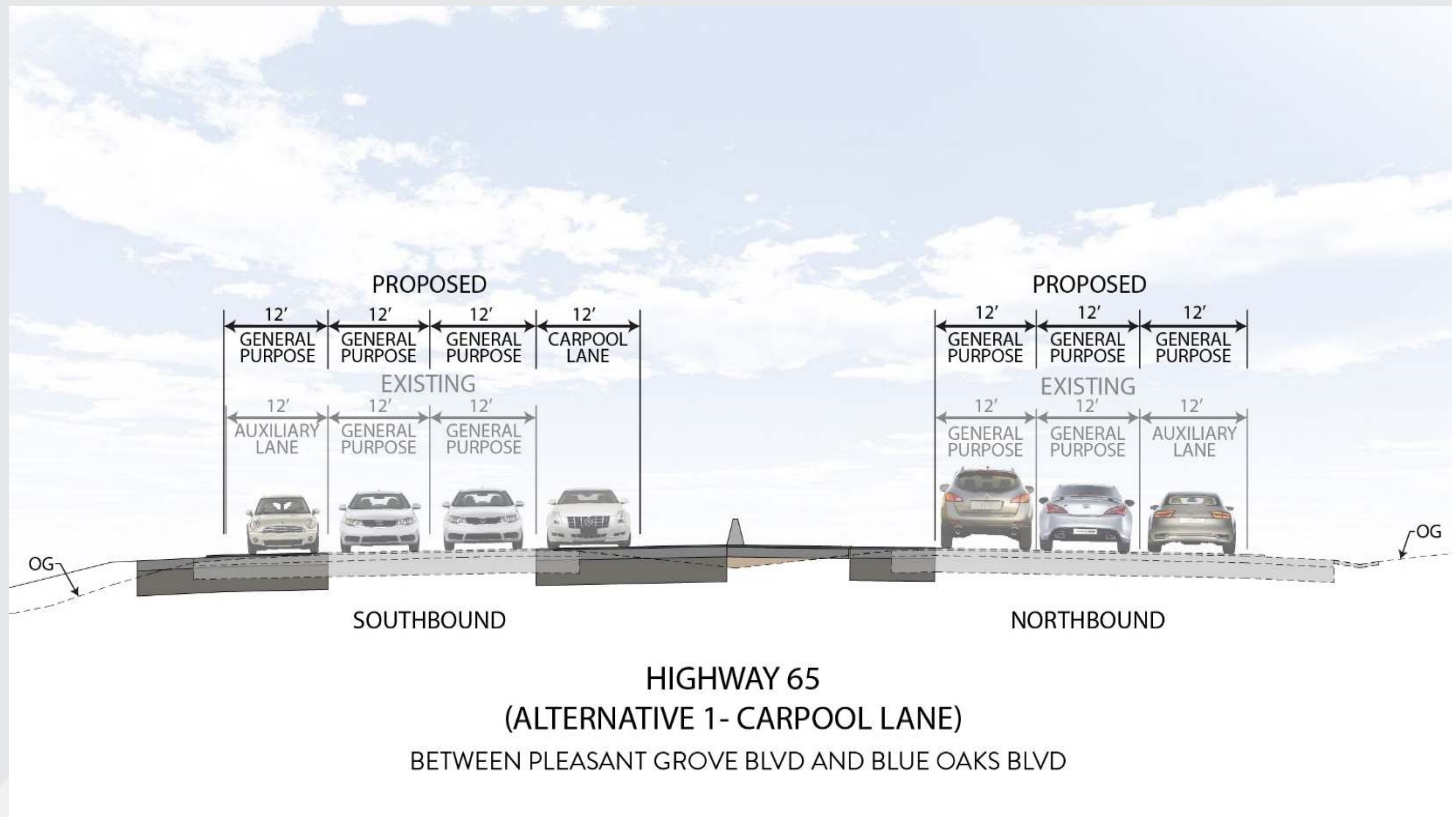
# Proposed Improvements – Alternative 1



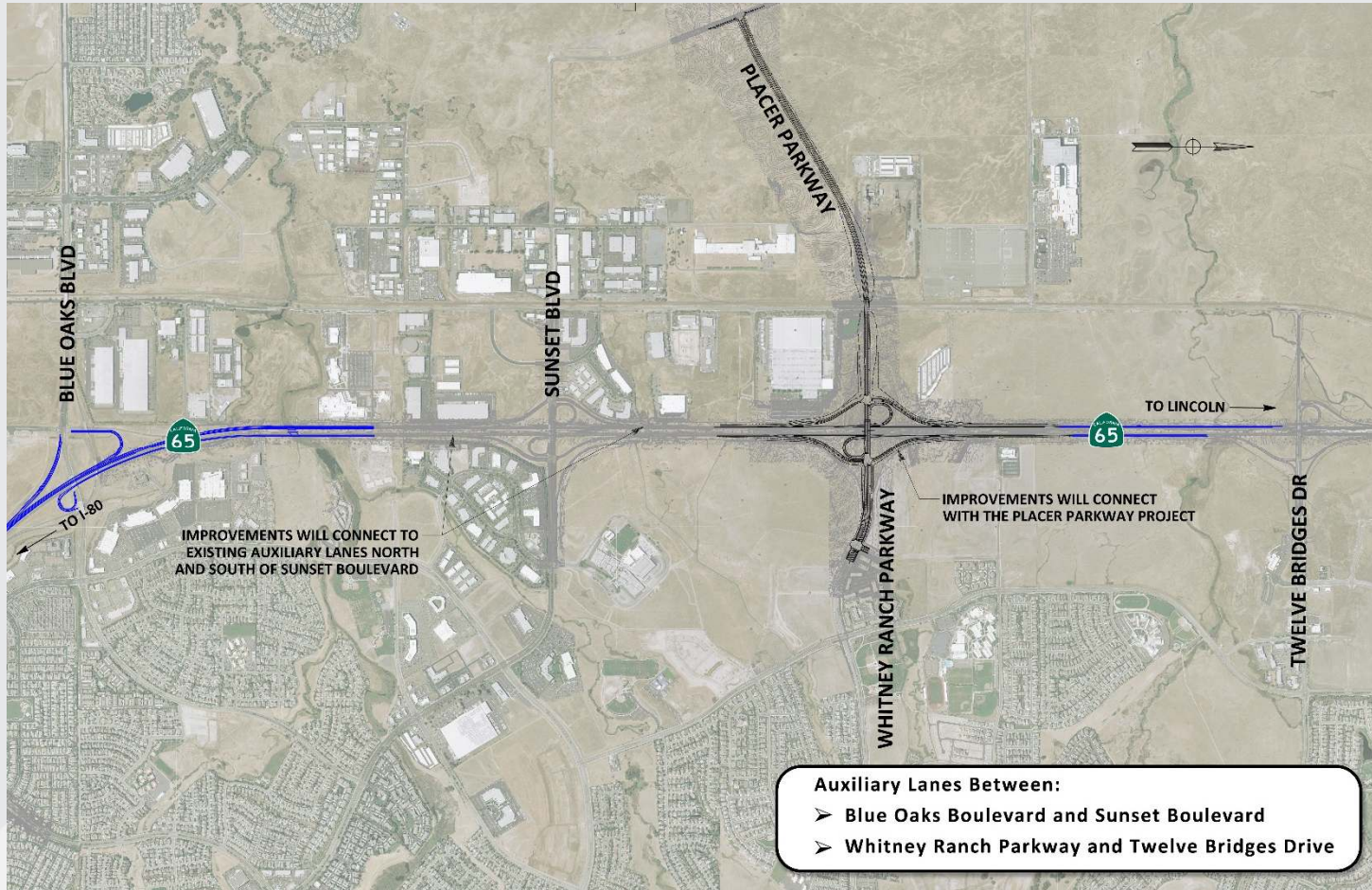
# Proposed Improvements – Alternative 1 (Galleria to Pleasant Grove)



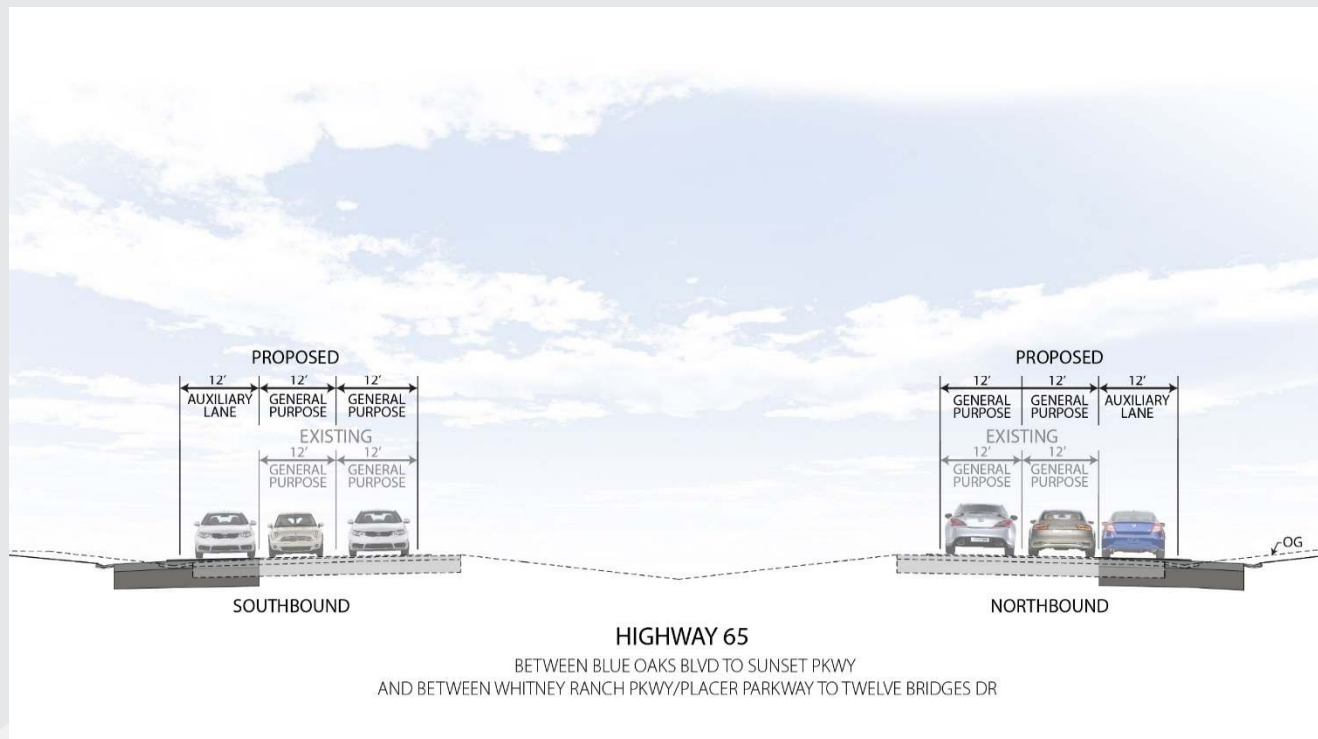
# Proposed Improvements – Alternative 1 (Pleasant Grove to Blue Oaks)



# Proposed Improvements – Alternative 1



# Proposed Improvements – Alternative 1 (Blue Oaks to Lincoln Boulevard)





# Alternatives Comparison

**Alternative 1** – Carpool Lane

**Alternative 2** – General Purpose Lane

**Alternative 3** – No Build



# Alternatives Comparison

Comparison		No Build	Alternative 1	Alternative 2
Air Quality Conformity		N/A	Yes	No
Right of Way		N/A	No Take	No Take
Vehicle Hours of Delay in 2040	AM	6,330	5,540	5,620
	PM	13,380	10,470	10,430
Average Travel Speed in 2040 (mph)	PM	33.6	37.6	37.7
Travel Time in 2040 (min)	SB AM	11.11	7.49	7.53
	NB PM	11.07	7.52	7.53
Existing Traffic Accidents (2009–2012)		124 rear-end, 57 hit-object, 66 other, 3 fatalities		
Traffic Backups on SB Highway 65		7 AM to 7 PM	None	None
Total Project Costs (2015 Dollars)		--	\$ 60M	\$58M

Note: SB = Southbound  
NB = Northbound

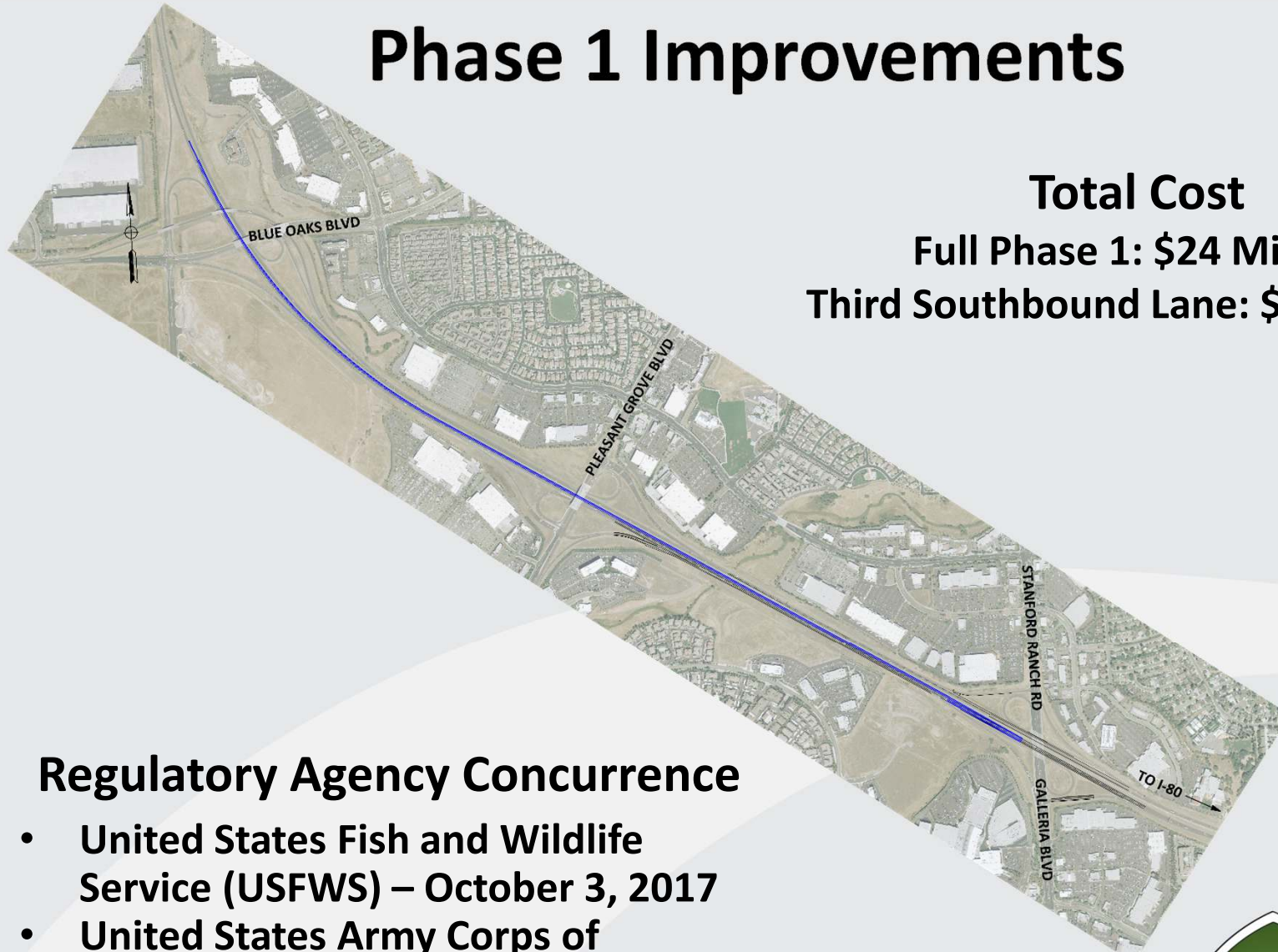


# Next Steps

- State and Federal Environmental Clearance
- Design of Phase 1 Project
- Pursue Funding for Construction of Phase 1



# Phase 1 Improvements



## Total Cost

Full Phase 1: \$24 Million  
Third Southbound Lane: \$11 Million

## Regulatory Agency Concurrence

- United States Fish and Wildlife Service (USFWS) – October 3, 2017
- United States Army Corps of Engineers (USACE) – October 4, 2017



# Questions?

