

TRAVEL TRENDS DURING COVID Through January 2020



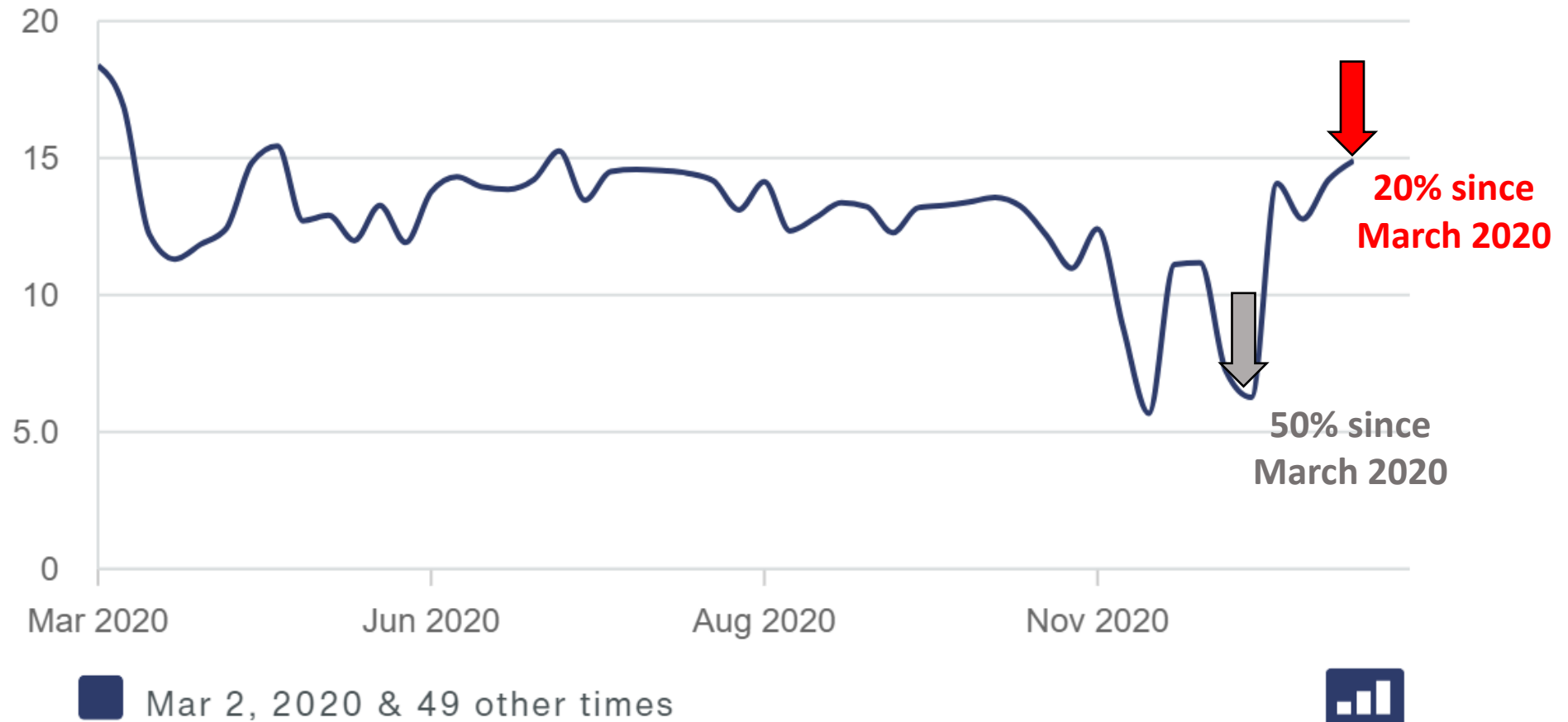
Placer County, CA

Residential Vehicle Miles Traveled (VMTs)

VMT per resident in this geography, average weekday

Week of **Mar 2, 2020** to the week of **Feb 8, 2021**

REPLICA



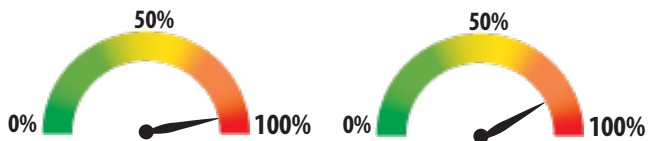
SR 65 Performance Metrics



SR 65 SB Return to Normal

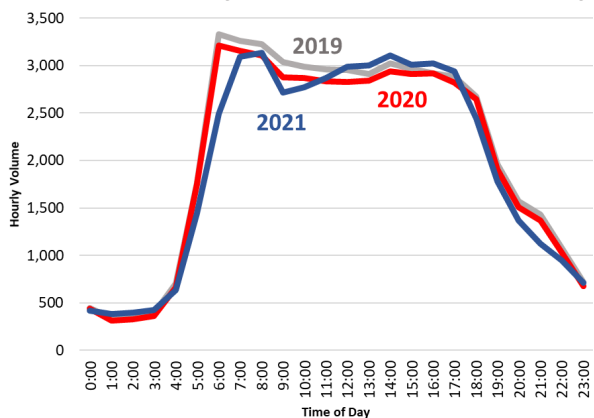
Volume

Speed

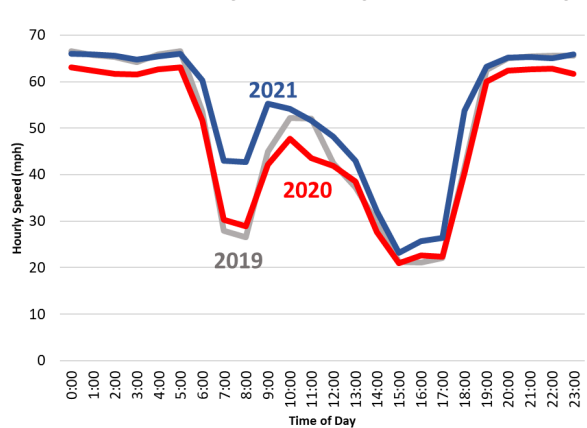


Source: Caltrans PEMS, VDS #314724

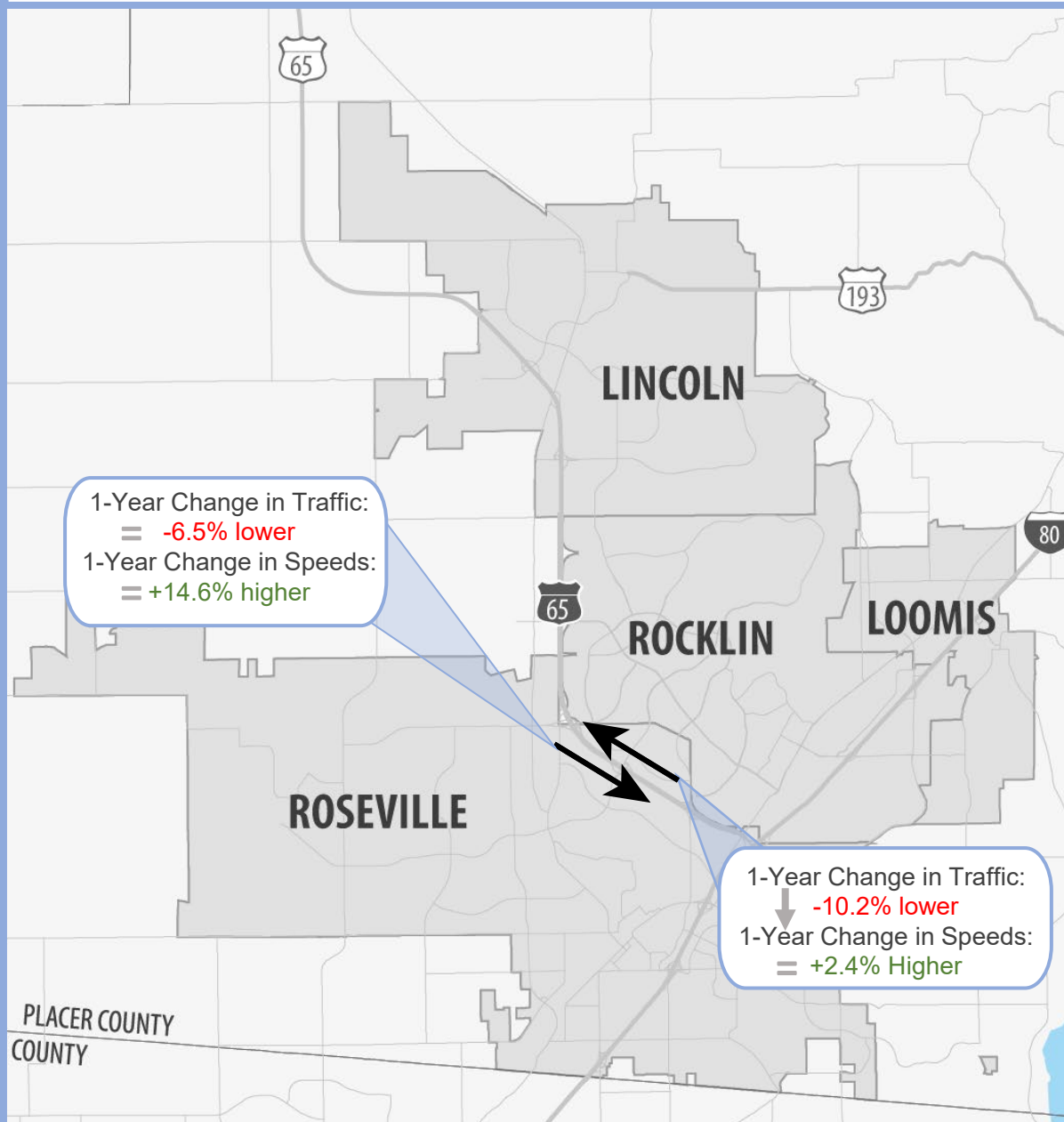
SR 65 SB Hourly Traffic Volumes - January



SR 65 SB Hourly Traffic Speeds - January



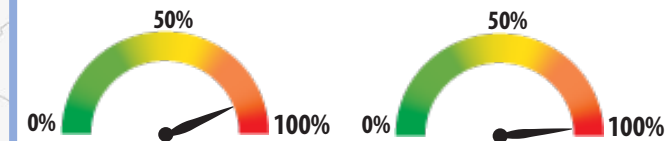
SR 65 Performance Metrics



SR 65 NB Return to Normal

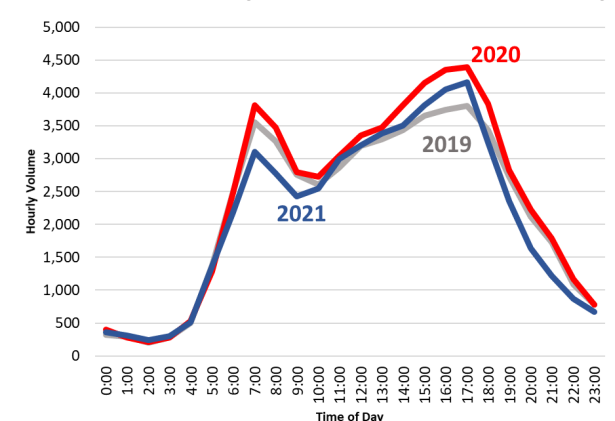
Volume

Speed

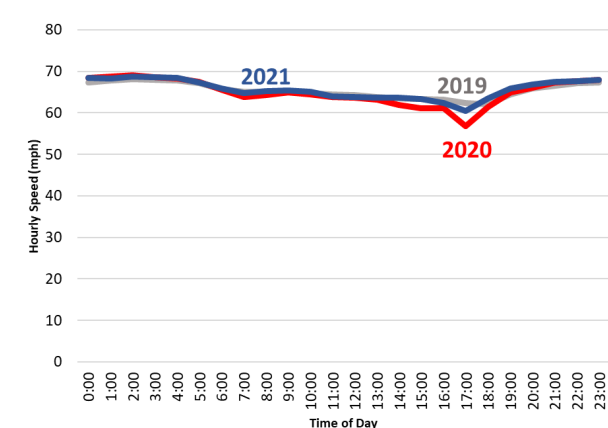


Source: Caltrans PEMS, VDS #316593

SR 65 NB Hourly Traffic Volumes - January



SR 65 NB Hourly Traffic Speeds - January

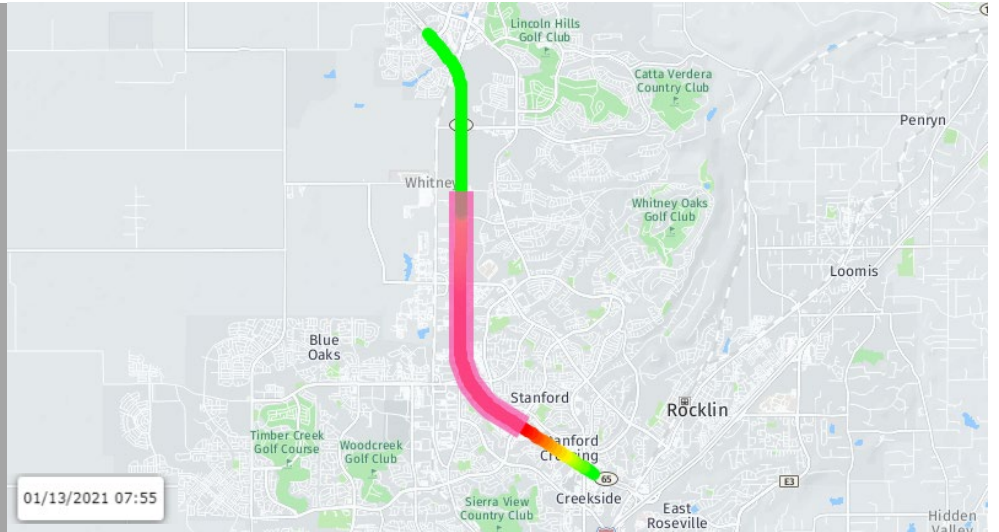
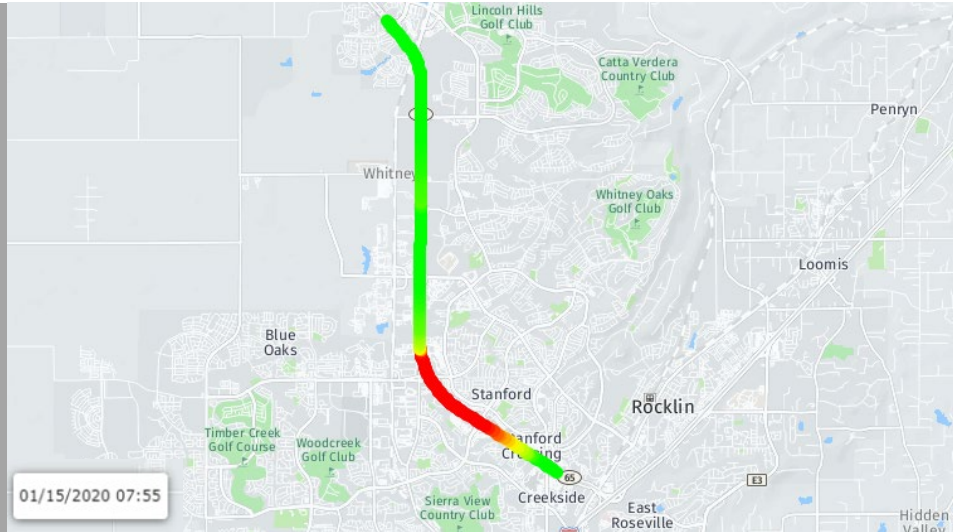


SR 65 SB Corridor Congestion Comparison

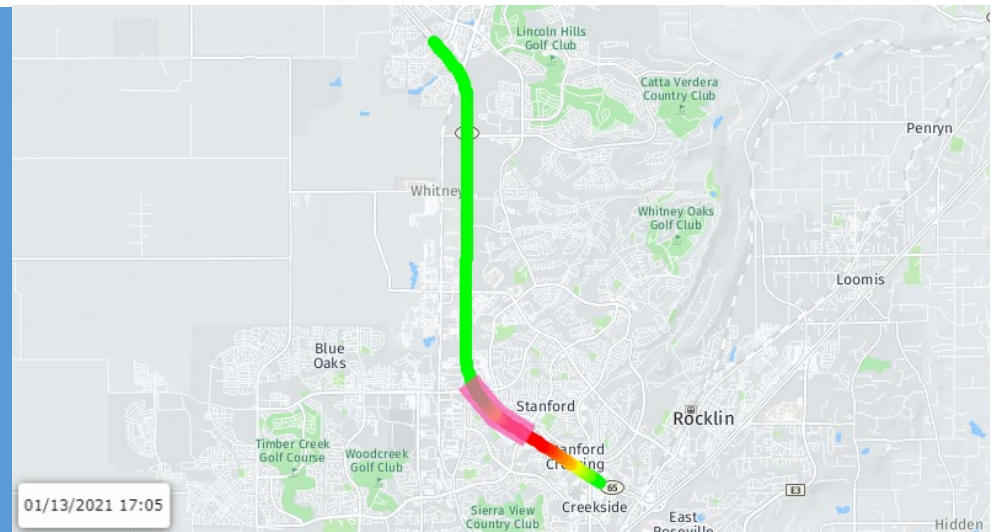
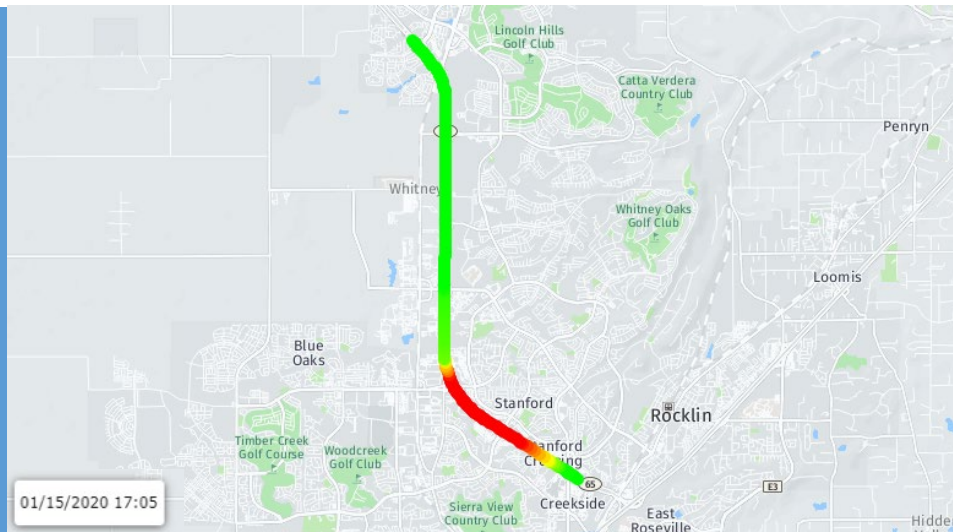
January 2020

January 2021

AM
Commute



PM
Commute



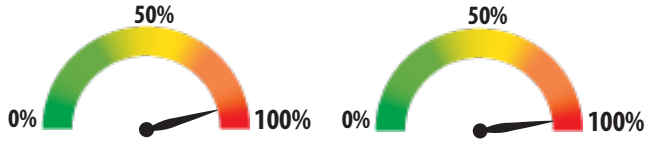
I-80 Performance Metrics



I-80 WB Return to Normal

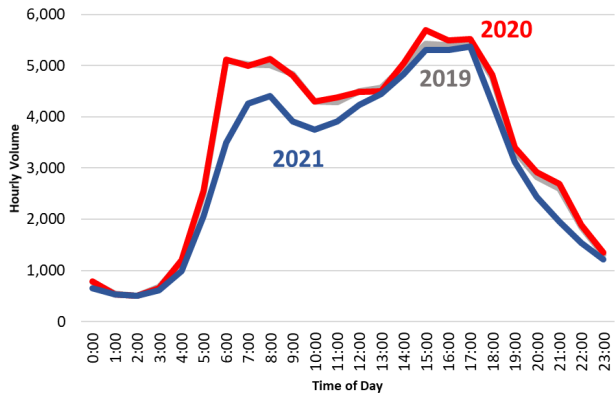
Volume

Speed

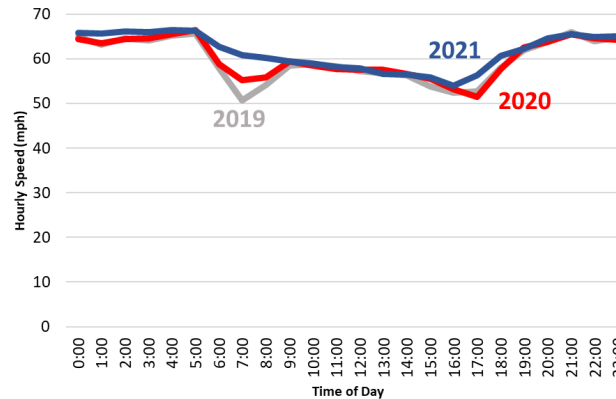


Source: Caltrans PEMS, VDS #318612

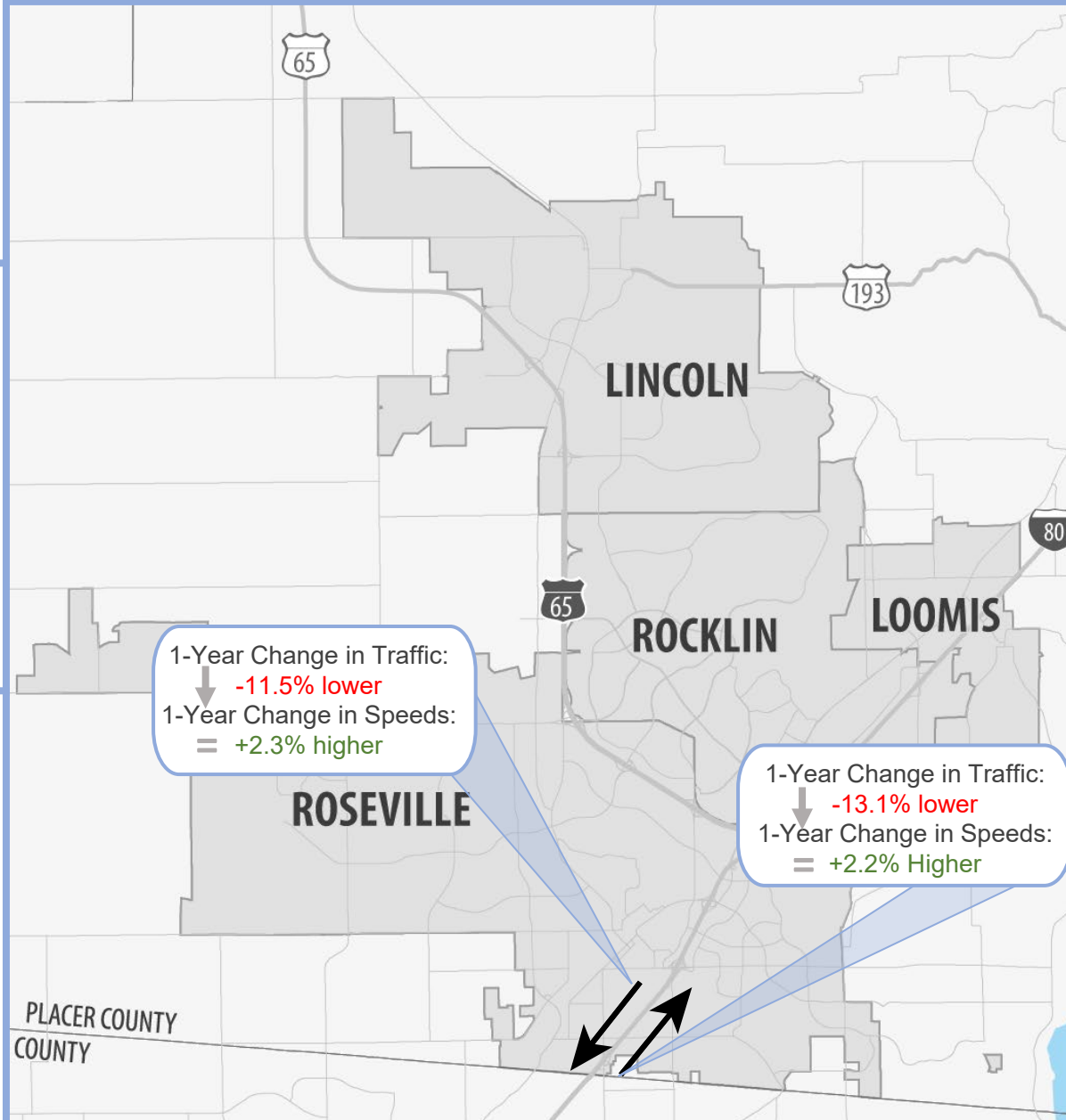
I-80 WB Hourly Traffic Volumes - January



I-80 WB Hourly Traffic Speeds - January



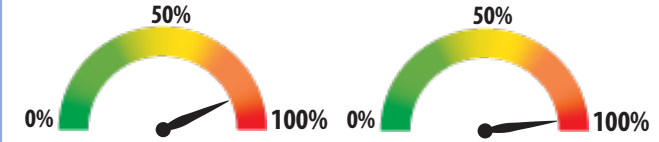
I-80 Performance Metrics



I-80 EB Return to Normal

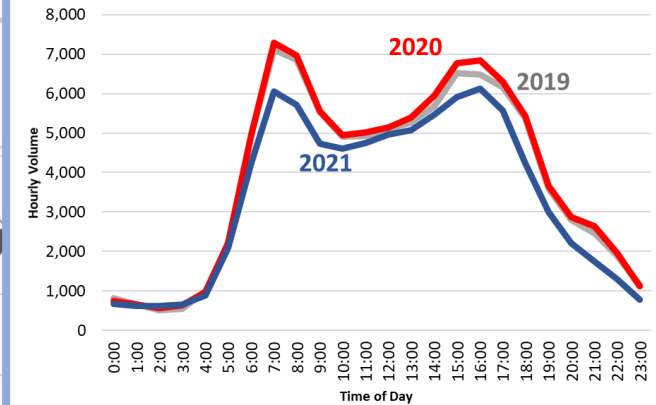
Volume

Speed

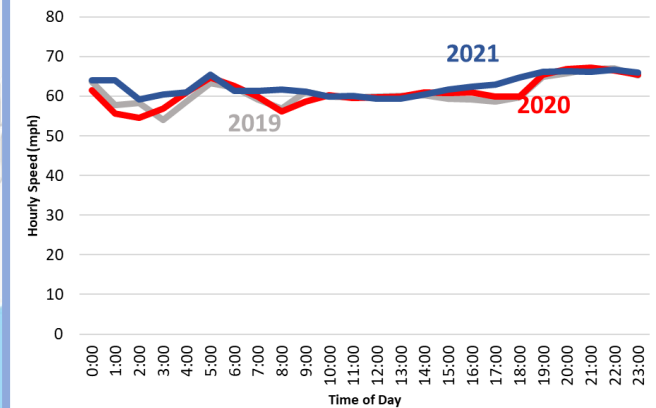


Source: Caltrans PEMS, VDS #318620

I-80 EB Hourly Traffic Volumes - January



I-80 EB Hourly Traffic Speeds - January

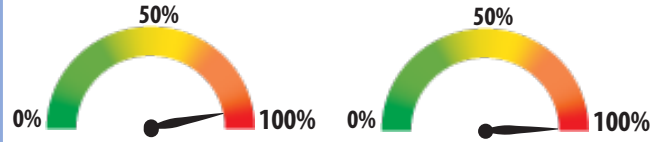


I-80 Performance Metrics

I-80 WB Return to Normal

Volume

Speed

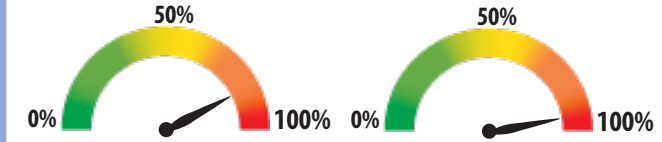


Source: Caltrans PEMS, VDS #317003

I80 EB Return to Normal

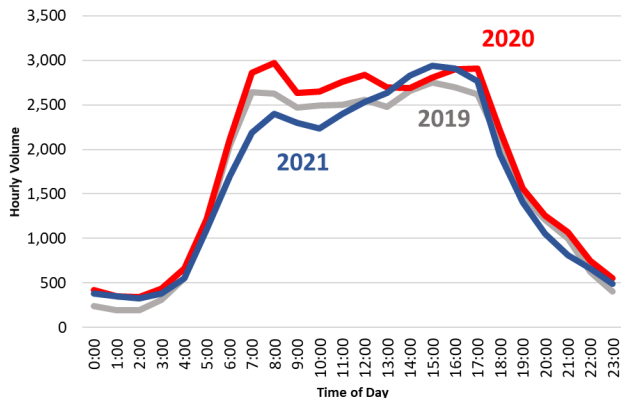
Volume

Speed

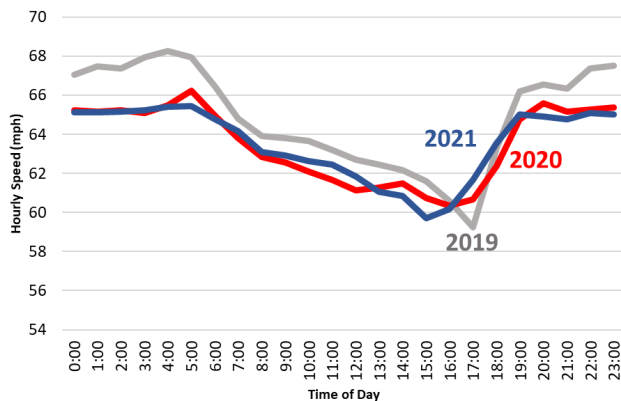


Source: Caltrans PEMS, VDS #317002

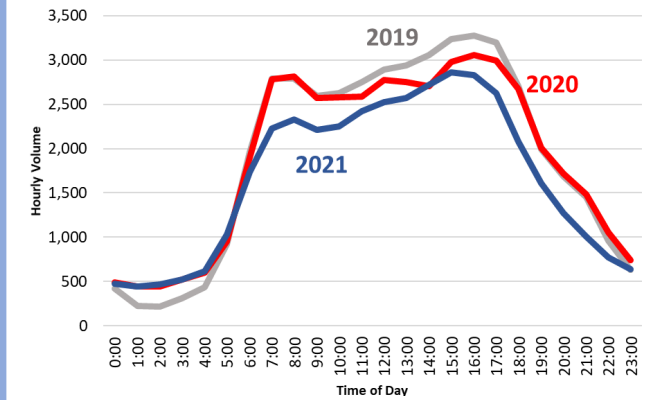
I-80 WB Hourly Traffic Volumes - January



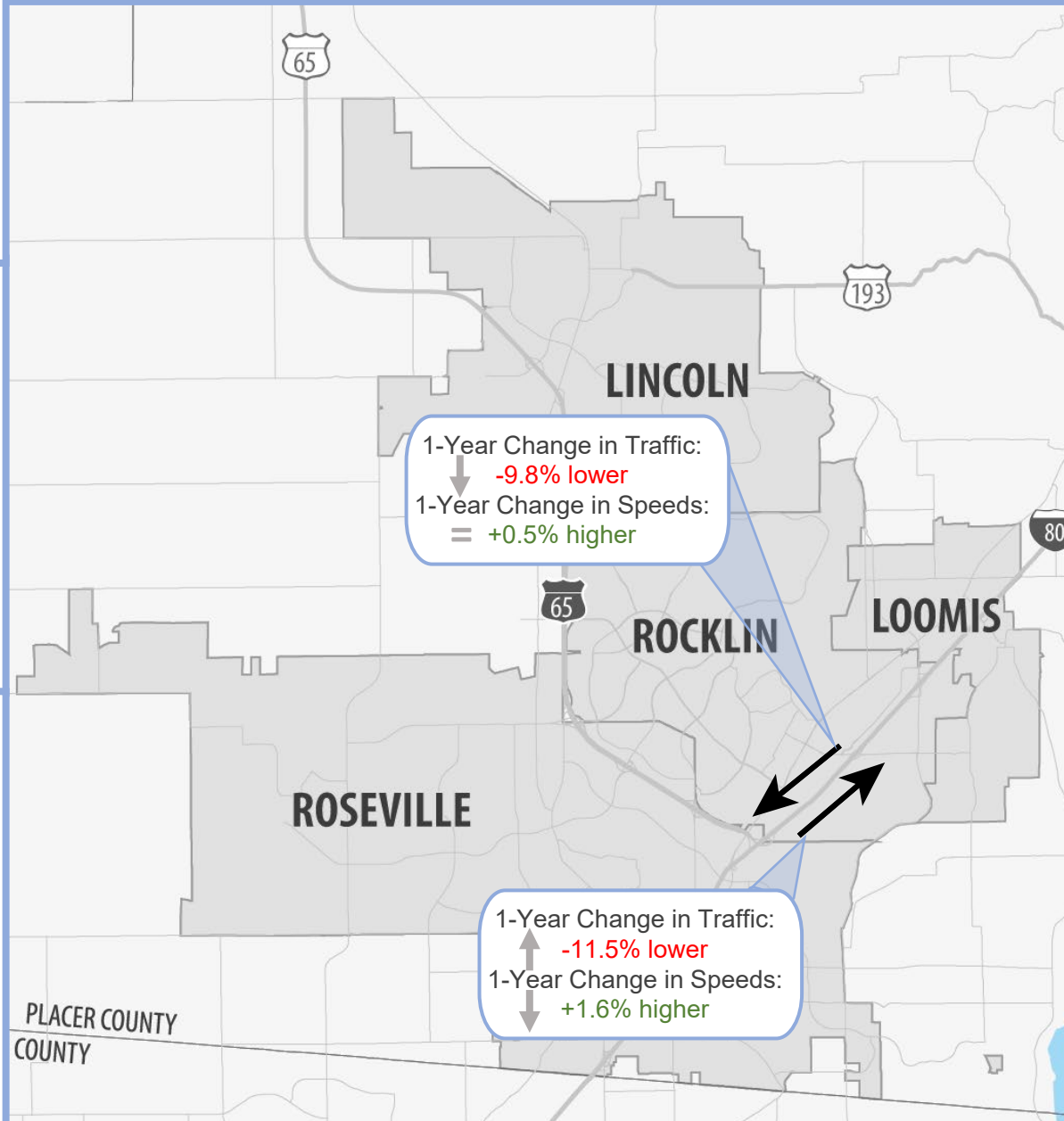
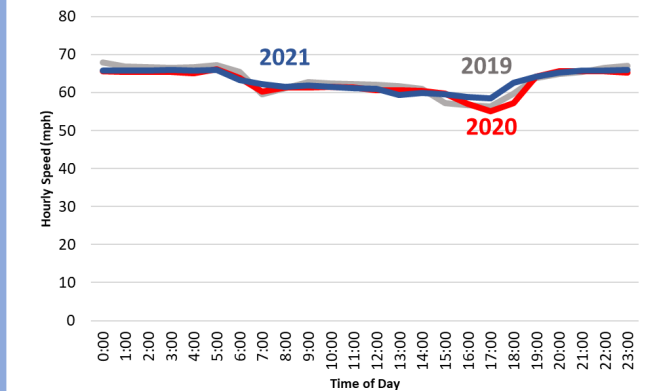
I-80 WB Hourly Traffic Speeds - January



I-80 EB Hourly Traffic Volumes - January



I-80 EB Hourly Traffic Speeds - January

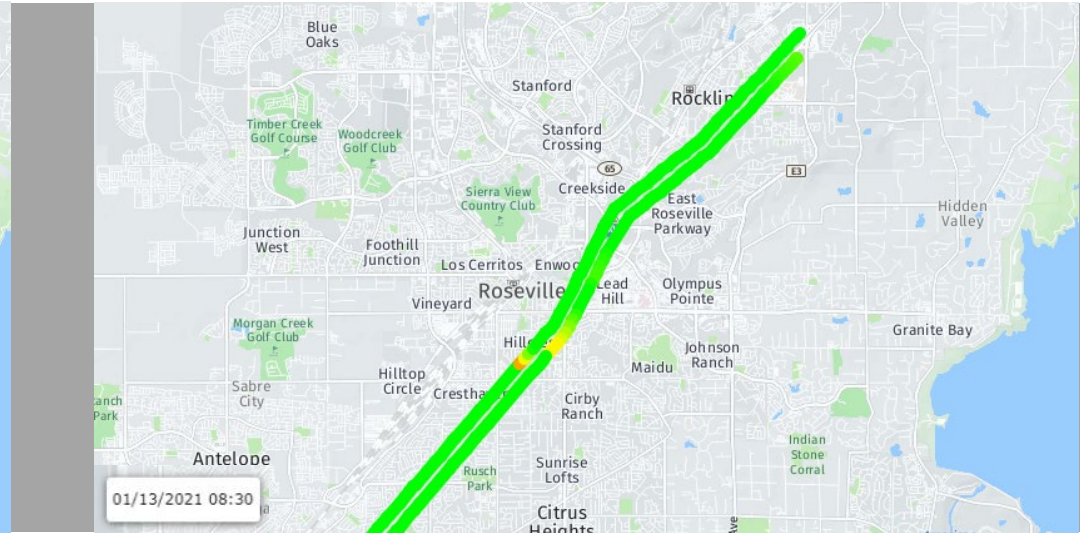
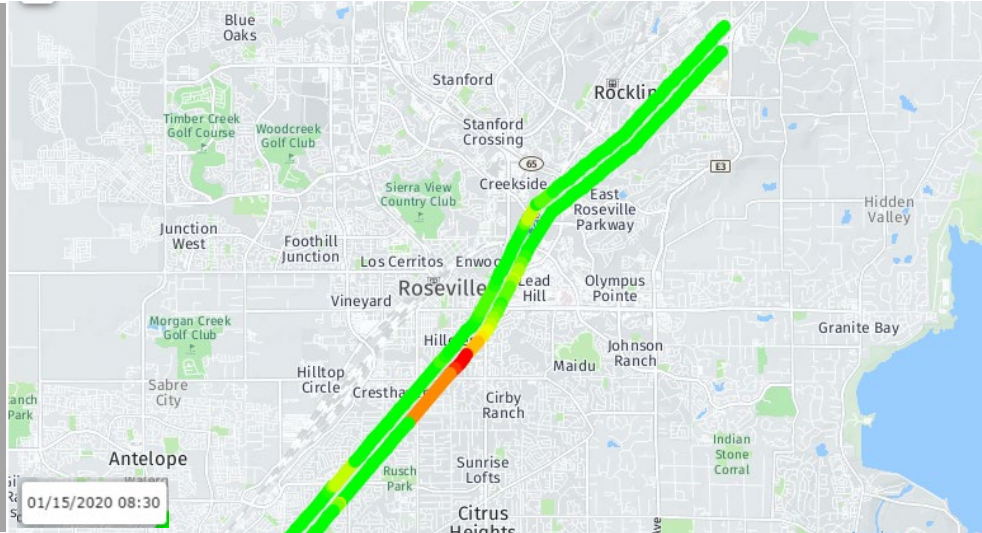


I-80 Corridor Congestion Comparison

January 2020

January 2021

AM
Commute



PM
Commute

