

PCTPA 2050

Regional Transportation Plan

Item K



2050 Regional Transportation Plan Kick-off

Item K

February 23, 2022

Overview – What is the RTP



- 20- year plan
- Updated every 5 years
- Outlines
 - Goals, policies, objectives for funding and projects
- Responds to near-term change
- Connects many planning efforts

OVERVIEW

RTP vs.
MTP/SCS

Look Back at
the 2040 RTP

2050 RTP
Work Plan



Placer County
Transportation
Planning Agency

Overview – How is it Developed

Local Agency Project Lists & Growth Patterns

- Submit transportation projects
- Provide input on development trends

Public Outreach

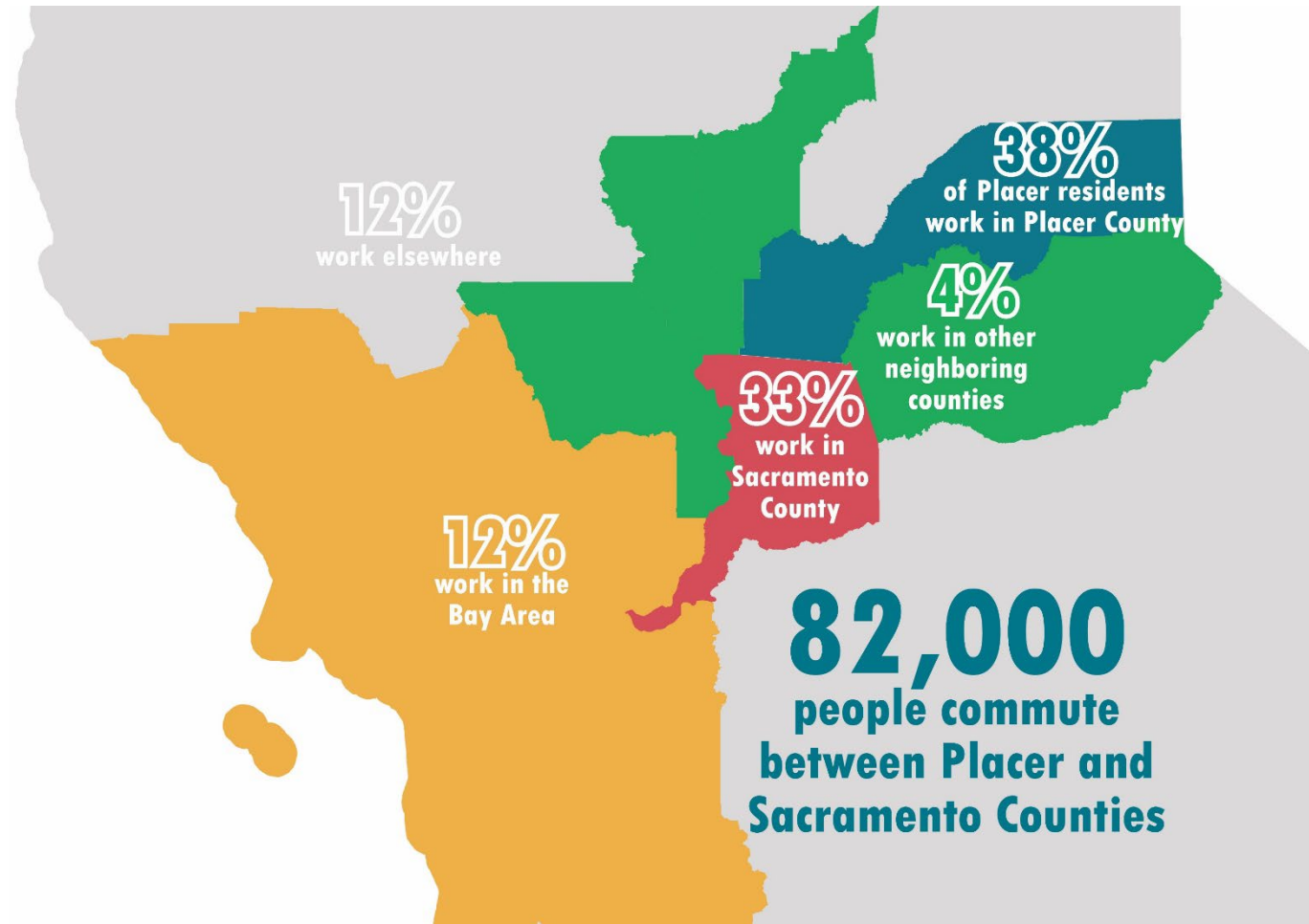
- Weigh in on funding categories (maintenance, congestion, transit, etc.)
- Affirm long-standing regional priority projects

Board Direction

- Craft policies
- Support project lists
- Adopt the plan and environmental impact report

RTP vs. MTP/SCS

- 2/3 of residents commute to locations outside the county
- Transportation needs require broader coordination
- SACOG's MTP provides federal air quality and programming requirements



OVERVIEW

RTP vs.
MTP/SCS

Look Back at
the 2040 RTP

2050 RTP
Work Plan



Placer County
Transportation
Planning Agency

RTP vs. MTP/SCS

RTP & MTP Similarities

- 20-Year Plan
- Policy Statements
- Near & Long Term Projects
- Population, Jobs, Household Forecasts
- Reasonably Foreseeable Revenue
- Financially Constrained Project List

MTP/SCS Differences:

- Multi-County Plan
- Land Use Type & Pattern
- Federal Clean Air Act
- SB 375 Sustainable Communities Strategy

OVERVIEW

RTP vs.
MTP/SCS

Look Back at
the 2040 RTP

2050 RTP
Work Plan



Placer County
Transportation
Planning Agency

RTP vs. MTP/SCS – The Plans Are Not...

- Usurp of local land use control
- General Plan buildout land use allocation
- Designation of specific funding sources
- Evaluation of air quality impacts from land uses or freight

OVERVIEW

RTP vs.
MTP/SCS

Look Back at
the 2040 RTP

2050 RTP
Work Plan



Placer County
Transportation
Planning Agency

Look Back at the Last RTP (2040) - Growth

Projected Growth (2016-2040)

- Placer County
 - 54,160 new homes
 - 141,187 more residents
 - 61,520 more employees
- Six County Region
 - 260,000 new homes
 - 600,000 more residents
 - 270,000 more employees



OVERVIEW

RTP vs.
MTP/SCS

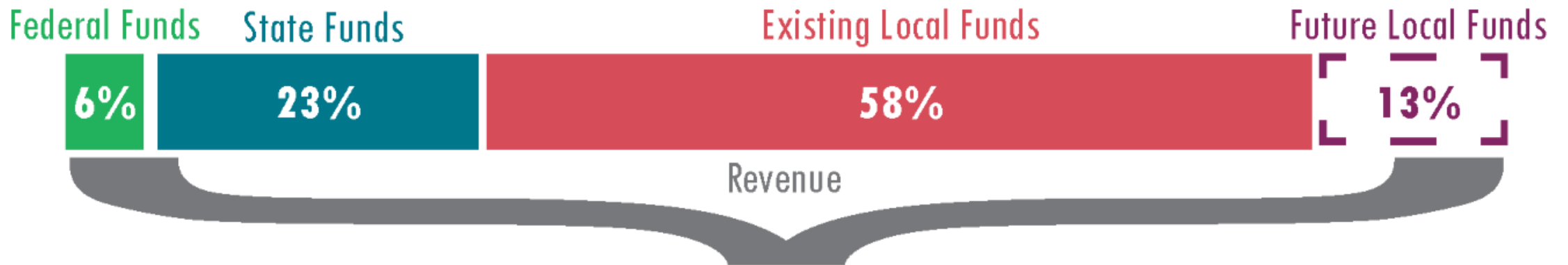
Look Back at
the 2040 RTP

2050 RTP
Work Plan



Placer County
Transportation
Planning Agency

Look Back at the Last RTP (2040) - Revenues



RTP Total: \$6.9 billion

OVERVIEW

RTP vs.
MTP/SCS

Look Back at
the 2040 RTP

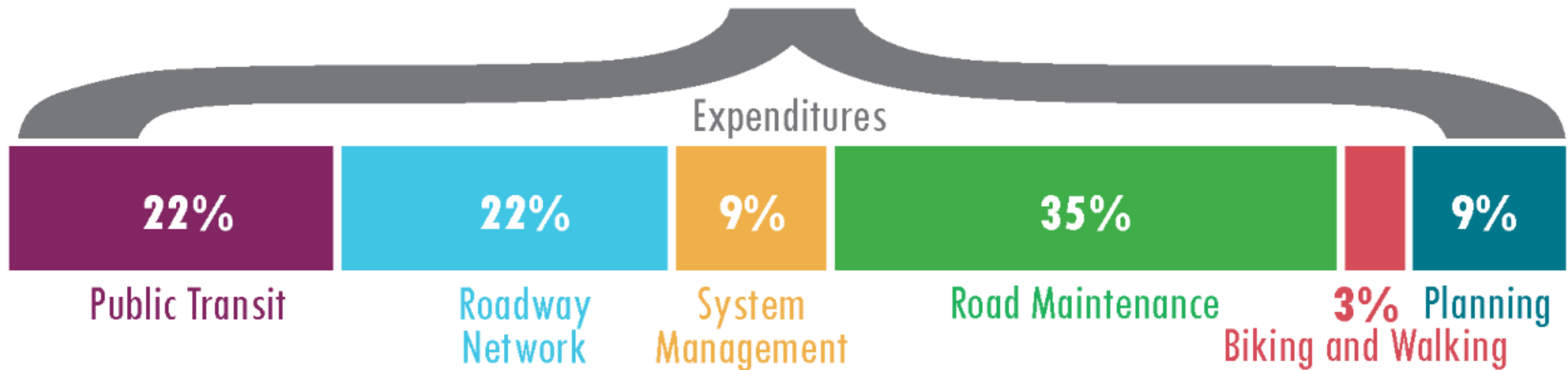
2050 RTP
Work Plan



Placer County
Transportation
Planning Agency

Look Back at the Last RTP (2040) - Expenditures

RTP Total: \$6.9 billion



OVERVIEW

RTP vs.
MTP/SCS

Look Back at
the 2040 RTP

2050 RTP
Work Plan

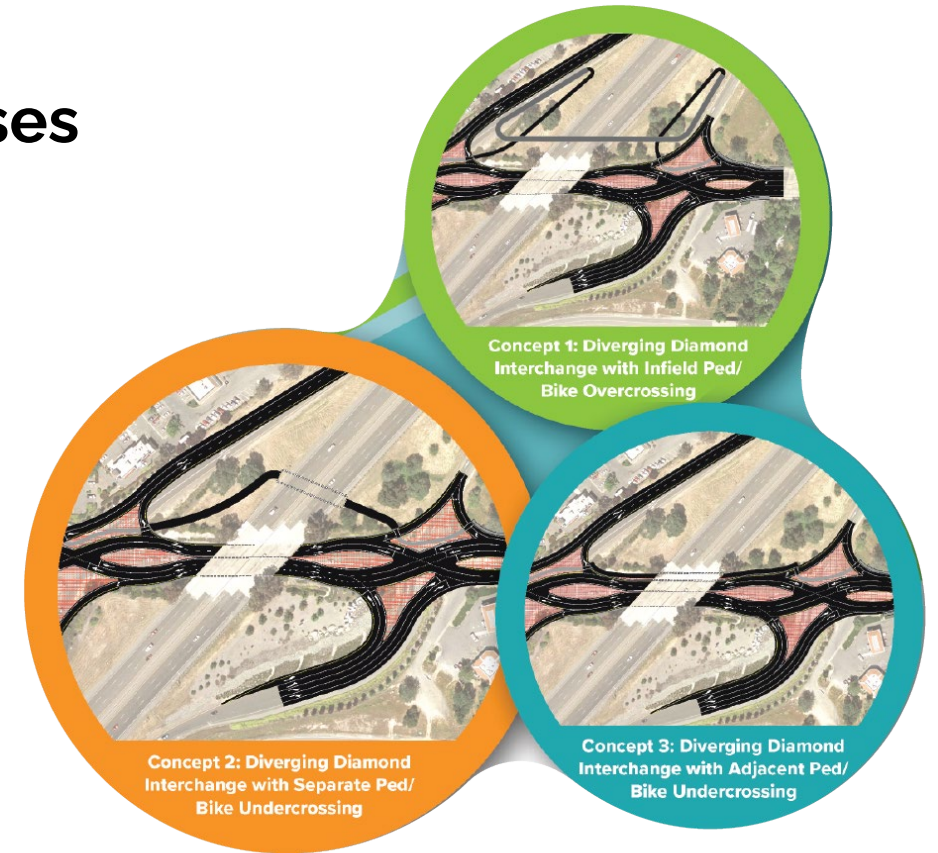


Placer County
Transportation
Planning Agency

Look Back at the Last RTP (2040) - Projects

Projects Progressing Through Delivery Phases

- South Placer Transit Project
- Baseline Rd/Riego Road Widening
- East Joiner Parkway Widening
- Bell Road / I-80 Roundabouts



Rocklin Rd Interchange

OVERVIEW

RTP vs.
MTP/SCS

Look Back at
the 2040 RTP

2050 RTP
Work Plan



Placer County
Transportation
Planning Agency

Look Back at the Last RTP (2040) - Projects

Completed

- I-80 / SR65 Interchange Phase 1
- Blue Oaks Blvd Extension
- Nevada Street Sidewalks Project
- Loomis Town Center Implementation



OVERVIEW

RTP vs.
MTP/SCS

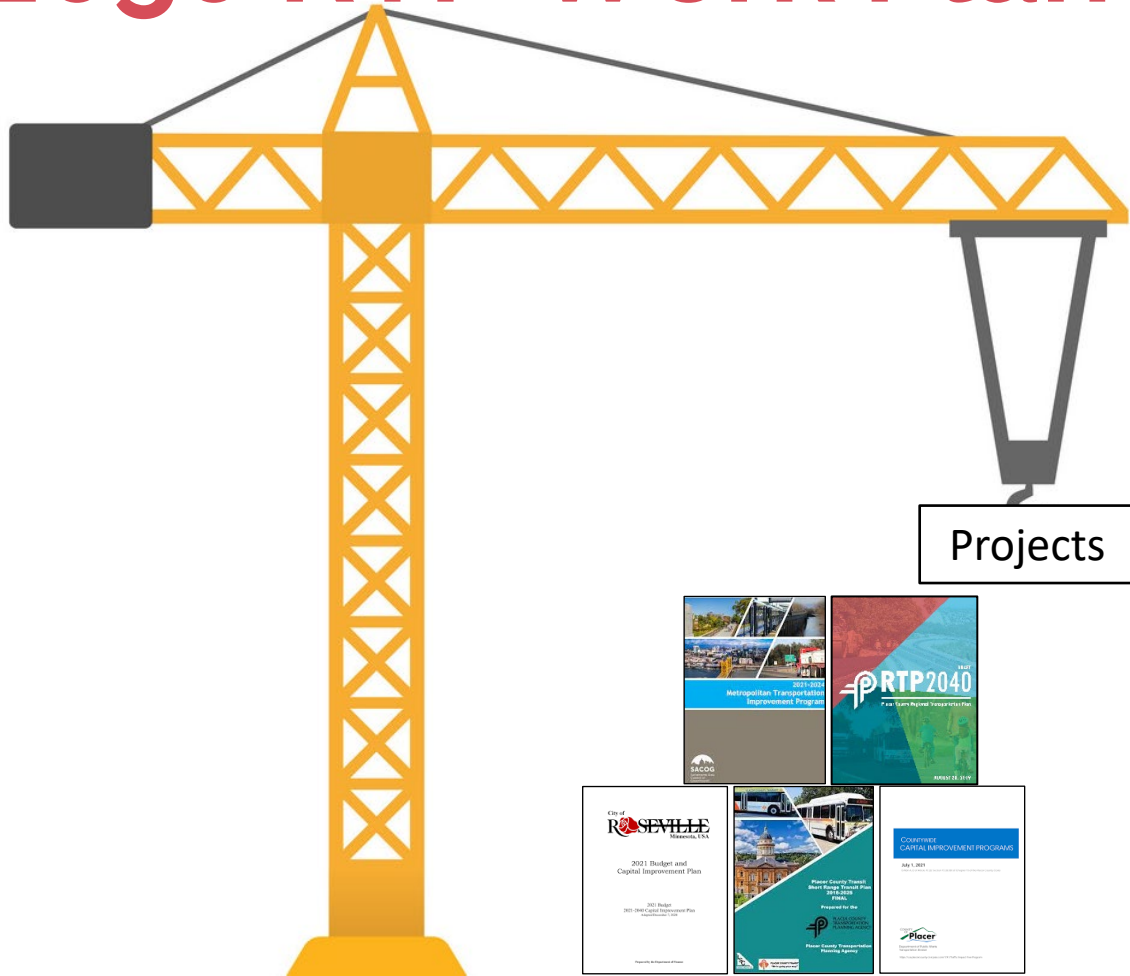
Look Back at
the 2040 RTP

2050 RTP
Work Plan



Placer County
Transportation
Planning Agency

2050 RTP Work Plan – Project Considerations



- Project Lists from last adopted RTP (2040) will be updated based on:
 - Revised cost estimates
 - New project phases
 - Adding new projects from changing local priorities
 - Any additional local agency transportation planning information

OVERVIEW

RTP vs.
MTP/SCS

Look Back at
the 2040 RTP

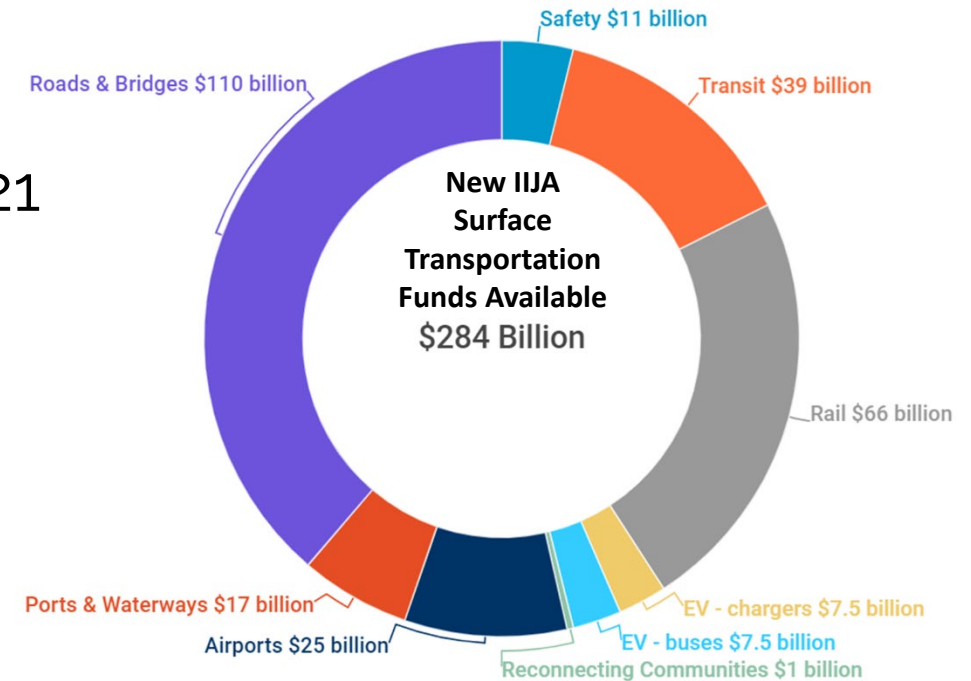
2050 RTP
Work Plan



Placer County
Transportation
Planning Agency

2050 RTP Work Plan – Revenue Assumptions

- Many similar federal, state, and local funding programs
- Infrastructure Investment and Jobs Act (IIJA) - 2021
 - 30% more funding compared to FAST Act
 - New funding discretionary and competitive funding
- Funding Strategy revenues considered



OVERVIEW

RTP vs.
MTP/SCS

Look Back at
the 2040 RTP

2050 RTP
Work Plan



Placer County
Transportation
Planning Agency

2050 RTP Work Plan – Principle Themes

Draft Principle Themes for 2050 RTP

1. Enhance regional economic vitality and transportation connectivity to support continued growth and all development types (2040: 3, 5 & 6)
2. Maintain a safe, secure, and efficient transportation network (2040: 1)
3. Provide multi-modal and accessible transportation infrastructure and services that benefit all populations (2040: 2 & 3)
4. Incorporate technology and make investments that support a resilient, adaptable, and sustainable transportation system that enhances the region's environment (2040: 1, 4 & 5)



Previous 2040 RTP Principle Themes

1. Fit within a financially constrained budget by delivering cost-effective projects that are feasible to construct and maintain
2. Provide real, viable travel choices for all people within a diverse county
3. Improve access and mobility opportunities for all people to jobs, services and housing
4. Improve environmental quality through better stewardship of the transportation system
5. Improve economic vitality by efficiently connecting people to jobs and delivering goods and services to markets
6. Support well-planned growth and land use patterns



OVERVIEW

RTP vs.
MTP/SCS

Look Back at
the 2040 RTP

2050 RTP
Work Plan



Placer County
Transportation
Planning Agency

2050 Work Plan – Performance Metrics

- Consider quantitative performance metrics that measure policy implementation
- Example:
 - Policy: Improve the ability of people and goods to move between desired locations, and provide a variety of modal and mobility options

Performance metrics considered for evaluation:

- Total new local roadway lane miles
- New project vehicle miles traveled (VMT)
- Average commute travel time
- Percent of population within ½ mile access to transit stop
- Percentage of ped/bike modal share in transportation network

OVERVIEW

RTP vs.
MTP/SCS

Look Back at
the 2040 RTP

2050 RTP
Work Plan



Placer County
Transportation
Planning Agency

2050 Work Plan – Consideration Issues



CAPTI
Climate Action Plan for
Transportation Infrastructure



- Climate Action Plan for Transportation Infrastructure (CAPTI) – 2021
 - Climate change adaptation
 - Project benefits tied with health, safety, and equity
- SB 743 – VMT Analysis
- Attaining GHG Reduction Targets 19% per capita

OVERVIEW

RTP vs.
MTP/SCS

Look Back at
the 2040 RTP


2050 RTP
Work Plan



Placer County
Transportation
Planning Agency

2050 RTP Work Plan – Schedule

2022

- Winter/Spring
 - Kick-off meeting
 - Coordinate with SACOG on Call for Projects
 - Begin designing RTP elements and public outreach plan
- Summer/Fall
 - Begin developing RTP goals, policies, and performance measures
 - Draft project lists developed
 - Background/demographic data collection for RTP elements
- Fall/Winter  **PCTPA Board Check-in**
 - Develop financial assumptions and performance data
 - SACOG MTP/SCS scenario development
 - Draft RTP policy element
 - Public outreach

OVERVIEW

RTP vs.
MTP/SCS

Look Back at
the 2040 RTP



2050 RTP
Work Plan



Placer County
Transportation
Planning Agency

2050 RTP Work Plan – Schedule

2023

- Winter/Spring
 - Draft RTP action element
 - On-going MTP/SCS scenario development
 - Public Outreach
- Summer/Fall  **PCTPA Board Check-in**
 - SACOG preferred MTP/SCS scenario developed
 - Draft RTP financial element
 - Final project lists and financial constraints developed
- Fall/Winter  **PCTPA Board Check-in**
 - Begin final draft RTP document and complete RTP elements
 - Draft RTP EIR document
 - Public outreach
 - SACOG adopts MTP/SCS in December 2023

OVERVIEW

RTP vs.
MTP/SCS

Look Back at
the 2040 RTP


2050 RTP
Work Plan



Placer County
Transportation
Planning Agency

2050 RTP Work Plan – Schedule

2024

- Winter/Spring
 - Finalize development of draft RTP EIR
 - Public Outreach
- Summer/Fall  **PCTPA Board Check-in**
 - Release draft RTP and EIR documents for public comment
 - Public Outreach
- Fall/Winter
 - Review and address public comments received
 - **Adopt PCTPA 2050 RTP and accompanying EIR in December 2024**

OVERVIEW

RTP vs.
MTP/SCS

Look Back at
the 2040 RTP

2050 RTP
Work Plan



Placer County
Transportation
Planning Agency

Questions?

OVERVIEW

RTP vs.
MTP/SCS

Look Back at
the 2040 RTP

2050 RTP
Work Plan



Placer County
Transportation
Planning Agency